



Chipsmall Limited consists of a professional team with an average of over 10 year of expertise in the distribution of electronic components. Based in Hongkong, we have already established firm and mutual-benefit business relationships with customers from,Europe,America and south Asia,supplying obsolete and hard-to-find components to meet their specific needs.

With the principle of “Quality Parts,Customers Priority,Honest Operation,and Considerate Service”,our business mainly focus on the distribution of electronic components. Line cards we deal with include Microchip,ALPS,ROHM,Xilinx,Pulse,ON,Everlight and Freescale. Main products comprise IC,Modules,Potentiometer,IC Socket,Relay,Connector.Our parts cover such applications as commercial,industrial, and automotives areas.

We are looking forward to setting up business relationship with you and hope to provide you with the best service and solution. Let us make a better world for our industry!



## Contact us

Tel: +86-755-8981 8866 Fax: +86-755-8427 6832

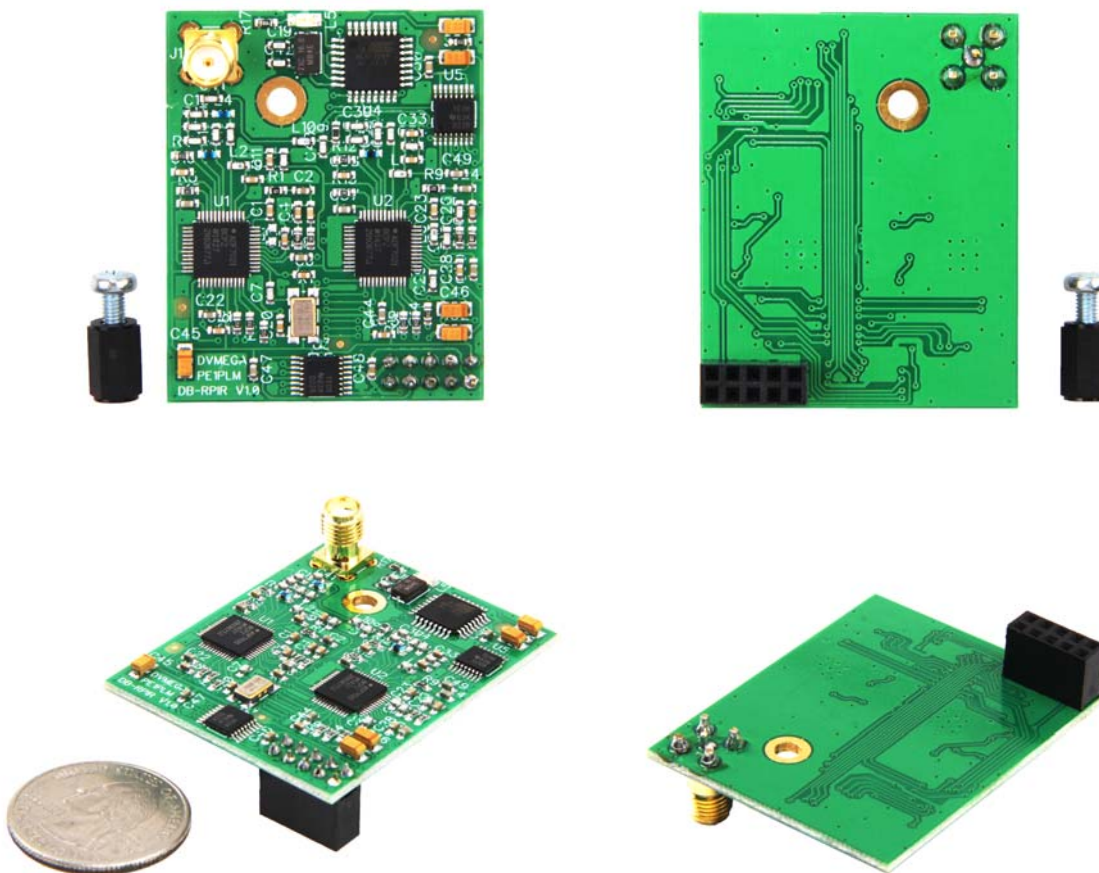
Email & Skype: info@chipsmall.com Web: www.chipsmall.com

Address: A1208, Overseas Decoration Building, #122 Zhenhua RD., Futian, Shenzhen, China



# Raspberry Pi Dual band Radio hotspot

SKU 109990289



## Description

DVMEGA RPI Dual band radio is a radio module that fits without a modem or node adapter directly on the Raspberry Pi. The combination RPI and RPI DVMEGA radio is a complete D-Star compatible hotspot with an output power of 10mW. The DVMEGA RPI radio comes with firmware and is ready for use. There are 2 radio's available, configured to operate in the VHF and UHF band.

## Features

- Fits on Raspberry PI version A and B
- Dual band VHF / UHF radio
- 10 mW output power
- SMA antenna connector [antenna not included]
- Completely assembled
- Ready to use, firmware is pre-loaded

## Supported

- DMR+
- DMR Brand Meister

## Technical Details

Weight	G.W 45g
Battery	Exclude

## Part List

Raspberry Pi Dual band Radio hotspot
--------------------------------------