



Chipsmall Limited consists of a professional team with an average of over 10 year of expertise in the distribution of electronic components. Based in Hongkong, we have already established firm and mutual-benefit business relationships with customers from,Europe,America and south Asia,supplying obsolete and hard-to-find components to meet their specific needs.

With the principle of “Quality Parts,Customers Priority,Honest Operation,and Considerate Service”,our business mainly focus on the distribution of electronic components. Line cards we deal with include Microchip,ALPS,ROHM,Xilinx,Pulse,ON,Everlight and Freescale. Main products comprise IC,Modules,Potentiometer,IC Socket,Relay,Connector.Our parts cover such applications as commercial,industrial, and automotives areas.

We are looking forward to setting up business relationship with you and hope to provide you with the best service and solution. Let us make a better world for our industry!



Contact us

Tel: +86-755-8981 8866 Fax: +86-755-8427 6832

Email & Skype: info@chipsmall.com Web: www.chipsmall.com

Address: A1208, Overseas Decoration Building, #122 Zhenhua RD., Futian, Shenzhen, China





DESERIES

COMPACT IEC CONNECTOR FILTERS



INTRODUCTIONS

1. Designed as a general purpose filter with an IEC connector.
2. Bleeder resistor is added for EG3E, EG3B, EG3R, EW3B, EW3E, EW3R, EG3S numbers with suffix "R".

SPECIFICATIONS

1. Maximum leakage current each line-to-ground @ 115VAC 60Hz: 0.25mA @ 250VAC 50Hz: 0.45mA
2. Hipot rating (one minute) line-to-ground: 2250VDC line-to-line: 1450VDC
3. Operating frequency: 50/60Hz
4. Rated voltage: 115/250VAC

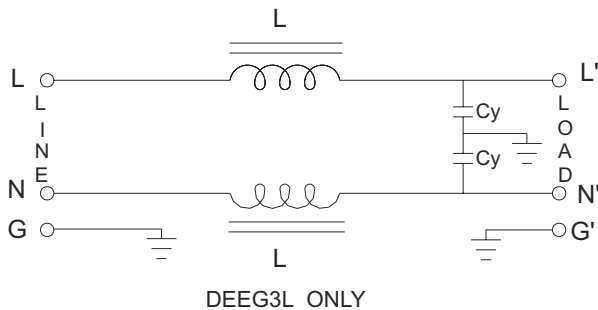
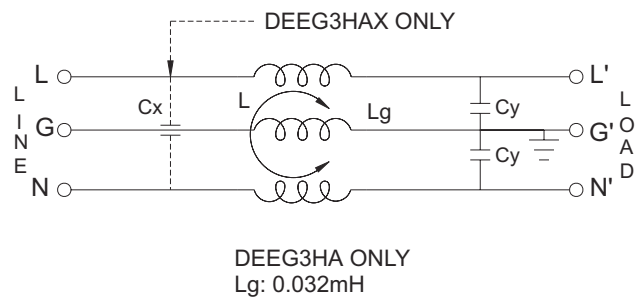
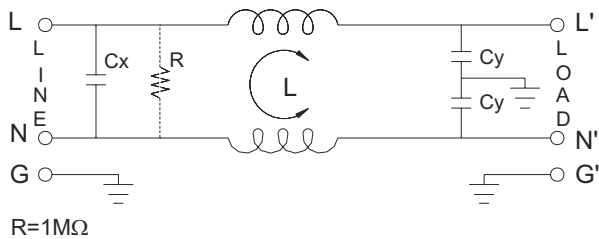
COMPONENTS

PART NO.	Cx (uF)	L (mH)	Cy (pF)
01DEEG3R/-R	0.033	0.26	2200
01DEEW3R/-R		5	
01DEEG3S/-R		5.5	
01DEEG3E/-R	0.015	1.9	3300
01DEEW3E/-R		1.9	
•01DEEG3L	—	0.34	1000
03DEEG3R/-R	0.033	0.18	2200
03DEEW3BS/-R		2.5	
03DEEW3R/-R		1.8	
03DEEG3B/-R		1.8	
03DEEG3S/-R		1.8	
03DEEW3B/-R	0.015	1.1	3300
03DEEG3E/-R		1.1	
03DEEW3E/-R		1.1	
•03DEEG3HA	—	0.032	

PART NO.	Cx (uF)	L (mH)	Cy (pF)
•03DEEG3L	—	0.08	1000
•03DEEG3HAX	0.015	0.032	3300
06DEEG3R/-R	0.033	0.072	2200
06DEEW3R/-R		0.5	
06DEEG3S/-R		0.6	
06DEEG3B/-R	0.015	0.55	3300
06DEEW3B/-R		0.55	
06DEEG3E/-R	—	0.032	3300
06DEEW3E/-R		0.016	1000
*06DEEG3HA	0.033	0.18	2200
•06DEEG3L		0.18	
10DEEG3B/-R		0.18	
10DEEG3S/-R		0.18	
10DEEW3B/-R		0.018	
10DEEW3R/-R	0.018		
10DEEG3R/-R			

- * UL & CSA approved only
- UL, CSA & VDE approved

ELECTRICAL SCHEMATIC

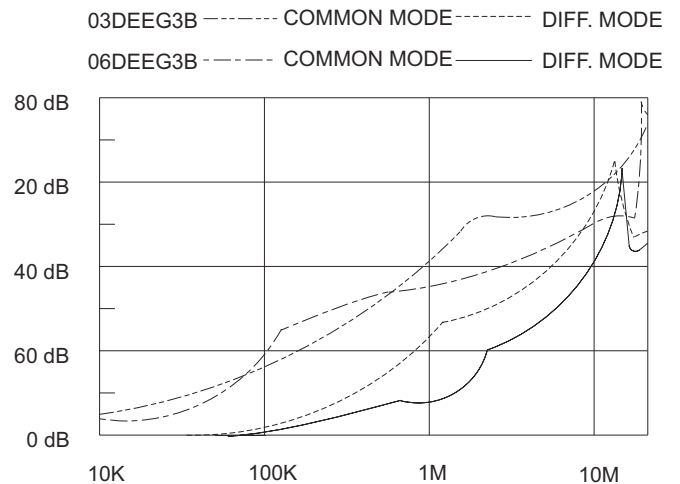
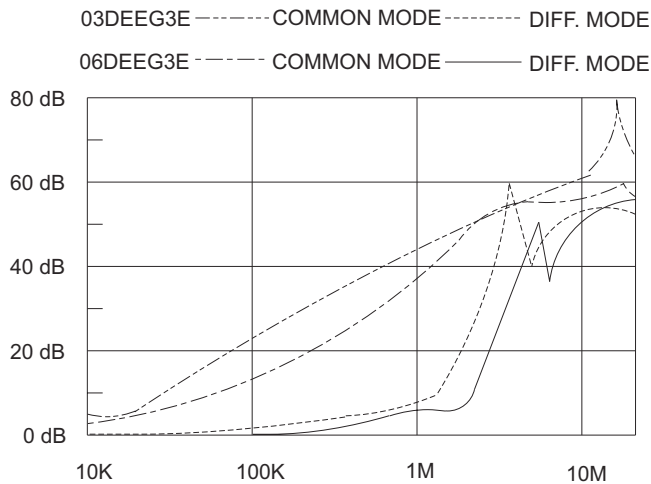


MINIMUM INSERTION LOSS IN dB

COMMON MODE (L-G) IN 50 OHM SYSTEM													
CURRENT RATING	FREQUENCY-MHz						CURRENT RATING	FREQUENCY-MHz					
	.15	.50	1.0	5.0	10	30		.15	.50	1.0	5.0	10	30
1A(E)(S)	22	35	40	45	45	50	1A(R)	7	15	20	40	50	55
3A(E)(S)	18	28	32	45	45	50	3A(R)	5	10	18	35	45	50
6A(E)(S)	12	20	25	40	45	50	6A(R)	1	5	10	30	40	50
10A(S)	4	10	15	30	38	45	10A(R)	0	1	2	18	28	40
6A,3A(HA)	0	1	3	14	21	41	1A(L)	3	10	15	32	30	20
1A(B)	28	40	45	45	45	45	3A(L)	1	2	5	25	25	20
3A(B)	22	30	35	45	45	45	6A(L)	0	0	1	10	15	25
6A(B)	12	20	25	40	45	45							

DIFFERENTIAL MODE (L-L) IN 50 OHM SYSTEM													
CURRENT RATING	FREQUENCY-MHz						CURRENT RATING	FREQUENCY-MHz					
	.15	.50	1.0	5.0	10	30		.15	.50	1.0	5.0	10	30
1A(E)(S)	2	6	40	42	40	40	A(R)	1	5	12	38	38	40
3A(E)(S)	2	3	35	40	40	40	3A(R)	1	5	10	35	35	40
6A(E)(S)	2	3	35	38	40	40	6A(R)	1	5	10	30	30	40
10A(S)	4	8	20	20	30	30	10A(R)	1	5	10	25	30	40
1A(B)	2	10	20	40	42	40	1A(L)	7	1	20	32	27	20
3A(B)	2	5	14	38	40	40	3A(L)	1	5	10	25	25	20
6A(B)	2	5	10	35	38	40	6A(L)	0	0	2	10	15	25

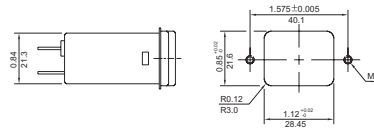
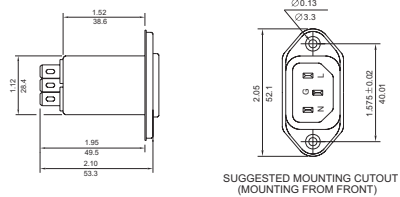
INSERTION LOSS (TYPICAL)



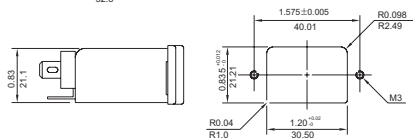
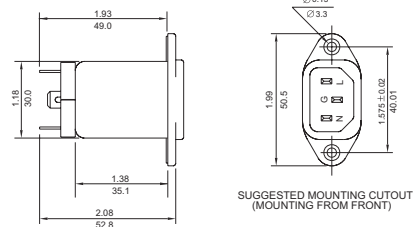
MECHANICAL CONSTRUCTION



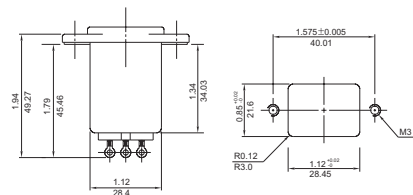
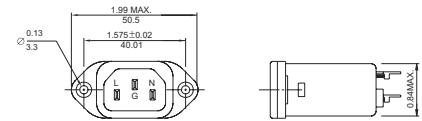
EG3E/EG3B/EG3R/EG3L
(Optional Solder Lug)



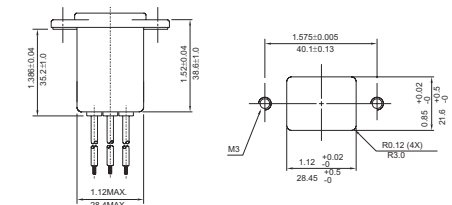
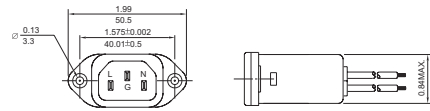
EG3HA



EG3S



W3BS



UNIT: $\frac{\text{INCH}}{\text{mm}}$

ALL WIRE LEADS 4.0" LONG MIN.