



Chipsmall Limited consists of a professional team with an average of over 10 year of expertise in the distribution of electronic components. Based in Hongkong, we have already established firm and mutual-benefit business relationships with customers from,Europe,America and south Asia,supplying obsolete and hard-to-find components to meet their specific needs.

With the principle of "Quality Parts,Customers Priority,Honest Operation,and Considerate Service",our business mainly focus on the distribution of electronic components. Line cards we deal with include Microchip,ALPS,ROHM,Xilinx,Pulse,ON,Everlight and Freescale. Main products comprise IC,Modules,Potentiometer,IC Socket,Relay,Connector.Our parts cover such applications as commercial,industrial, and automotives areas.

We are looking forward to setting up business relationship with you and hope to provide you with the best service and solution. Let us make a better world for our industry!



Contact us

Tel: +86-755-8981 8866 Fax: +86-755-8427 6832

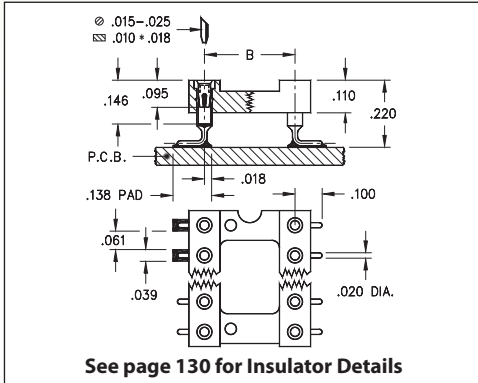
Email & Skype: info@chipsmall.com Web: www.chipsmall.com

Address: A1208, Overseas Decoration Building, #122 Zhenhua RD., Futian, Shenzhen, China

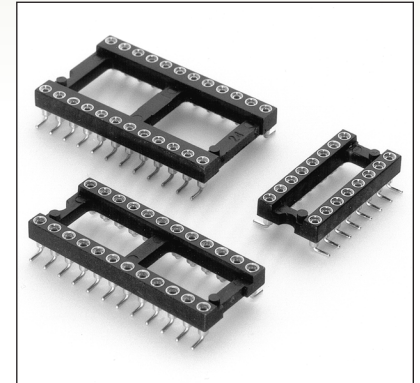


DUAL-IN-LINE SOCKETS

SERIES 110...105 • SURFACE MOUNT, GULL WING • OPEN FRAME



- Socket pins feature closed end construction eliminating any solder wicking problems
- Gull wing terminals provide maximum strength and permit easy visual inspection of solder joints. Series 110 uses Mill-Max #1005 pins. See page 166 for details
- Hi-Rel, 4-finger BeCu #30 contact is rated at 3 amps. See page 253 for details
- Insulators are high temperature thermoplastic, suitable for all soldering operations
- For Electrical, Mechanical and Environmental Data, see page 264 for details



| Total number of pins | | | | Quantity per tube | <h3>ORDERING INFORMATION</h3> | | | | | | | | | |
|--|-----|----------|----------|-------------------|---|----------|--------------|--------------|--|--|--|--|-----------|--|
| | A | B | C | | | | | | | | | | | |
| 10 | 0.5 | 0.2 | 0.3 | 40 | 110-XX-210-41-105000 | | | | | | | | | |
| 4 | 0.2 | 0.3 | 0.4 | 102 | 110-XX-304-41-105000 | | | | | | | | | |
| 6 | 0.3 | 0.3 | 0.4 | 67 | 110-XX-306-41-105000 | | | | | | | | | |
| 8 | 0.4 | 0.3 | 0.4 | 50 | 110-XX-308-41-105000 | | | | | | | | | |
| 10 | 0.5 | 0.3 | 0.4 | 40 | 110-XX-310-41-105000 | | | | | | | | | |
| 14 | 0.7 | 0.3 | 0.4 | 28 | 110-XX-314-41-105000 | | | | | | | | | |
| 16 | 0.8 | 0.3 | 0.4 | 25 | 110-XX-316-41-105000 | | | | | | | | | |
| 18 | 0.9 | 0.3 | 0.4 | 22 | 110-XX-318-41-105000 | | | | | | | | | |
| 20 | 1.0 | 0.3 | 0.4 | 20 | 110-XX-320-41-105000 | | | | | | | | | |
| 22 | 1.1 | 0.3 | 0.4 | 18 | 110-XX-322-41-105000 | | | | | | | | | |
| 24 | 1.2 | 0.3 | 0.4 | 16 | 110-XX-324-41-105000 | | | | | | | | | |
| 28 | 1.4 | 0.3 | 0.4 | 14 | 110-XX-328-41-105000 | | | | | | | | | |
| 20 | 1.0 | 0.4 | 0.5 | 20 | 110-XX-420-41-105000 | | | | | | | | | |
| 22 | 1.1 | 0.4 | 0.5 | 18 | 110-XX-422-41-105000 | | | | | | | | | |
| 24 | 1.2 | 0.4 | 0.5 | 16 | 110-XX-424-41-105000 | | | | | | | | | |
| 28 | 1.4 | 0.4 | 0.5 | 14 | 110-XX-428-41-105000 | | | | | | | | | |
| 32 | 1.6 | 0.4 | 0.5 | 12 | 110-XX-432-41-105000 | | | | | | | | | |
| 24 | 1.2 | 0.6 | 0.7 | 16 | 110-XX-624-41-105000 | | | | | | | | | |
| 28 | 1.4 | 0.6 | 0.7 | 14 | 110-XX-628-41-105000 | | | | | | | | | |
| 32 | 1.6 | 0.6 | 0.7 | 12 | 110-XX-632-41-105000 | | | | | | | | | |
| 36 | 1.8 | 0.6 | 0.7 | 11 | 110-XX-636-41-105000 | | | | | | | | | |
| 40 | 2.0 | 0.6 | 0.7 | 10 | 110-XX-640-41-105000 | | | | | | | | | |
| 42 | 2.1 | 0.6 | 0.7 | 9 | 110-XX-642-41-105000 | | | | | | | | | |
| 48 | 2.4 | 0.6 | 0.7 | 8 | 110-XX-648-41-105000 | | | | | | | | | |
| 50 | 2.5 | 0.6 | 0.7 | 8 | 110-XX-650-41-105000 | | | | | | | | | |
| 52 | 2.6 | 0.6 | 0.7 | 7 | 110-XX-652-41-105000 | | | | | | | | | |
| 50 | 2.5 | 0.9 | 1.0 | 8 | 110-XX-950-41-105000 | | | | | | | | | |
| 52 | 2.6 | 0.9 | 1.0 | 7 | 110-XX-952-41-105000 | | | | | | | | | |
| 64 | 3.2 | 0.9 | 1.0 | 6 | 110-XX-964-41-105000 | | | | | | | | | |
| See page 264 for coplanarity information | | | | | <div style="border: 1px solid black; border-radius: 50%; padding: 5px; display: inline-block;"> XX=Plating Code See Below </div> | | | | | | | | | |
| | | | | | SPECIFY PLATING CODE XX= | | 91 | 93 | | | | | 43 | |
| | | | | | Sleeve (Pin) | | 200 μ" Sn/Pb | 200 μ" Sn/Pb | | | | | 200 μ" Sn | |
| Contact (Clip) | | 10 μ" Au | 30 μ" Au | | | 30 μ" Au | | | | | | | | |

