



Chipsmall Limited consists of a professional team with an average of over 10 year of expertise in the distribution of electronic components. Based in Hongkong, we have already established firm and mutual-benefit business relationships with customers from,Europe,America and south Asia,supplying obsolete and hard-to-find components to meet their specific needs.

With the principle of “Quality Parts,Customers Priority,Honest Operation,and Considerate Service”,our business mainly focus on the distribution of electronic components. Line cards we deal with include Microchip,ALPS,ROHM,Xilinx,Pulse,ON,Everlight and Freescale. Main products comprise IC,Modules,Potentiometer,IC Socket,Relay,Connector.Our parts cover such applications as commercial,industrial, and automotives areas.

We are looking forward to setting up business relationship with you and hope to provide you with the best service and solution. Let us make a better world for our industry!



## Contact us

Tel: +86-755-8981 8866 Fax: +86-755-8427 6832

Email & Skype: info@chipsmall.com Web: www.chipsmall.com

Address: A1208, Overseas Decoration Building, #122 Zhenhua RD., Futian, Shenzhen, China



# TS 600

## Gas Torches



### TS 600 Specifications

Item No.	72600 72601 kit
Included Accessories	soldering tip and protective cap
Soldering Iron Tip	480°F - 1000°F (250°C - 550°C)
Torch	2400°F (1316°C)
Flameless Heat	1400°F (750°C) with available hot air blower tip
Electric Equivalent	30 - 125 watts
Fuel Capacity	38 ml (120 min)
Fuel Type	standard butane fuel triple filtered
Ignition	Piezo Electronic System with 15 sec. heat-up
Tip Dimensions	0.06" (1.52 mm)
Dimensions	10.0" x 1.20" x 1.25" (l x w x d) (with protective cap)
Net Weight	0.3 lb (5.4 oz)
Single Sell Pack	dimensions: 12.0" x 4.0" x 1.3" weight: 0.5 lbs (8.0 oz)
Warranty	one year limited
Certifications	CE, RoHs Compliant

### ThermoSolder™ 600

High capacity soldering iron offers auto ignition, powerful 30W - 125W output, and a refillable 38 ml tank for 120 minutes of continuous use.

### Applications

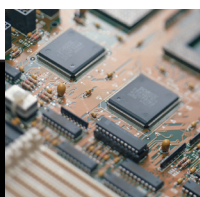
For automotive and truck repairs, aviation service repair, electrical components, environmental splicing, infield repairs, insulated solder preform, jewelry repair, loosen rusted nuts and bolts, maintain switch panels, repair television sets, meters, switch boards, sensitive IC boards, shrink tubing, silver solder, soften window caulking, solder circuit boards, tv cable systems, and weld plastics

### Key Features:

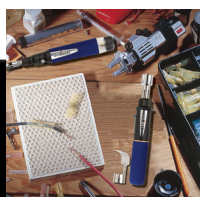
- Cordless
- Safe operation anywhere
- Ready to use 15 seconds after ignition
- Tank contains fuel for 160 minutes of operation



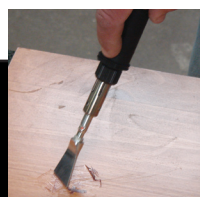
Metal glasses can be soldered to form a more solid joint.



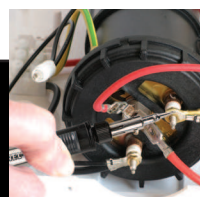
Solder Circuit Board



Solder Sleeves



Wood Repair



Water Heater Installation



www.steinell.net

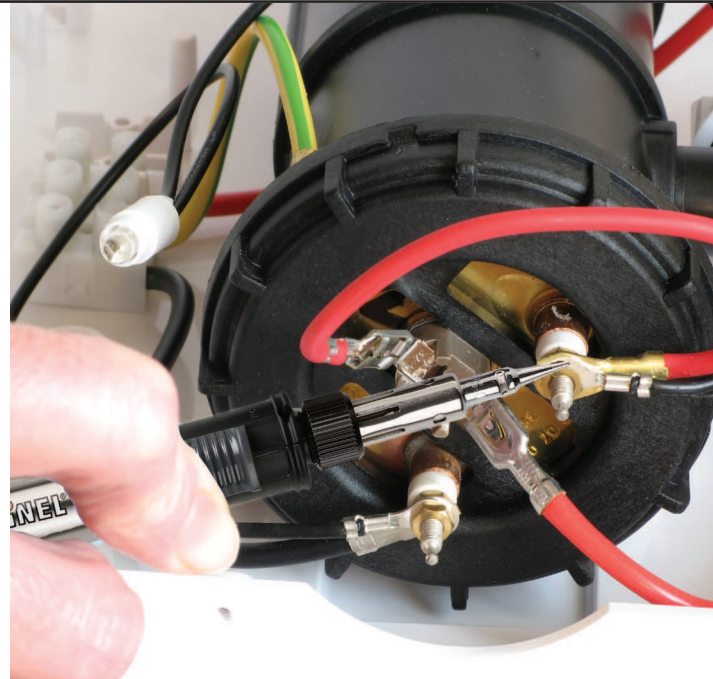
### Industry Specific Kits Available



#### ThermaSolder 600 K Contents

- TS 600 Soldering Iron
- Heat Blower Tip
- Reflector Tip
- Hot Knife Tip
- Chisel Tip
- Soldering Tip
- Spare Orifice
- Solder with Dispenser
- Tip Cleaning Sponge
- Protective Cap
- Case

No. 72601



### Accessories for a Variety of Applications



**TS 90**  
Solder 3 Pack  
1 mm diameter  
No. 72064



**TS 29**  
Spare Orifice  
No. 72029



**TS 21**  
Conical Tip  
1.6 mm  
No. 72021



**TS 23**  
Chisel Tip  
2.4 mm  
No. 72023



**TS 24**  
Chisel Tip  
3.2 mm  
No. 72024



**TS 25**  
Hot Knife Tip  
No. 72025



**TS 26**  
Angle Tip  
3.2 mm  
No. 72026



**BT 05**  
Filtered Butane  
5 Oz  
No. 70005



**BT 01**  
Filtered Butane  
1 Oz  
No. 70001