



Chipsmall Limited consists of a professional team with an average of over 10 year of expertise in the distribution of electronic components. Based in Hongkong, we have already established firm and mutual-benefit business relationships with customers from,Europe,America and south Asia,supplying obsolete and hard-to-find components to meet their specific needs.

With the principle of “Quality Parts,Customers Priority,Honest Operation,and Considerate Service”,our business mainly focus on the distribution of electronic components. Line cards we deal with include Microchip,ALPS,ROHM,Xilinx,Pulse,ON,Everlight and Freescale. Main products comprise IC,Modules,Potentiometer,IC Socket,Relay,Connector.Our parts cover such applications as commercial,industrial, and automotives areas.

We are looking forward to setting up business relationship with you and hope to provide you with the best service and solution. Let us make a better world for our industry!



Contact us

Tel: +86-755-8981 8866 Fax: +86-755-8427 6832

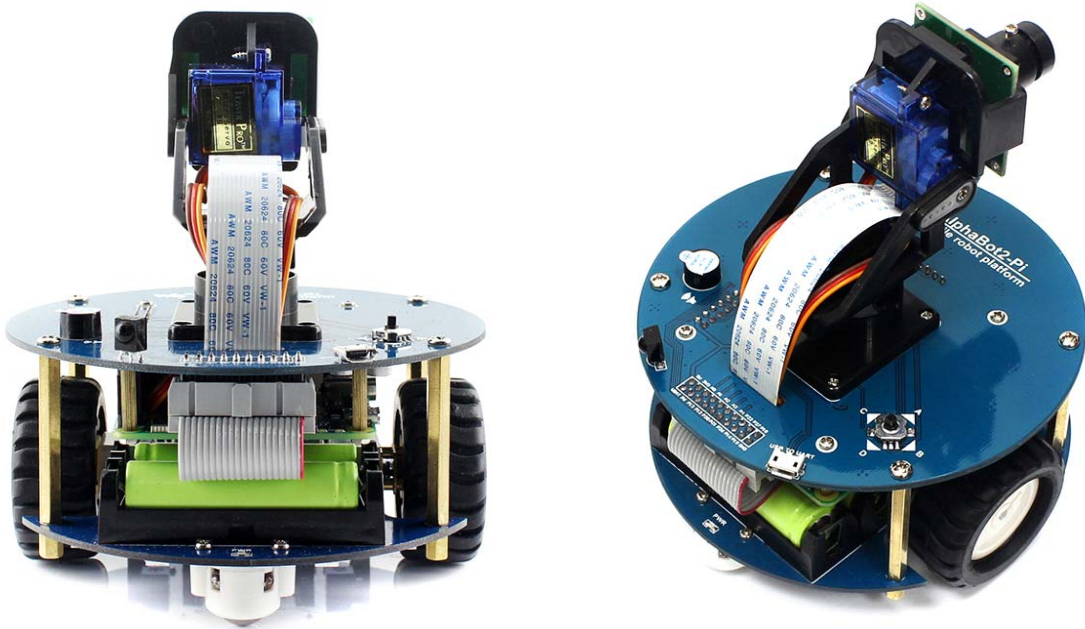
Email & Skype: info@chipsmall.com Web: www.chipsmall.com

Address: A1208, Overseas Decoration Building, #122 Zhenhua RD., Futian, Shenzhen, China



AlphaBot2 robot building kit for Raspberry Pi 3 Model B (no Pi)

SKU 110060865



Description

Note: Raspberry Pi is NOT included.

This AlphaBot2 robot kit is designed to use with Raspberry Pi 3 Model B (not included). It features rich common robot functions including line tracking, obstacle avoiding, Bluetooth/infrared/WiFi remote control, video monitoring, etc.

Thanks to the highly integrated modular design, it is fairly easy to assemble by a snap, no soldering, no wiring. After a few minutes spent on hardware assembling, you're almost there, our open source demo codes is ready to help you get started fast.

AlphaBot2 Features

AlphaBot2 employs a 2-layer structure to provide excellent stability and compatibility.

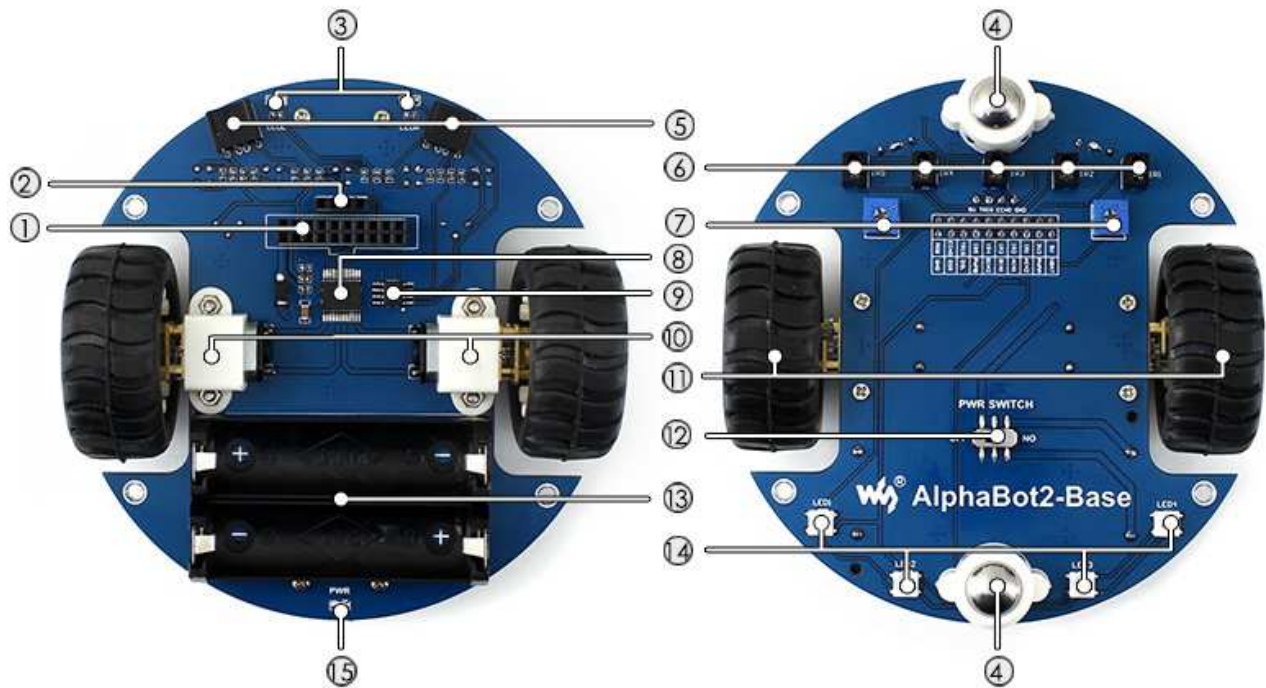
AlphaBot2-Base, the lower base chassis:

- 5-ch infrared sensor, analog output, combined with PID algorithm, stable line tracking
- Onboard modules like line tracking, obstacle avoiding, needs no messy wiring
- TB6612FNG dual H-bridge motor driver, compared with L298P, it's more efficient, more compact, and less heating
- N20 micro gear motor, with metal gears, low noise, high accuracy
- Onboard RGB LEDs, true color lighting, pretty cool

AlphaBot2-Pi, the upper adapter board for controller:

- LM2596 voltage regulator, provides the Pi with stable 5V power
- TLC1543 AD acquisition chip, allows the Pi to use analog sensors
- PCA9685 servo controller, make it more smoothly to rotate the pan head
- CP2102 UART converter, easy for controlling the Pi via UART

What's on the AlphaBot2-Base



1. AlphaBot2 control interface: for connecting sorts of controller adapter board

2. Ultrasonic module interface

3. Obstacle avoiding indicators

4. Omni-direction wheel

5. ST188: reflective infrared photoelectric sensor, for obstacle avoiding

6. ITR20001/T: reflective infrared photoelectric sensor, for line tracking

7. Potentiometer for adjusting obstacle avoiding range

8. TB6612FNG dual H-bridge motor driver

9. LM393 voltage comparator

10. N20 micro gear motor reduction rate 1:30, 6V/600RPM

11. **Rubber wheels** diameter 42mm, width 19mm

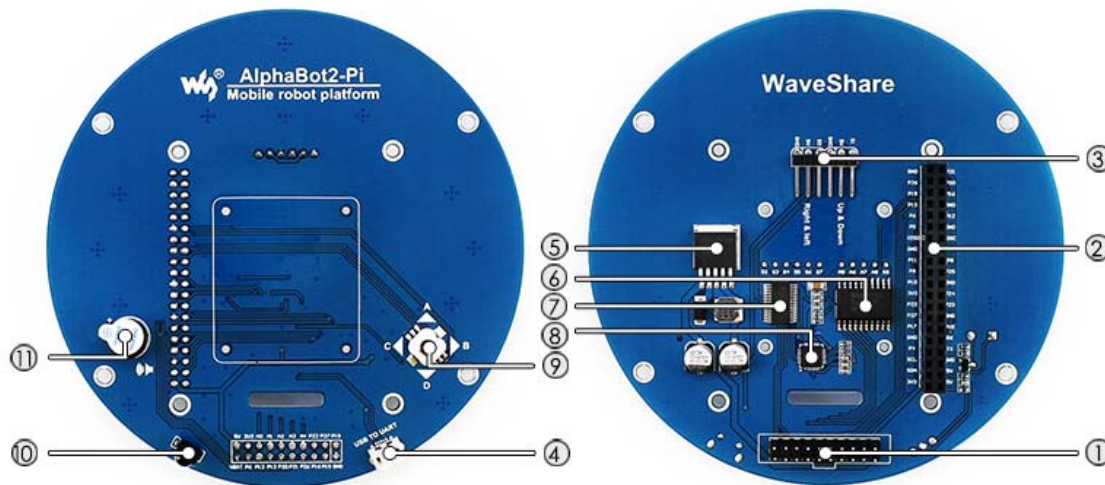
12. **Power switch**

13. **Battery holder**: supports 14500 batteries

14. **WS2812B**: true color RGB LEDs

15. **Power indicator**

What's on the AlphaBot2-Pi



1. **AlphaBot2 control interface**: for connecting AlphaBot2-Base

2. **Raspberry Pi interface**: for connecting Raspberry Pi 3 Model B

3. **Servo interface**

4. **USB TO UART**: easy for controlling the Pi via UART

5. **LM2596**: 5V voltage regulator

6. **TLC1543**: 10-bit AD acquisition chip, allows the Pi to use analog sensors

7. **PCA9685**: servo controller, make it more smoothly to rotate the pan head

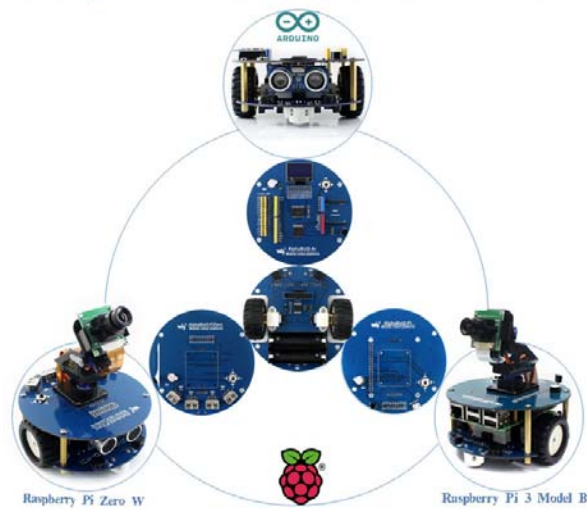
8. **CP2102**: USB TO UART converter

9. **Joystick**

10. **IR receiver**

11. **Buzzer**

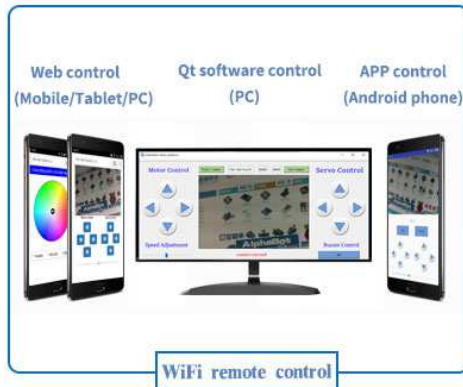
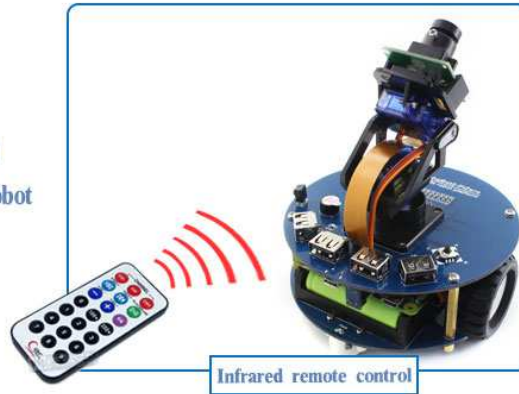
Base board + Adapter board Compatible with multi controller boards



Modular design, Easy installing without wiring



Infrared remote control
Easily take control of your robot

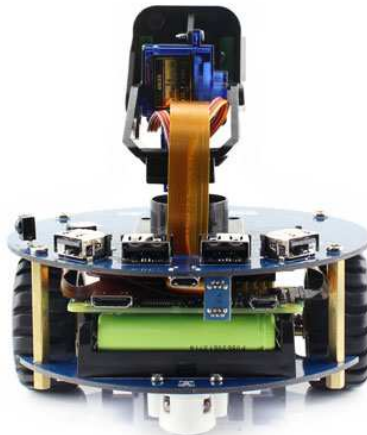


WiFi remote control
Via Webpage
Via Qt software on PC
Via Android APP
Supports routing, allows creating WiFi hotspot

Video monitoring
5M pixels camera, 1080P
2-DOF pan and tilt
Hardware PWM servo, rotates smoothly

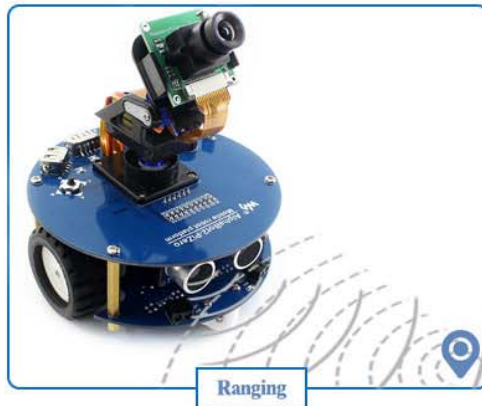


Clever design, Proper layout, Stable structure



Full functions, How to play, Up to you

Auto obstacle avoiding
Infrared obstacle avoiding
Easily get out of obstacles in the way



Ultrasonic sensing
Ultrasonic ranging
Ultrasonic obstacle avoiding

Auto line tracking
5-ch detector, high sensitivity
PID algorithm, stable tracking



Bluetooth remote control
Communicate with the Raspberry Pi Zero W
integrated Bluetooth
Get the robot moving, get the RGB LED flashing
Android APP is provided

Technical Details

Dimensions	220mm x 165mm x 70mm
Weight	G.W 381g
Battery	Exclude

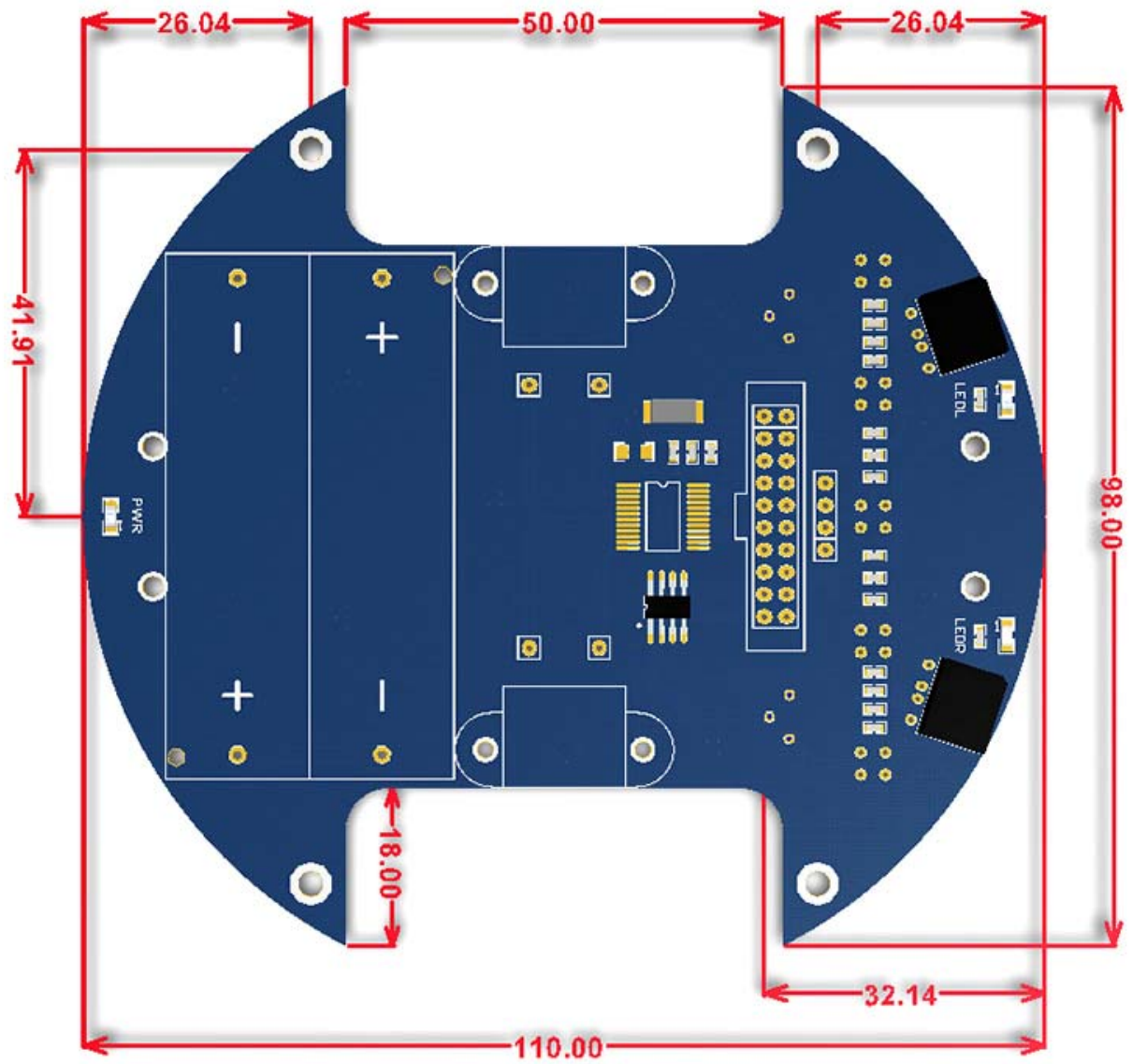
Part List

AlphaBot2-Pi (adapter board)	1
AlphaBot2-Base (base chassis)	1
RPi Camera (B)	1
Micro SD Card 16GB	1

Power adapter US standard 5V/2.5A USB output	1
SG90 servo	2
2 DOF pan and tilt kit	1
IR remote controller	1
FC-20P cable 8cm	1
USB type A plug to micro B plug cable	1
15PIN FFC 25cm	1
AlphaBot2-Pi screws	1

Micro SD Card Reader	1
Screwdriver	1

Package Contents		Products				
Item	Description	AlphaBot2-Ar Acc Pack	AlphaBot2-Ar	AlphaBot2-Pi Acc Pack	AlphaBot2-Pi	AlphaBot2-PiZero Acc Pack
AlphaBot2-Base	Motor driver, integrates sensors for obstacle avoiding, line tracking	√	√	√	√	√
AlphaBot2-Ar	Adapter board, for connecting Arduino	√	√			
AlphaBot2-Pi	Adapter board, for connecting RPi3 B			√	√	
AlphaBot2-PiZero	Adapter board, for connecting RPi Zero W					√
RPi3 B	Raspberry Pi 3 Model B				√	
UNO PLUS	Enhanced Arduino compatible board		√			
Dual-mode Bluetooth	Dual-mode Bluetooth module		√			
Ultrasonic sensor	Ultrasonic obstacle avoiding, ranging	√	√			√
IR remote controller	remotely control the robot	√	√	√	√	√
RPi Camera (B)	Raspberry Pi camera, adjustable focus			√	√	√
SG90	Servo, working with the pan head, controlling the rotation of the camera			√	√	√
Micro SD Card 16GB	16GB Miro SD Card, class 10			√	√	√
5V 2.5A Power Adapter	RPi3 B requires 2.5A or above power supply			√	√	√



Unit:mm