



Chipsmall Limited consists of a professional team with an average of over 10 year of expertise in the distribution of electronic components. Based in Hongkong, we have already established firm and mutual-benefit business relationships with customers from,Europe,America and south Asia,supplying obsolete and hard-to-find components to meet their specific needs.

With the principle of “Quality Parts,Customers Priority,Honest Operation,and Considerate Service”,our business mainly focus on the distribution of electronic components. Line cards we deal with include Microchip,ALPS,ROHM,Xilinx,Pulse,ON,Everlight and Freescale. Main products comprise IC,Modules,Potentiometer,IC Socket,Relay,Connector.Our parts cover such applications as commercial,industrial, and automotives areas.

We are looking forward to setting up business relationship with you and hope to provide you with the best service and solution. Let us make a better world for our industry!



## Contact us

Tel: +86-755-8981 8866 Fax: +86-755-8427 6832

Email & Skype: info@chipsmall.com Web: www.chipsmall.com

Address: A1208, Overseas Decoration Building, #122 Zhenhua RD., Futian, Shenzhen, China





## AlphaBot2 robot building kit for Arduino (no Arduino controller)

SKU 110060866

### Description

**The Arduino controller is NOT included.**

This AlphaBot2 robot kit is designed to use with an Arduino compatible controller (not included). It features rich common robot functions including line tracking, obstacle avoiding, ultrasonic ranging, infrared remote control, Bluetooth communication, etc.

Thanks to the highly integrated modular design, it is fairly easy to assemble by a snap, no soldering, no wiring. After a few minutes spent on hardware assembling, you're almost there, our open source demo codes is ready to help you get started fast.

## AlphaBot2 Features

AlphaBot2 employs a 2-layer structure to provide excellent stability and compatibility.

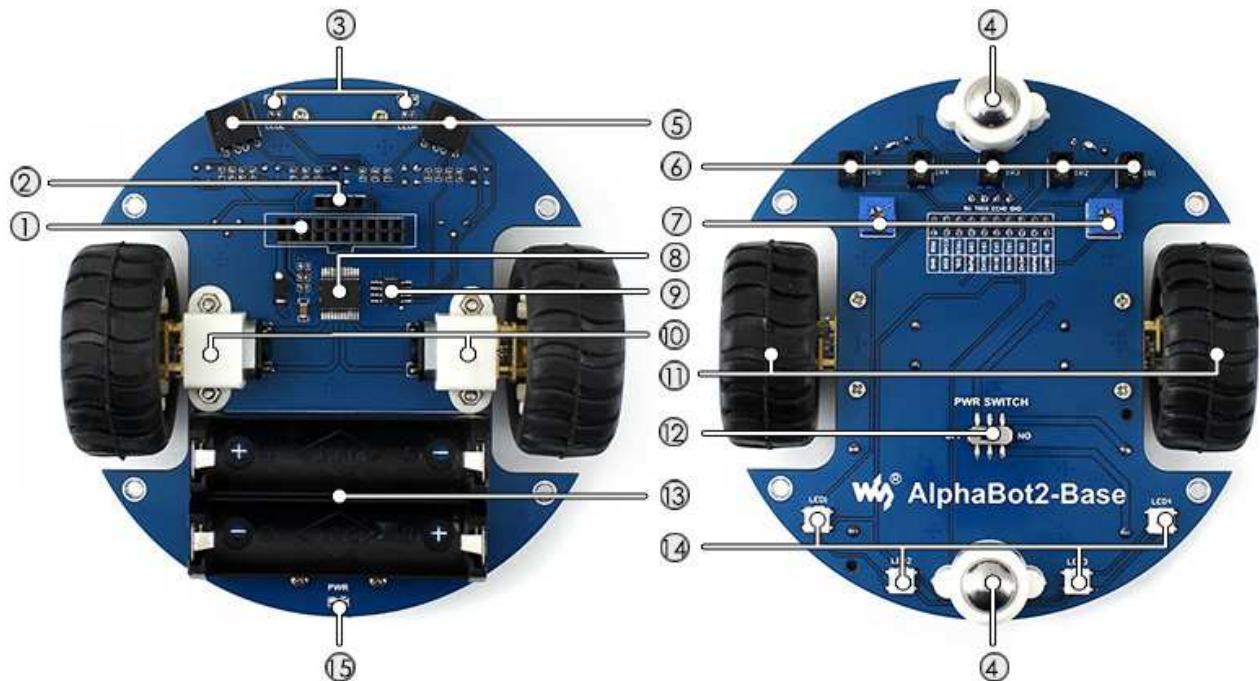
### AlphaBot2-Base, the lower base chassis:

- 5-ch infrared sensor, analog output, combined with PID algorithm, stable line tracking
- Onboard modules like line tracking, obstacle avoiding, needs no messy wiring
- TB6612FNG dual H-bridge motor driver, compared with L298P, it's more efficient, more compact, and less heating
- N20 micro gear motor, with metal gears, low noise, high accuracy
- Onboard RGB LEDs, true color lighting, pretty cool

### AlphaBot2-Ar, the upper adapter board for controller:

- Onboard Arduino interface, into which Arduino controller can be directly plugged
- 0.96inch 128x64 yellow/blue dual color OLED
- TLC1543 AD acquisition chip
- PC8574 I/O expander, avoid I/O shortage
- Xbee connector, for connecting dual-mode Bluetooth module

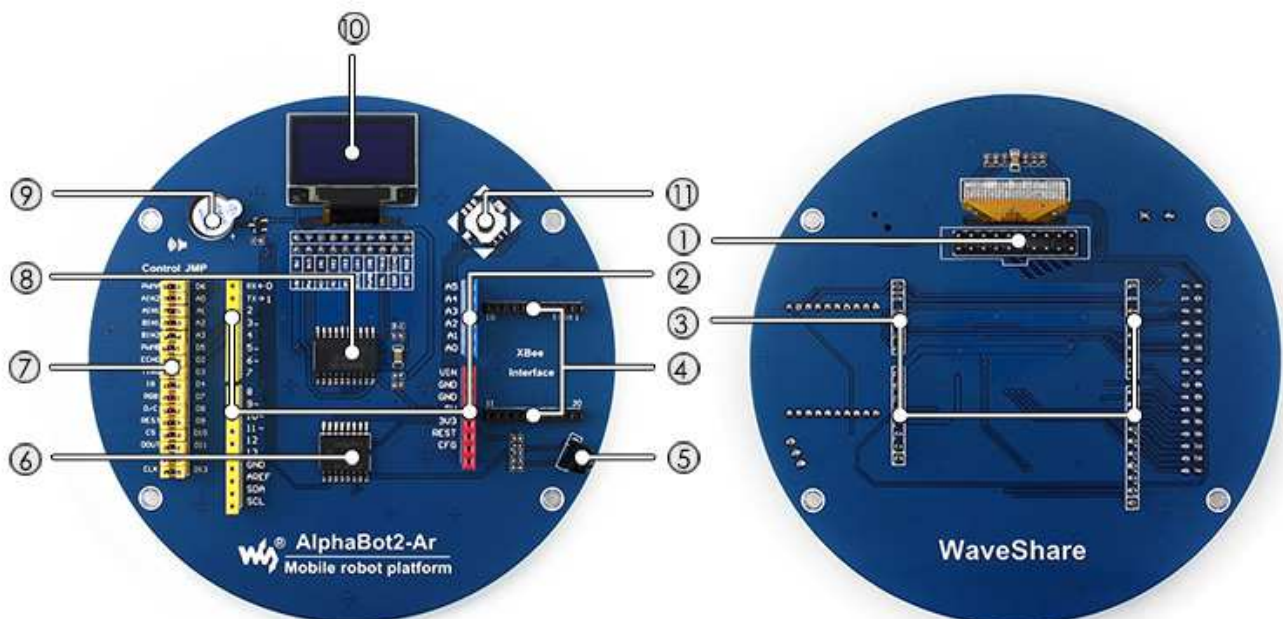
## What's on the AlphaBot2-Base



1. **AlphaBot2 control interface:** for connecting sorts of controller adapter board
2. **Ultrasonic module interface**
3. **Obstacle avoiding indicators**
4. **Omn-direction wheel**
5. **ST188:** reflective infrared photoelectric sensor, for obstacle avoiding
6. **ITR20001/T:** reflective infrared photoelectric sensor, for line tracking

7. **Potentiometer** for adjusting obstacle avoiding range
8. **TB6612FNG** dual H-bridge motor driver
9. **LM393** voltage comparator
10. **N20 micro gear motor** reduction rate 1:30, 6V/600RPM
11. **Rubber wheels** diameter 42mm, width 19mm
12. **Power switch**
13. **Battery holder**: supports 14500 batteries
14. **WS2812B**: true color RGB LEDs
15. **Power indicator**

### What's on the AlphaBot2-Ar

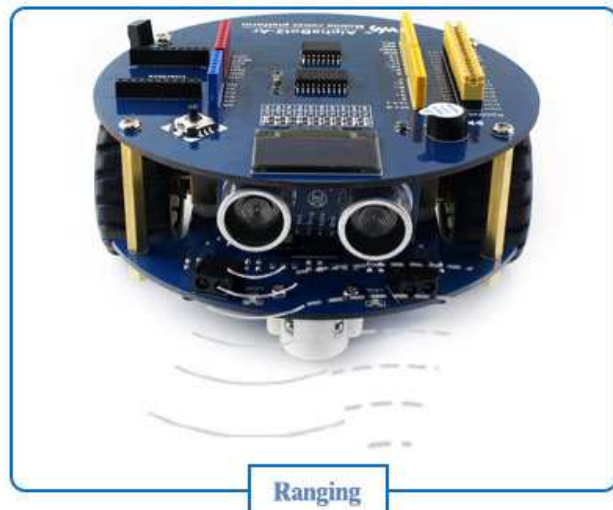


1. **AlphaBot2 control interface**: for connecting AlphaBot2-Base
2. **Arduino expansion header**: for connecting Arduino shields
3. **Arduino interface**: for connecting Arduino compatible controller
4. **Xbee connector**: for connecting dual-mode Bluetooth module, remotely control the robot via Bluetooth
5. **IR receiver**
6. **PC8574**: I/O expander, SPI interface
7. **Arduino peripheral jumpers**
8. **TLC1543**: 10-bit AD acquisition chip
9. **Buzzer**
10. **0.96inch OLED** SSD1306 driver, 128x64 resolution
11. **Joystick**

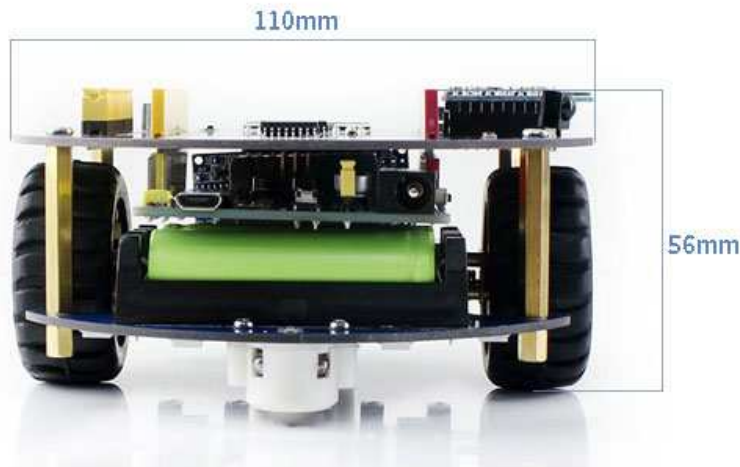


Infrared/Bluetooth remote control  
Easily take control of your robot

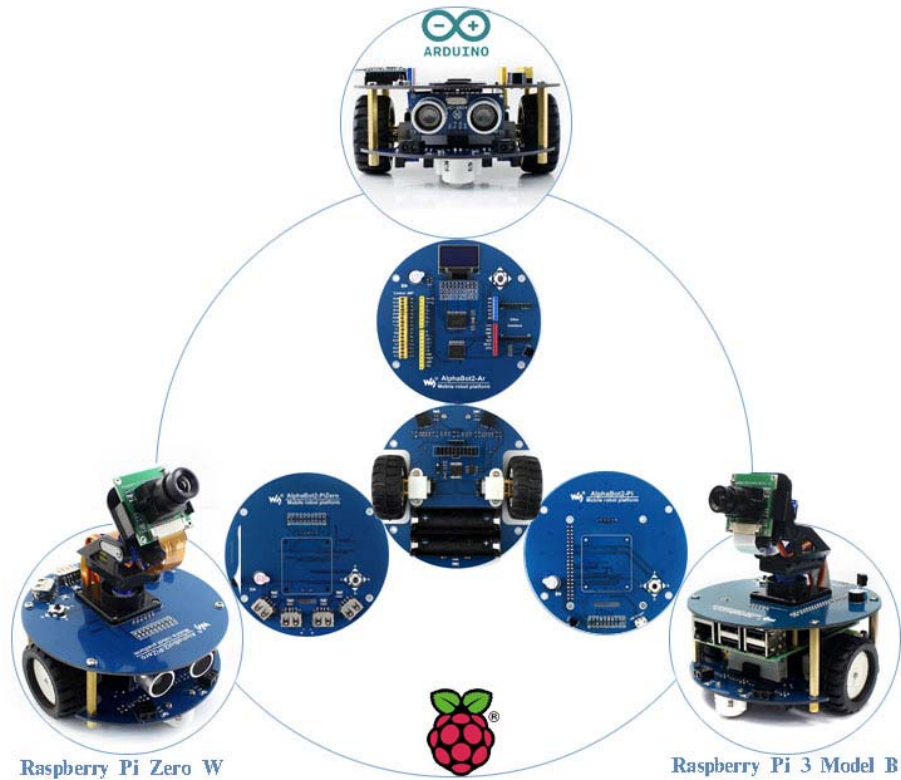
Ultrasonic sensing  
Ultrasonic ranging  
Ultrasonic obstacle avoiding



Clever design, Proper layout, Stable structure



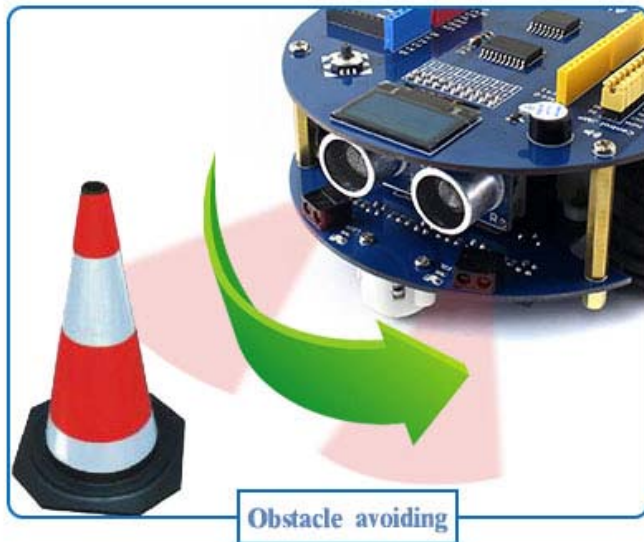
## Base board + Adapter board Compatible with multi controller boards



Modular design, Easy installing without wiring

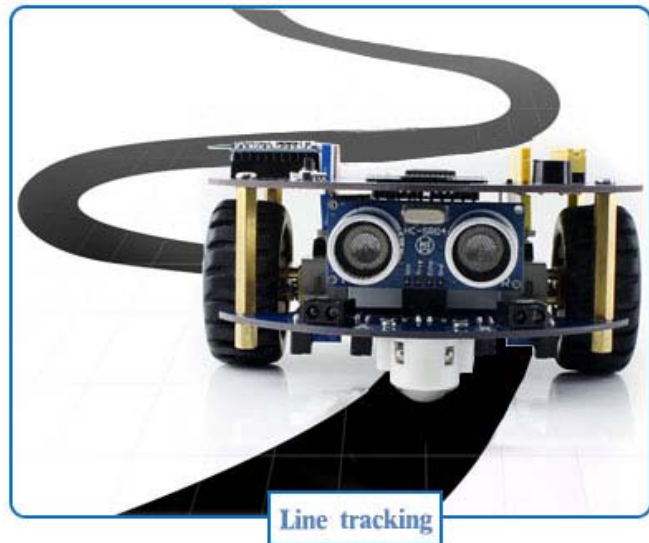


## Full functions, How to play, Up to you



**Auto obstacle avoiding**  
Infrared obstacle avoiding  
Easily get out of obstacles in the way

**Auto line tracking**  
5-ch detector, high sensitivity  
PID algorithm, stable tracking



## Technical Details

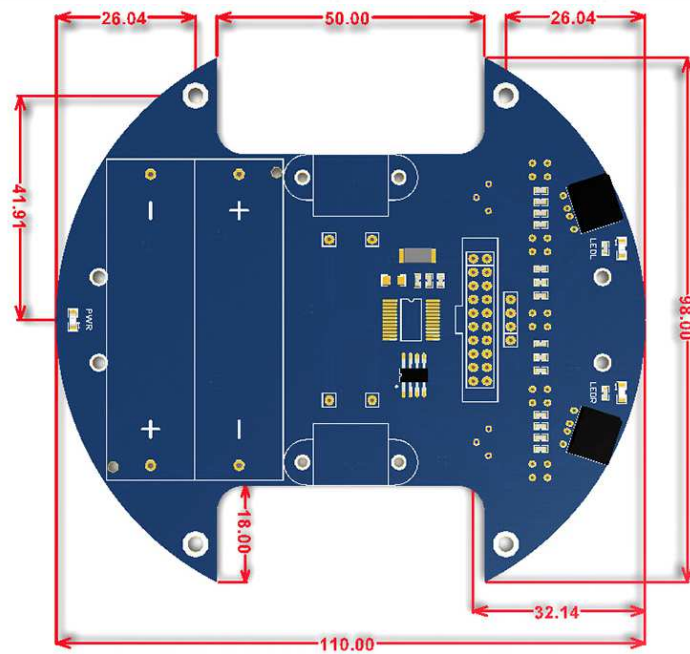
Dimensions	220mm x 165mm x 70mm
Weight	G.W 282g
Battery	Exclude

## Part List

AlphaBot2-Ar (adapter board)	1
AlphaBot2-Base (base chassis)	1
Ultrasonic sensor	1
IR remote controller	1
FC-20P cable 8cm	1
USB type A plug to micro B plug cable	1
AlphaBot2-Ar screws	1
Screwdriver	1



Package Contents		Products				
Item	Description	AlphaBot2-Ar Acc Pack	AlphaBot2-Ar	AlphaBot2-Pi Acc Pack	AlphaBot2-Pi	AlphaBot2-PiZero Acc Pack
AlphaBot2-Base	Motor driver, integrates sensors for obstacle avoiding, line tracking	√	√	√	√	√
AlphaBot2-Ar	Adapter board, for connecting Arduino	√	√			
AlphaBot2-Pi	Adapter board, for connecting RPi3 B			√	√	
AlphaBot2-PiZero	Adapter board, for connecting RPi Zero W					√
RPi3 B	Raspberry Pi 3 Model B				√	
UNO PLUS	Enhanced Arduino compatible board		√			
Dual-mode Bluetooth	Dual-mode Bluetooth module		√			
Ultrasonic sensor	Ultrasonic obstacle avoiding, ranging	√	√			√
IR remote controller	remotely control the robot	√	√	√	√	√
RPi Camera (B)	Raspberry Pi camera, adjustable focus			√	√	√
SG90	Servo, working with the pan head, controlling the rotation of the camera			√	√	√
Micro SD Card 16GB	16GB Miro SD Card, class 10			√	√	√
5V 2.5A Power Adapter	RPi3 B requires 2.5A or above power supply			√	√	√



**Unit:mm**