



Chipsmall Limited consists of a professional team with an average of over 10 year of expertise in the distribution of electronic components. Based in Hongkong, we have already established firm and mutual-benefit business relationships with customers from,Europe,America and south Asia,supplying obsolete and hard-to-find components to meet their specific needs.

With the principle of “Quality Parts,Customers Priority,Honest Operation,and Considerate Service”,our business mainly focus on the distribution of electronic components. Line cards we deal with include Microchip,ALPS,ROHM,Xilinx,Pulse,ON,Everlight and Freescale. Main products comprise IC,Modules,Potentiometer,IC Socket,Relay,Connector.Our parts cover such applications as commercial,industrial, and automotives areas.

We are looking forward to setting up business relationship with you and hope to provide you with the best service and solution. Let us make a better world for our industry!



Contact us

Tel: +86-755-8981 8866 Fax: +86-755-8427 6832

Email & Skype: info@chipsmall.com Web: www.chipsmall.com

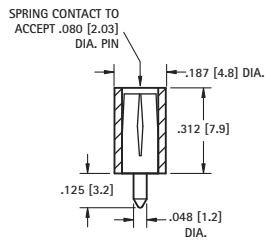
Address: A1208, Overseas Decoration Building, #122 Zhenhua RD., Futian, Shenzhen, China



.080 [2.0] PC TEST JACKS



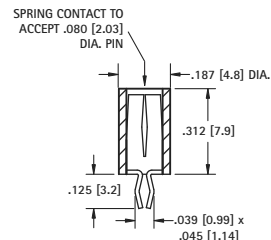
VERTICAL



CAT. NO.	COLOR
6036	WHITE
6037	RED
6038	BLACK
6039	YELLOW
6040	GREEN
6041	BLUE

MATERIAL:
Body: Nylon per ASTM D4066
Contact: Brass, Silver Plate

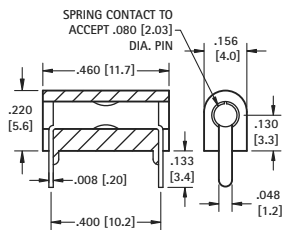
SNAP-FIT VERTICAL



CAT. NO.	COLOR
6042	WHITE
6043	RED
6044	BLACK
6045	YELLOW
6046	GREEN
6047	BLUE

MATERIAL:
Body: Nylon per ASTM D4066
Contact: Beryllium Copper, Silver Plate
Mounting: Snap-fits into .052 (1.32) hole

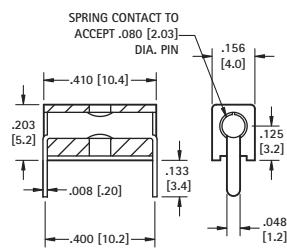
LOW PROFILE HORIZONTAL



GOLD PLATE CAT. NO.	COLOR	SILVER PLATE CAT. NO.
6060	WHITE	6066
6061	RED	6067
6062	BLACK	6068
6063	YELLOW	6069
6064	GREEN	6070
6065	BLUE	6071

MATERIAL:
Body: Nylon per ASTM D4066
Contact: Beryllium Copper, Gold or Silver Plate

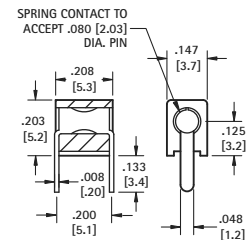
UNIVERSAL HORIZONTAL



CAT. NO.	COLOR
6054	WHITE
6055	RED
6056	BLACK
6057	YELLOW
6058	GREEN
6059	BLUE

MATERIAL:
Body: Nylon per ASTM D4066
Contact: Beryllium Copper, Silver Plate

MINIATURE HORIZONTAL



CAT. NO.	COLOR
6048	WHITE
6049	RED
6050	BLACK
6051	YELLOW
6052	GREEN
6053	BLUE

MATERIAL:
Body: Nylon per ASTM D4066
Contact: Beryllium Copper, Silver Plate

HIGH TEMPERATURE PTFE INSULATED TEST POINT JACKS

SPECIFICATIONS

Terminal Jack: Beryllium Copper (QQ-C-533)
 *Brass ASTM B16

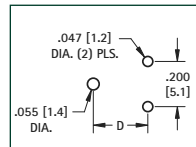
Plating: Gold per MIL-G-45204, Type II

Operating Temperature: -60 (-50) to + 500

Bushing:

White PTFE **RoHS** (RoHS Compliant)

Red or Black PTFE **RoHS** (Non-RoHS Compliant)



Mounting Detail



FIG. 1

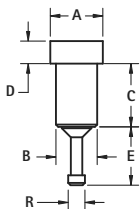


FIG. 2

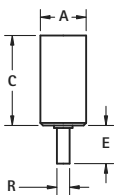
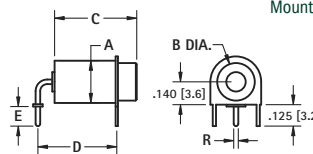


FIG. 3



RoHS		NON-RoHS									Accepts	
White	Red	Black	FIG.	A	B	C	D	E	R	Tip Dia. ± .001 (.03)	Tip Length	
11001	11001-R	11001-B	1	.142 (3.6)	.120 (3.0)	.244 (6.2)	.046 (1.2)	.120 (3.0)	.060 (1.5)	.040 (1.0)	.205 (5.2)	
11002	11002-R	11002-B	1	.142 (3.6)	.120 (3.0)	.283 (7.2)	.046 (1.2)	.120 (3.0)	.060 (1.5)	.040 (1.0)	.245 (6.2)	
11003	11003-R	11003-B	1	.172 (4.4)	.140 (3.6)	.142 (3.6)	.050 (1.3)	.060 (1.5)	.080 (2.0)	.040 (1.0)	.125 (3.2)	
11004	11004-R	11004-B	1	.172 (4.4)	.148 (3.8)	.179 (4.5)	.046 (1.2)	.120 (3.0)	.060 (1.5)	.040 (1.0)	.140 (3.6)	
11005	11005-R	11005-B	1	.218 (5.5)	.185 (4.7)	.301 (7.6)	.050 (1.3)	.105 (2.7)	.125 (3.2)	.080 (2.0)	.315 (8.0)	
11006	11006-R	11006-B	1	.218 (5.5)	.185 (4.7)	.271 (6.9)	.046 (1.2)	.120 (3.0)	.074 (1.9)	.080 (2.0)	.195 (4.9)	
11007	11007-R	11007-B	1	.218 (5.5)	.185 (4.7)	.271 (6.9)	.046 (1.2)	.120 (3.0)	.074 (1.9)	.090 (2.3)	.195 (4.9)	
11008	11008-R	11008-B	1	.218 (5.5)	.185 (4.7)	.301 (7.6)	.046 (1.2)	.120 (3.0)	.074 (1.9)	.080 (2.0)	.225 (5.7)	
11009	11009-R	11009-B	1	.218 (5.5)	.185 (4.7)	.400 (10.2)	.050 (1.3)	.187 (4.8)	.074 (1.9)	.080 (2.0)	.280 (7.1)	
11010	11010-R	11010-B	1	.218 (5.5)	.185 (4.7)	.271 (6.9)	.046 (1.2)	.136 (3.5)	.074 (1.9)	.080 (2.0)	.340 (8.6)	
11011	11011-R	11011-B	2	.218 (5.5)	-	.430 (10.9)	-	.150 (3.8)	.050 (1.3)	.080 (2.0)	.200 (5.1)	
11012*	11012-R*	11012-B*	2	.218 (5.5)	-	.500 (12.7)	-	.150 (3.8)	.050 (1.3)	.080 (2.0)	.280 (7.1)	
11013	11013-R	11013-B	3	.218 (5.5)	.187 (4.8)	.689 (17.5)	.500 (12.7)	.125 (3.2)	.050 (1.3)	.080 (2.0)	.500 (12.7)	
11014	11014-R	11014-B	3	.218 (5.5)	.187 (4.8)	.378 (9.6)	.400 (10.2)	.125 (3.2)	.050 (1.3)	.080 (2.0)	.250 (6.4)	
11015	11015-R	11015-B	3	.218 (5.5)	.187 (4.8)	.378 (9.6)	.400 (10.2)	.187 (4.7)	.035 (.89)	.080 (2.0)	.250 (6.4)	
11016	11016-R	11016-B	3	.218 (5.5)	.187 (4.8)	.378 (9.6)	.500 (12.7)	.125 (3.2)	.050 (1.3)	.080 (2.0)	.250 (6.4)	

* Terminal Material: Brass ASTM B16