



Chipsmall Limited consists of a professional team with an average of over 10 year of expertise in the distribution of electronic components. Based in Hongkong, we have already established firm and mutual-benefit business relationships with customers from,Europe,America and south Asia,supplying obsolete and hard-to-find components to meet their specific needs.

With the principle of “Quality Parts,Customers Priority,Honest Operation,and Considerate Service”,our business mainly focus on the distribution of electronic components. Line cards we deal with include Microchip,ALPS,ROHM,Xilinx,Pulse,ON,Everlight and Freescale. Main products comprise IC,Modules,Potentiometer,IC Socket,Relay,Connector.Our parts cover such applications as commercial,industrial, and automotives areas.

We are looking forward to setting up business relationship with you and hope to provide you with the best service and solution. Let us make a better world for our industry!



Contact us

Tel: +86-755-8981 8866 Fax: +86-755-8427 6832

Email & Skype: info@chipsmall.com Web: www.chipsmall.com

Address: A1208, Overseas Decoration Building, #122 Zhenhua RD., Futian, Shenzhen, China



"18350" LITHIUM-ION BATTERY HOLDERS

THM Leaf Springs



THM Polarized



Solder Lugs*



SMT Leaf Springs



SMT Polarized



FEATURES

Low profile surface mount holder for Cylindrical Lithium and alkaline batteries
UL 94V-0 heat resistant nylon housing well suited for reflow soldering
Battery installation and removal does not require tools
Securely holds battery in place

Accommodates cells with or without built-in PCB protection circuits
Polarity clearly marked for orientation
Polarized holders available for protection against improper battery installation

Operating Temp Range:
-60°F to +290°F (-50°C to +145°C)

APPLICATIONS

Computer memory, power backup systems
Digital readers
Laptop and touch pad computers
PLC and industrial controls
Electronic cigarette/vapor industry

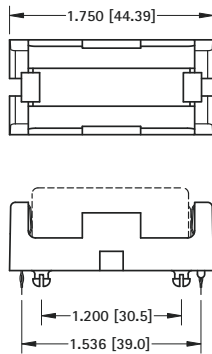
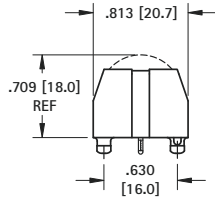


PC Battery Clip Available See Page 11.

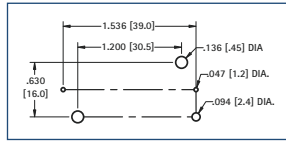
THRU HOLE MOUNT

SURFACE MOUNT

SINGLE CELL



Mounting Detail



SPECIFICATIONS

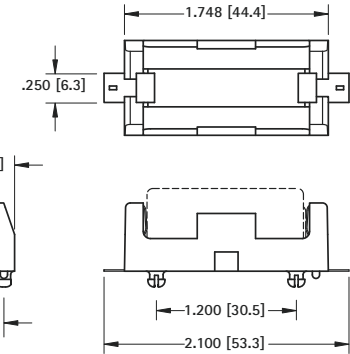
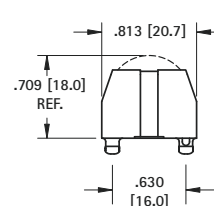
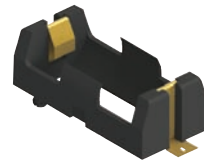
Base: High Temp Nylon 46, UL 94V-0
Contacts: .012 (.30) Stainless Steel, Tin-Nickel Plate

CAT. NO. 1095 Leaf Springs

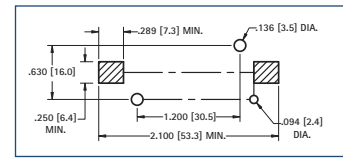
CAT. NO. 1095P Polarized Holder

CAT. NO. 1101 Solder Lugs *see image above

Packaging Spec's: 50 pieces per tray



Pad Layout



SPECIFICATIONS

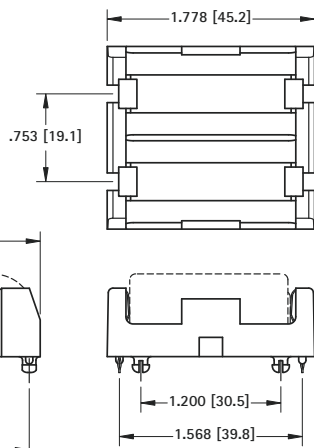
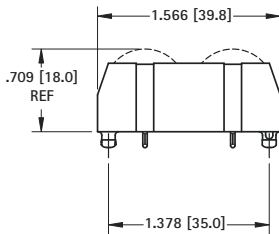
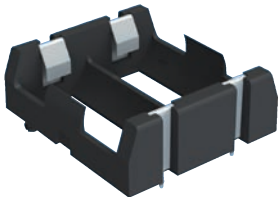
Base: High Temp Nylon 46, UL 94V-0
Contacts: .012 (.30) Stainless Steel, Gold Plate (Flash)

CAT. NO. 1095 Leaf Springs

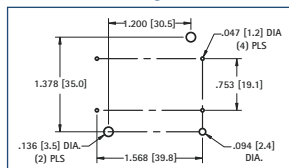
CAT. NO. 1095P Polarized Holder

Packaging Spec's: 50 pieces per tray

DUAL CELL



Mounting Detail



SPECIFICATIONS

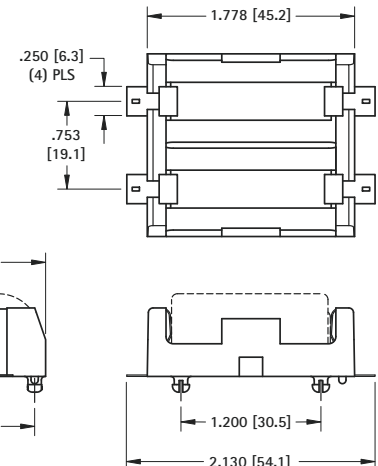
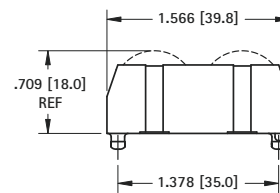
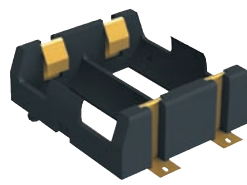
Base: High Temp Nylon 46, UL 94V-0
Contacts: .012 (.30) Stainless Steel, Tin-Nickel Plate

CAT. NO. 1097 Leaf Springs

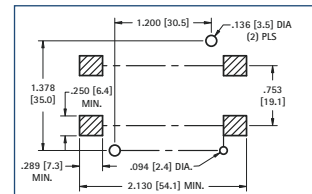
CAT. NO. 1097P Polarized Holder

CAT. NO. 1102 Solder Lugs *see image above

Packaging Spec's: 25 pieces per tray



Pad Layout



SPECIFICATIONS

Base: High Temp Nylon 46, UL 94V-0
Contacts: .012 (.30) Stainless Steel, Gold Plate (Flash)

CAT. NO. 1097 Leaf Springs

CAT. NO. 1097P Polarized Holder

Packaging Spec's: 25 pieces per tray

"18350" LITHIUM-ION BATTERY HOLDERS