



Chipsmall Limited consists of a professional team with an average of over 10 year of expertise in the distribution of electronic components. Based in Hongkong, we have already established firm and mutual-benefit business relationships with customers from,Europe,America and south Asia,supplying obsolete and hard-to-find components to meet their specific needs.

With the principle of “Quality Parts,Customers Priority,Honest Operation,and Considerate Service”,our business mainly focus on the distribution of electronic components. Line cards we deal with include Microchip,ALPS,ROHM,Xilinx,Pulse,ON,Everlight and Freescale. Main products comprise IC,Modules,Potentiometer,IC Socket,Relay,Connector.Our parts cover such applications as commercial,industrial, and automotives areas.

We are looking forward to setting up business relationship with you and hope to provide you with the best service and solution. Let us make a better world for our industry!



Contact us

Tel: +86-755-8981 8866 Fax: +86-755-8427 6832

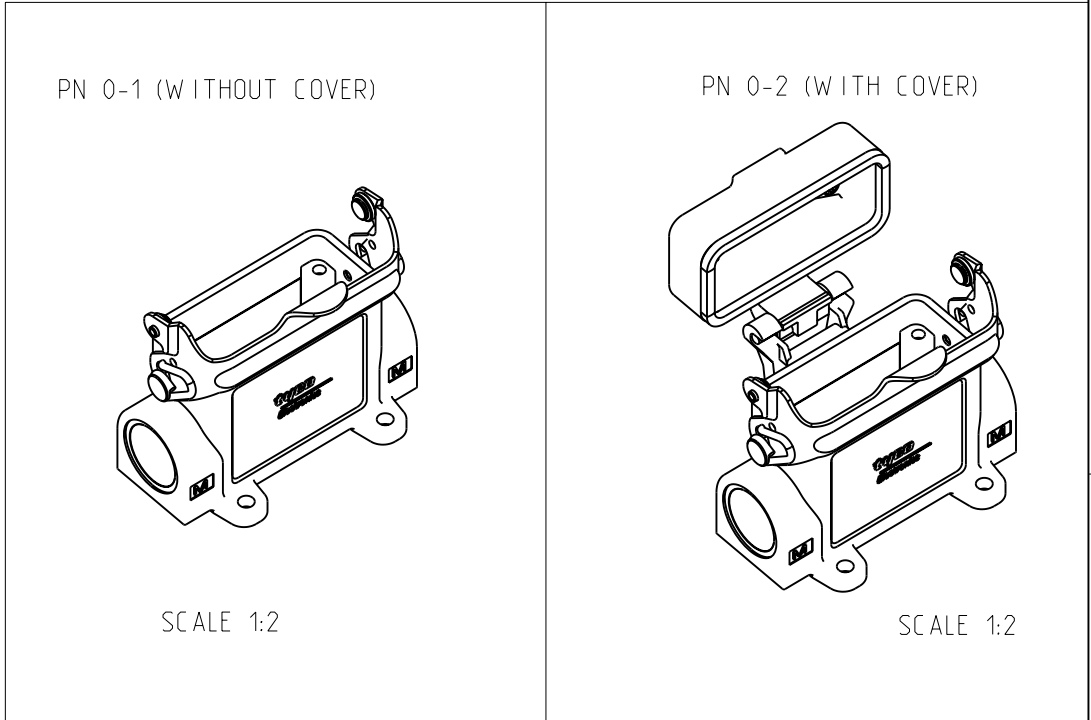
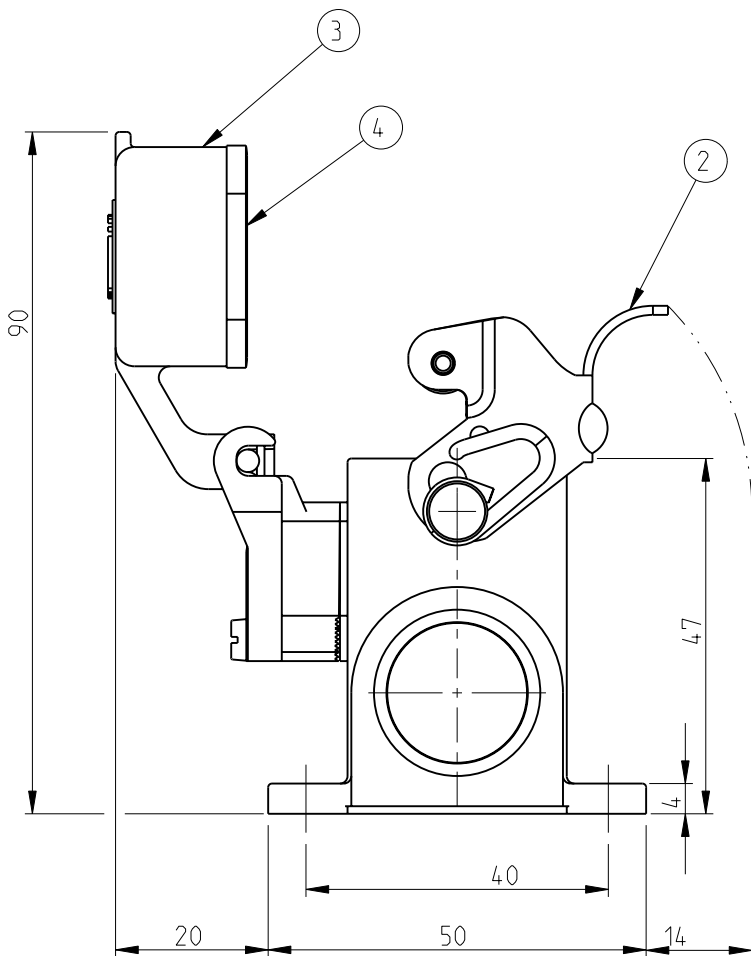
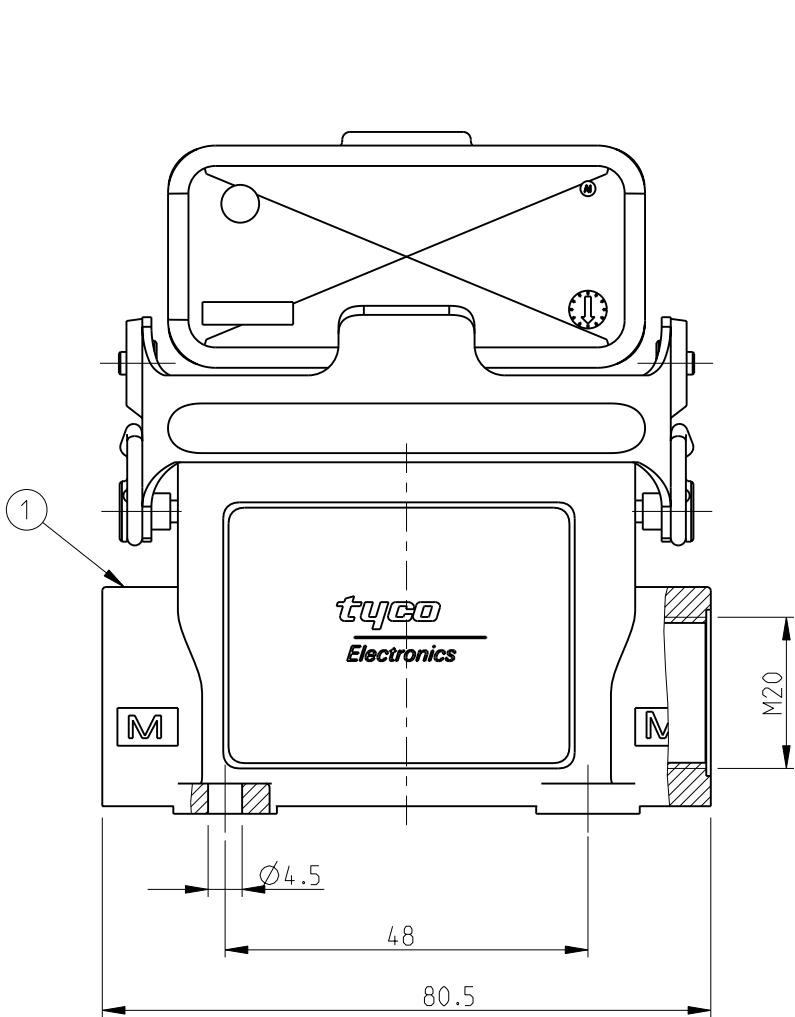
Email & Skype: info@chipsmall.com Web: www.chipsmall.com

Address: A1208, Overseas Decoration Building, #122 Zhenhua RD., Futian, Shenzhen, China



2		1				
LOC	DIST	REVISIONS				
A1	-	P	LTR	DESCRIPTION	DATE	APVD
			B3	ECR-09-015227	17.JUL.2009	AR

- NOTES:
- 1 MATERIAL: SEE TABLE
 - 2 SURFACE: SEE TABLE
 - 3 VARNISH ON THE INSIDE NOT NECESSARY
 - 4 PACKAGING QAUNTITY: 5 PIECES PER BOX



PN 0-2 AS SHOWN

		1		2	
1	-	PROFILE SEAL	NEOPRENE	BLACK	4
1	-	COVER	ALUMINIUM	GREY	3
1	1	CLIP	STEEL	ZINC PLATED	2
1	1	SURFACE MOUNTED HOUSING	ALUMINIUM	GREY	1
0-2	0-1	DESCRIPTION	MATERIAL	SURFACE/COLOR	ITEM NO.
ORDERING TEXT					
HA10.SG-LB.1.M20.Z					
HA10.SGD-LB.1.M20.Z					

THIS DRAWING IS A CONTROLLED DOCUMENT FOR TYCO ELECTRONICS CORPORATION. IT IS SUBJECT TO CHANGE AND THE CONTROLLING ENGINEERING ORGANIZATION SHOULD BE CONTACTED FOR THE LATEST REVISION.		DWN R.SRINIVAS 3/3/2006	Tyco Electronics Tyco Electronics AMP GmbH 53757 Sankt Augustin, Germany		
DIMENSIONS: mm		CHK R.SRINIVAS 3/3/2006			
TOLERANCES UNLESS OTHERWISE SPECIFIED: n.ISO 8015: n.ISO 2768-mH-E: n.DIN 16901-120		APVD T.SCHNURPFIL 3/3/2006	NAME SURFACE MOUNTED HOUSING SERIES HA10, SIDE ENTRY, METRIC		
0 PLC 1 PLC 2 PLC 3 PLC 4 PLC ANGLES FINISH		PRODUCT SPEC - APPLICATION SPEC - WEIGHT -			
MATERIAL 1		2	SIZE A3	CAGE CODE 00779	DRAWING NO C-1103057
			RESTRICTED TO -	SCALE 1:1	SHEET 1 OF 1
				REV B3	