



Chipsmall Limited consists of a professional team with an average of over 10 year of expertise in the distribution of electronic components. Based in Hongkong, we have already established firm and mutual-benefit business relationships with customers from,Europe,America and south Asia,supplying obsolete and hard-to-find components to meet their specific needs.

With the principle of “Quality Parts,Customers Priority,Honest Operation,and Considerate Service”,our business mainly focus on the distribution of electronic components. Line cards we deal with include Microchip,ALPS,ROHM,Xilinx,Pulse,ON,Everlight and Freescale. Main products comprise IC,Modules,Potentiometer,IC Socket,Relay,Connector.Our parts cover such applications as commercial,industrial, and automotives areas.

We are looking forward to setting up business relationship with you and hope to provide you with the best service and solution. Let us make a better world for our industry!



Contact us

Tel: +86-755-8981 8866 Fax: +86-755-8427 6832

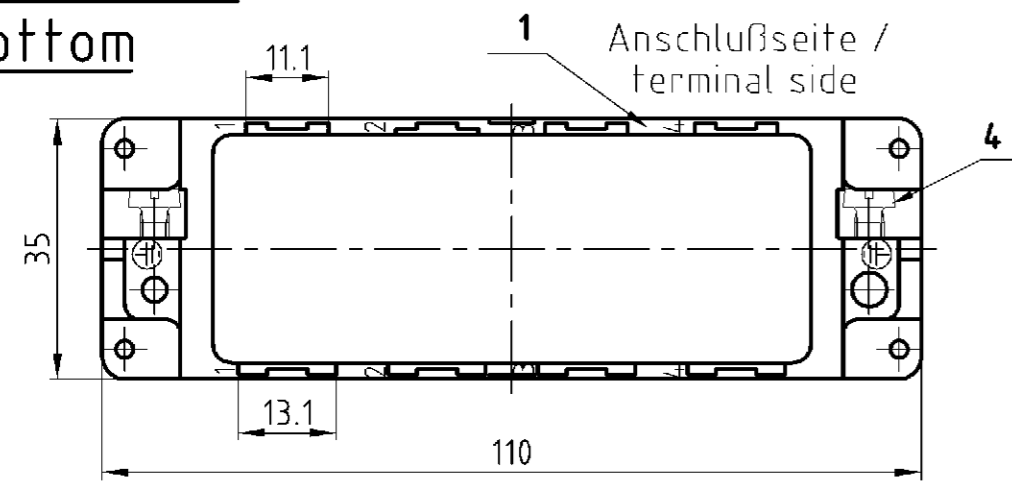
Email & Skype: info@chipsmall.com Web: www.chipsmall.com

Address: A1208, Overseas Decoration Building, #122 Zhenhua RD., Futian, Shenzhen, China

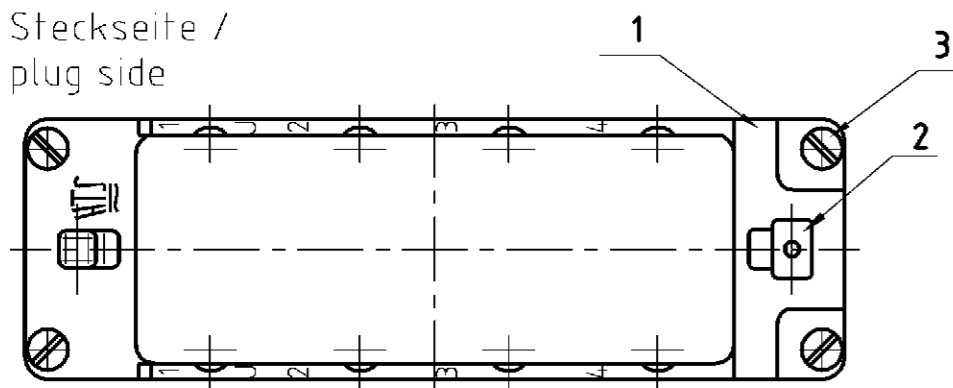


| LOC | DIST | REVISIONS | | | | DATE | DWN | APVD |
|----------------------------|------|--------------|---------------|-------------|--|----------|-----|------|
| | | P | LTR | DESCRIPTION | | | | |
| | | BESCHREIBUNG | | | | | | |
| AI | - | | | | | 01.07.06 | GW | ST |
| PROJEKT NR.: B 91 04 65 | | B2 | ECR-05-006046 | | | | | |

**Unterteil /
bottom**

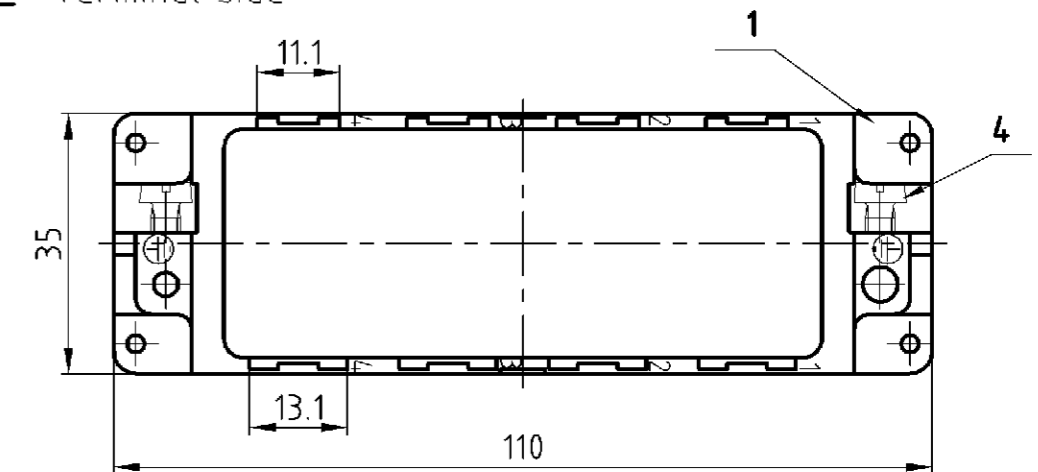


**Steckseite /
plug side**

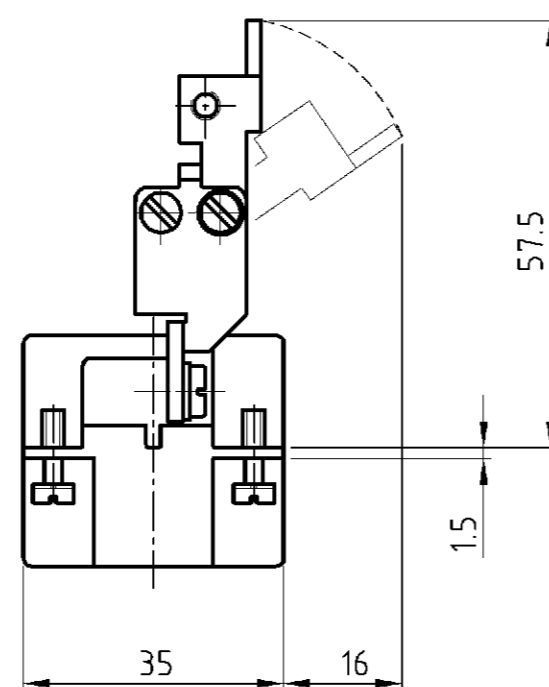
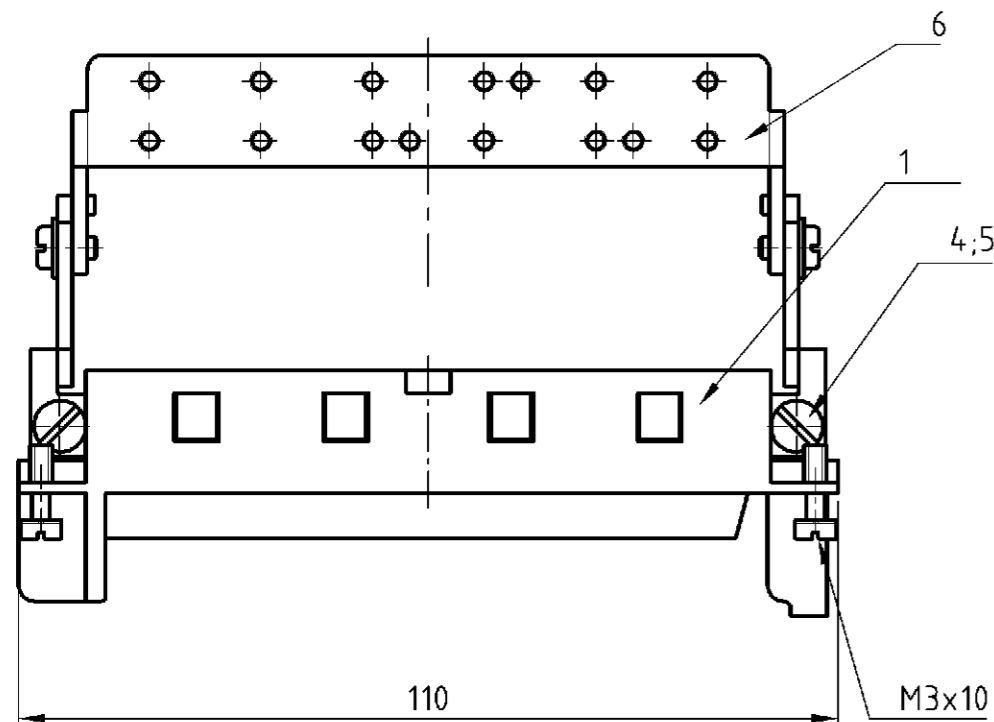
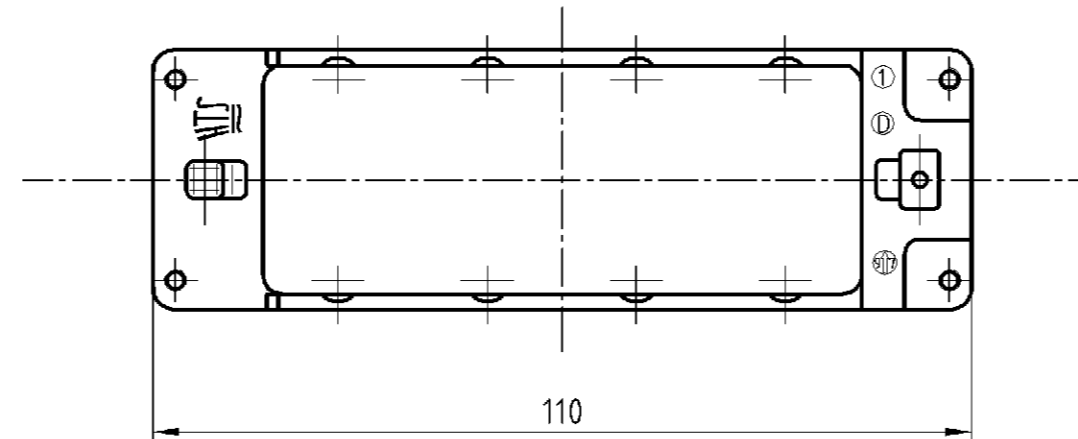
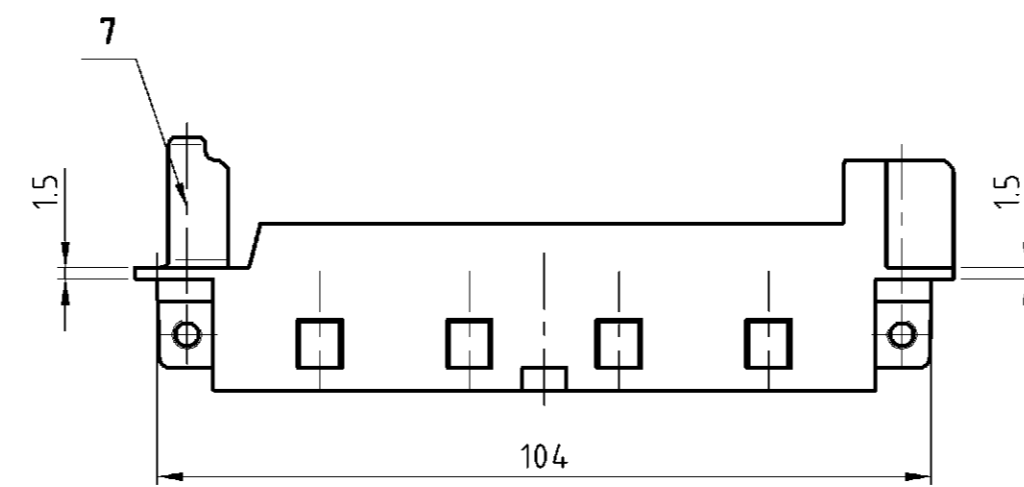
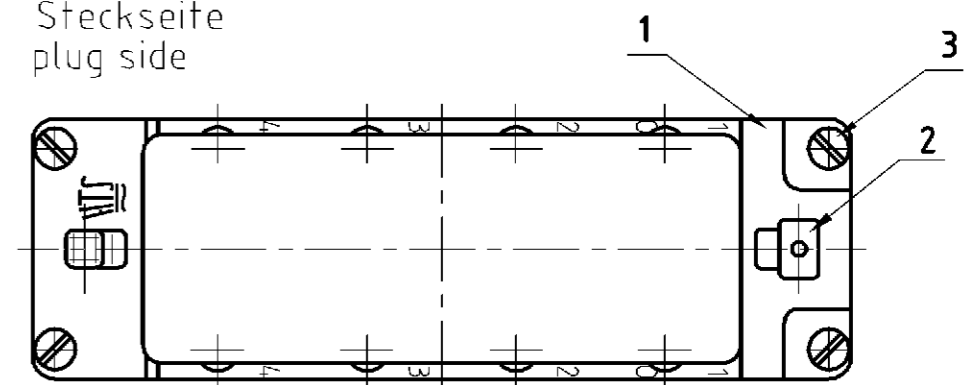


**Oberteil /
upper part**

Anschlußseite
terminal side



**Steckseite
plug side**



| | | | | | | 1 | 2 | | | | | |
|-----------------------|------------------|---------------------|---------------------|---------------------|------------------|---|-----------------------------------|---|---|---|----------------|-----------|
| | | | 1 | | | Modulrahmen Oberteil module frame upper part | Zink-Leg./ zinc alloy | Verzinkt/ tin plated | 7 | Sonder für Griffblech/ special for grip | | |
| | | | 1 | 1 | | Schirmbügel schwenkbar/ screen termination roofing | Stahl/steel | Verzinkt/ tin plated | 6 | | | |
| | | | 2 | 2 | | Federring/ spring lock washer | Stahl/steel | Verzinkt/ tin plated | 5 | DIN 128 - A4 | | |
| 2 | 2 | 2 | 2 | 2 | 2 | Zylinderschraube mit Schlitz/ cylinder screw with slit | Messing/brass | Vernickelt/ nickel plated | 4 | DIN EN ISO 1207 | | |
| 4 | 4 | 4 | 4 | 4 | 4 | Befestigungsschraube/ fixing screw | Stahl/steel | Vernickelt/ nickel plated | 3 | M3x10 | | |
| 1 | 1 | 1 | 1 | 1 | 1 | Erdkontaktfeder/ spring f. grounding cont. | Bronze/ bronze | Vernickelt/ nickel plated | 2 | | | |
| 1 | 1 | | 1 | 1 | 1 | Modulrahmen/ module frame | Zink-Leg./ zinc alloy | Verzinkt/ tin plated | 1 | | | |
| 0-70-60-50-40-30-20-1 | | | | | | DESCRIPTION / BENENNUNG | MATERIAL | SURFACE/COLOR | ITEM NO. Pos. | NOTES / BEMERKUNGEN | | |
| MDL2-GR-U-8-B5-8 | MDL2-GR-O-8-B5-8 | MDL2-GR-O-8/GB-B1-4 | MDL2-GR-U-8/SB-B1-4 | MDL2-GR-O-8/SB-B1-4 | MDL2-GR-U-8-B1-4 | MDL2-GR-O-8-B1-4 | ORDERING TEXT/BESTELTEXT | DWN wroblewski 06.10.2003 CHK Baum 06.10.2003 | APVD - NAME - PRODUCT SPEC PRODUKTSPEZ - APPLICATION SPEC VERARBEITUNGSSPEZ - WEIGHT GEWICHT 110g, 150g CUSTOMER DRAWING | HTS Elektrotechnik 53819 Neunkirchen, Germany MDL- Frame size 8 MDL- Rahmen Gr.8 SIZE A2 CAGE CODE 00779 DRAWING NO. ZEICHNUNGS-NR. 1108780 RESTRICTED TO NUR FUER - | | |
| | | | | | | | DIMENSIONS: DIMENSIONEN: mm | TOLERANCES UNLESS OTHERWISE SPECIFIED ALLGEMEIN TOLERANZEN n ISO 8015 p ISO 2768 - mH - E r DIN 16901 - 14.0 | APPLIC. SPEC VERARBEITUNGSSPEZ - WEIGHT GEWICHT 110g, 150g CUSTOMER DRAWING | DATE 06.10.2003 | REV B2 | |
| | | | | | | | 0 PLC 1 PLC 2 PLC 3 PLC | ANGLES / WINKEL FINISH / OBERFLÄCHE / FARBE | MASSSTAB 1:1 | BLATT 1 | OF VON 1 | REV B2 |