



Chipsmall Limited consists of a professional team with an average of over 10 year of expertise in the distribution of electronic components. Based in Hongkong, we have already established firm and mutual-benefit business relationships with customers from,Europe,America and south Asia,supplying obsolete and hard-to-find components to meet their specific needs.

With the principle of "Quality Parts,Customers Priority,Honest Operation,and Considerate Service",our business mainly focus on the distribution of electronic components. Line cards we deal with include Microchip,ALPS,ROHM,Xilinx,Pulse,ON,Everlight and Freescale. Main products comprise IC,Modules,Potentiometer,IC Socket,Relay,Connector.Our parts cover such applications as commercial,industrial, and automotives areas.

We are looking forward to setting up business relationship with you and hope to provide you with the best service and solution. Let us make a better world for our industry!



Contact us

Tel: +86-755-8981 8866 Fax: +86-755-8427 6832

Email & Skype: info@chipsmall.com Web: www.chipsmall.com

Address: A1208, Overseas Decoration Building, #122 Zhenhua RD., Futian, Shenzhen, China





Thread Drive Pack

SKU: 110990020

(images/product/Drive Pack.jpg)

Description

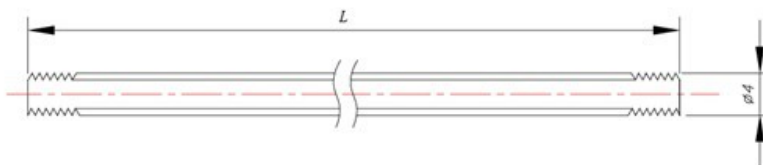
This pack included two Fully Threaded Rods, two Linear Motion Shaft, a Universal Joint and a Thread Drive Beam.

1. Fully Threaded Rod M4x192mm/M4x280mm

Features:

- Made of steel, zinc plated.
- Length: 192mm/280mm

Size Charts(mm):



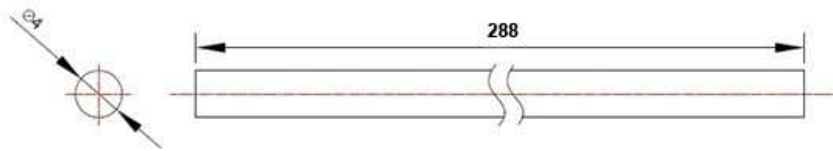
2. Linear Motion Shaft 4x288mm

Features:

- Made of tainless Steel
- Can drill into 4mm holes. Compatible with Thread Drive Beam

- Length: 288mm

Size Charts(mm):

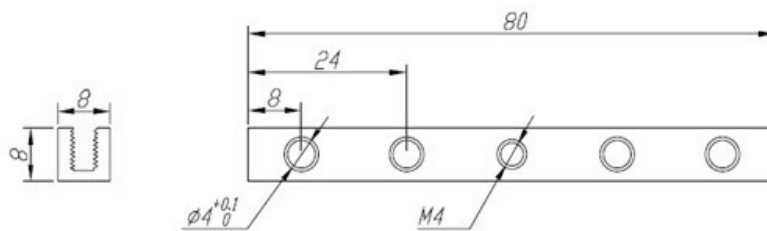


3.Thread Drive Beam

Features:

- Made from 6061 aluminum extrusion, anodized surface. Excellent strength and twist resistance.
- With thread hole in the middle that compatible with the Fully Threaded Rod.
- Other holes without thread can be drilled for 4mm shaft.
- Threaded slot enables easy and flexible connection.
- Cross-sectional area 8x8mm, length 80mm.

Size Charts(mm):

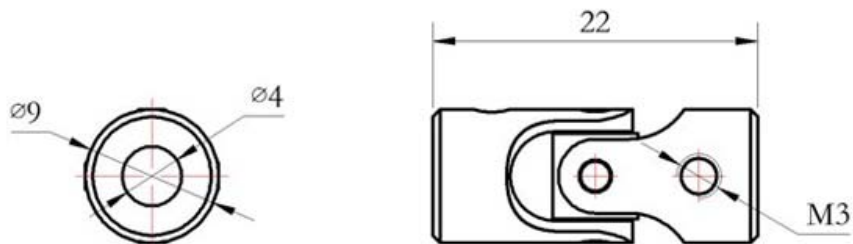


4. Universal Joint 4x4mm

Features:

- Material: stainless steel
- Max deflection angle: 45°
- Size: D9* ϕ 4* ϕ 4*M3*L22mm
- 2 Headless Set Screw included

Size Charts(mm):



Part list:

- 1x Fully Threaded Rod M4x192mm
- 1x Fully Threaded Rod M4x280mm
- 2x Linear Motion Shaft 4x288mm
- 1x Thread Drive Beam
- 1x Universal Joint 4x4mm
- 2x Headless Set Screw M3x5

Support

If you have any further question for technical support, please contact waker@makeblock.cc (<mailto:waker@makeblock.cc>) or visit forum (<http://forum.makeblock.cc/category/makeblock-products>) of Makeblock.