



Chipsmall Limited consists of a professional team with an average of over 10 year of expertise in the distribution of electronic components. Based in Hongkong, we have already established firm and mutual-benefit business relationships with customers from,Europe,America and south Asia,supplying obsolete and hard-to-find components to meet their specific needs.

With the principle of “Quality Parts,Customers Priority,Honest Operation,and Considerate Service”,our business mainly focus on the distribution of electronic components. Line cards we deal with include Microchip,ALPS,ROHM,Xilinx,Pulse,ON,Everlight and Freescale. Main products comprise IC,Modules,Potentiometer,IC Socket,Relay,Connector.Our parts cover such applications as commercial,industrial, and automotives areas.

We are looking forward to setting up business relationship with you and hope to provide you with the best service and solution. Let us make a better world for our industry!



## Contact us

Tel: +86-755-8981 8866 Fax: +86-755-8427 6832

Email & Skype: info@chipsmall.com Web: www.chipsmall.com

Address: A1208, Overseas Decoration Building, #122 Zhenhua RD., Futian, Shenzhen, China



# Solar Man Robot

Components list is on PAGE 2.

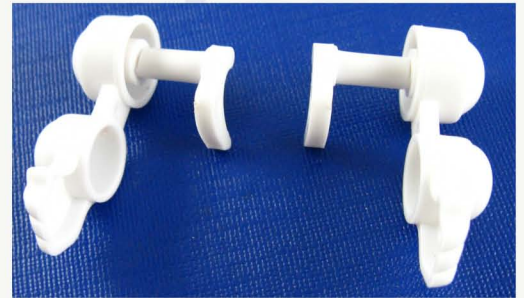
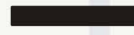
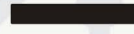
1



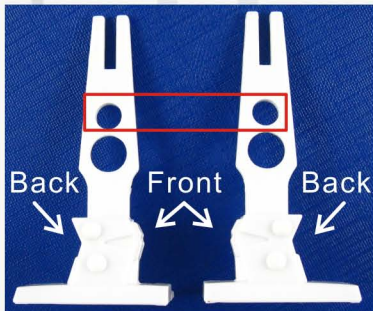
Assemble right arm



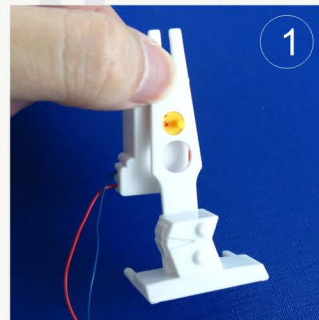
Assemble left arm



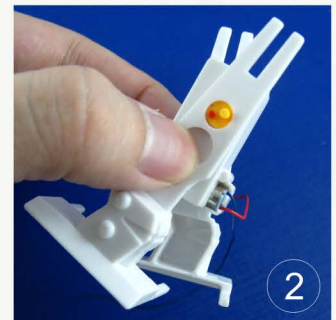
2



Please note to verify front and back, the holes in red rectangle are for this assembling step.

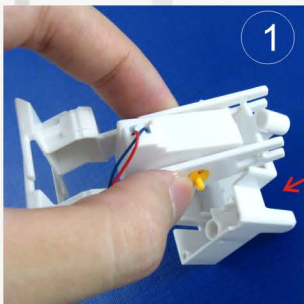


Install left leg

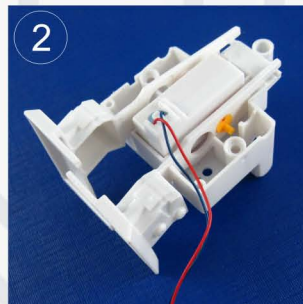


Install right leg

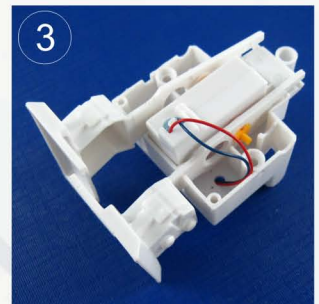
3



Firstly as picture shown, assemble the top of leg to the shaft of back cover.

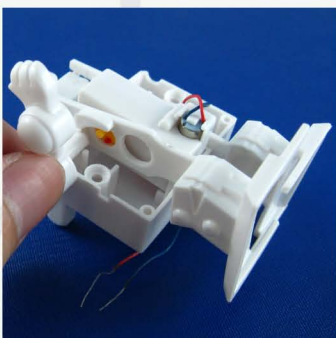


Then fix motor and both legs.

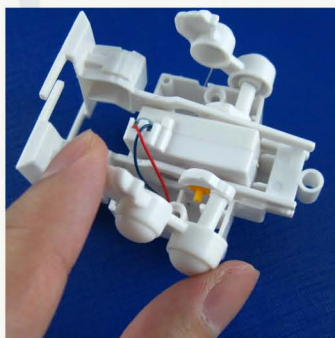


Follow the picture, get the motor wire through out of the hole

4

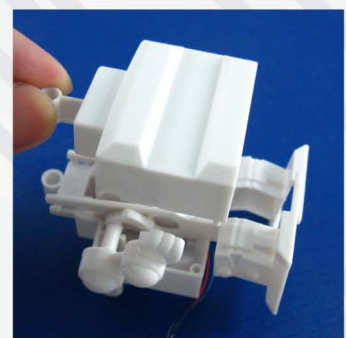


As picture shown, install the right arm to the motor shaft.

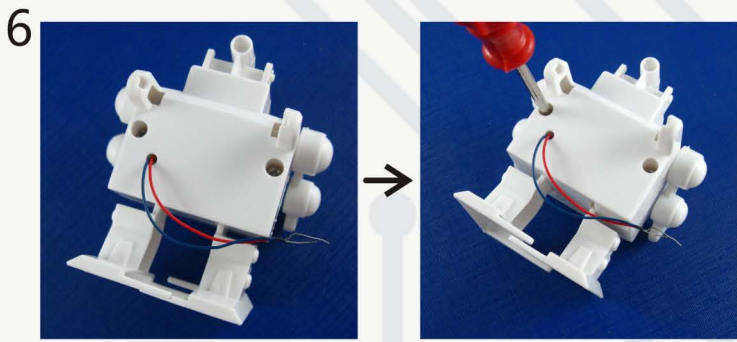


Install the left arm the same as right arm.

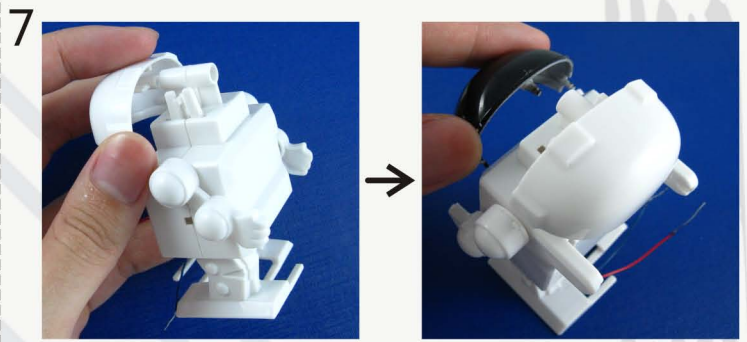
5



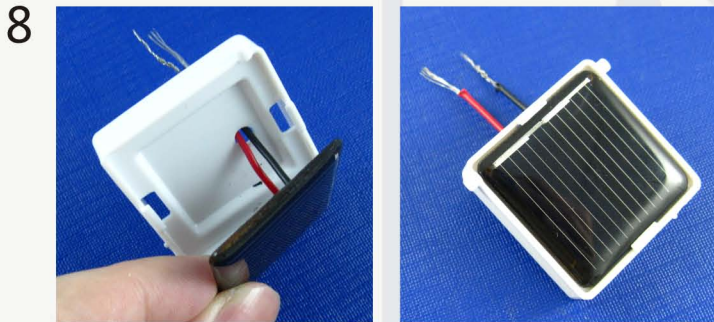
Install the front cover.



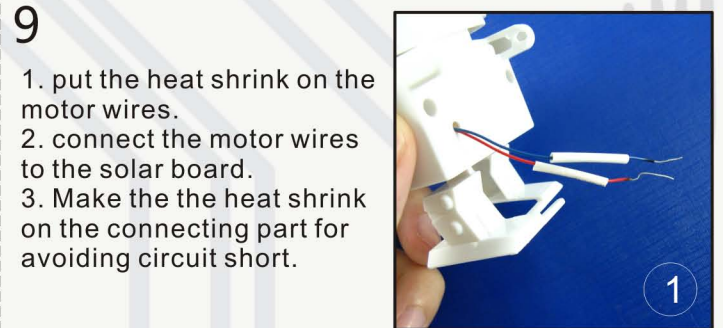
Fix the front and back covers with screws.



Assemble the front and back covers of head.



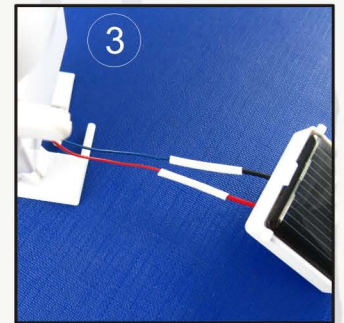
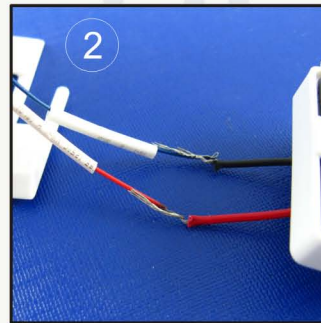
Install the solar board.



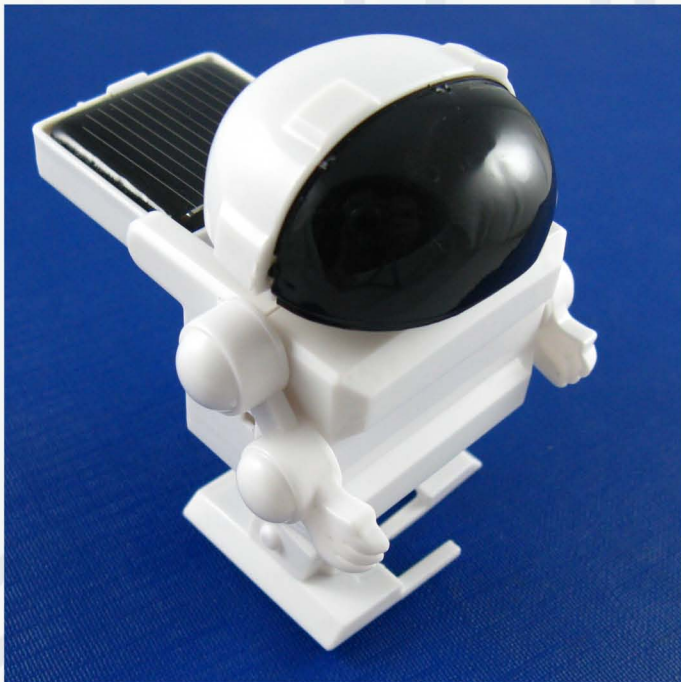
1. put the heat shrink on the motor wires.
2. connect the motor wires to the solar board.
3. Make the the heat shrink on the connecting part for avoiding circuit short.



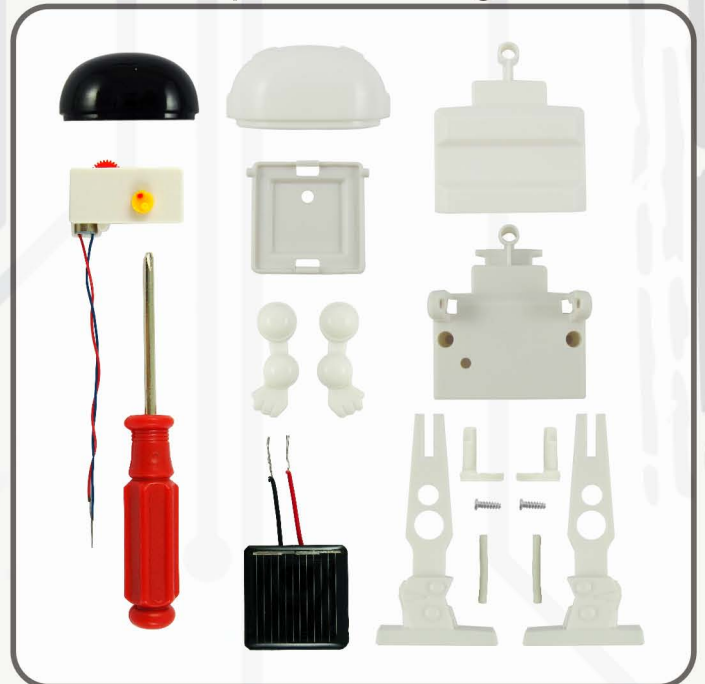
Install the solar part as picture shown.



### Assembling finished



### Components diagram



### Components list:

Front cover\*1, Back cover\*1, Left leg\*1, Right leg\*1, Left arm\*1, Right arm\*1, Left shoulder lever\*1, Right shoulder lever\*1, Front cover of head (black)\*1, Back cover of head\*1, Solar board\*1, Solar board holder\*1, Motor\*1, Heat shrink\*2, Screw\*2 (M2.2\*6), Screwdriver\*1.