



Chipsmall Limited consists of a professional team with an average of over 10 year of expertise in the distribution of electronic components. Based in Hongkong, we have already established firm and mutual-benefit business relationships with customers from,Europe,America and south Asia,supplying obsolete and hard-to-find components to meet their specific needs.

With the principle of "Quality Parts,Customers Priority,Honest Operation,and Considerate Service",our business mainly focus on the distribution of electronic components. Line cards we deal with include Microchip,ALPS,ROHM,Xilinx,Pulse,ON,Everlight and Freescale. Main products comprise IC,Modules,Potentiometer,IC Socket,Relay,Connector.Our parts cover such applications as commercial,industrial, and automotives areas.

We are looking forward to setting up business relationship with you and hope to provide you with the best service and solution. Let us make a better world for our industry!



Contact us

Tel: +86-755-8981 8866 Fax: +86-755-8427 6832

Email & Skype: info@chipsmall.com Web: www.chipsmall.com

Address: A1208, Overseas Decoration Building, #122 Zhenhua RD., Futian, Shenzhen, China



Retro Game Kit for Double Players

SKU 110990986

Description



This Retro Game Kit fit for maker and anyone who want to make a home retro game arcade by self.

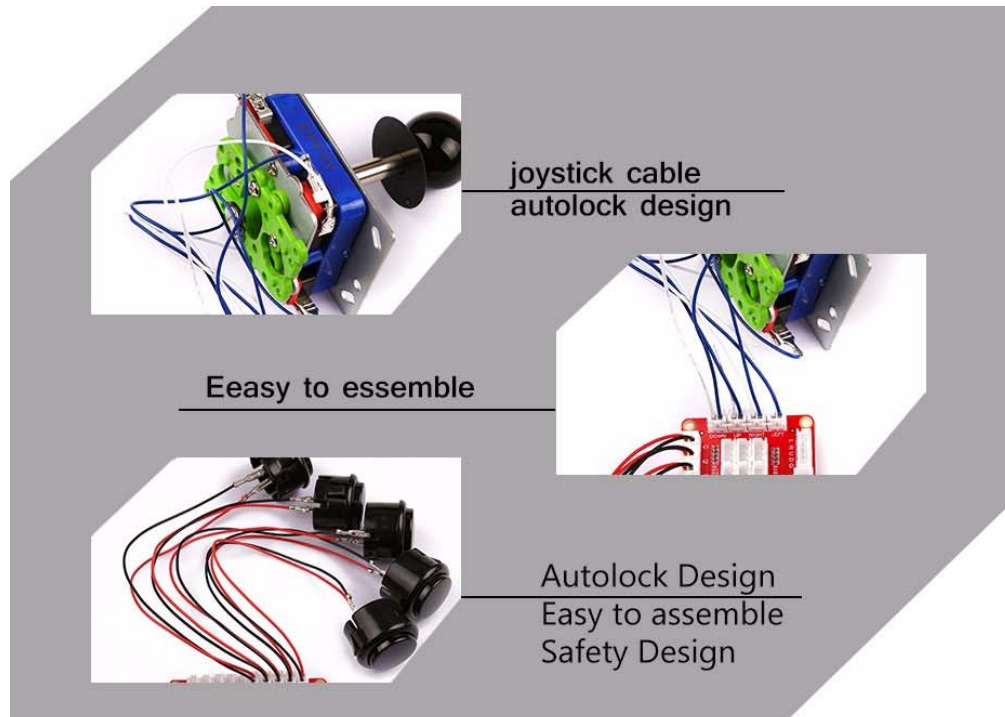
And the Double players means you can play games with your kids or your friends

It's easy to assemble and you can hook up it to your PC or laptop, even raspberry Pi with RetroPie Operating System.

And it contains a small amplifier with it thus you do not need to purchase another amplifier, just hookup the 3W speakers, it will be a boom box.

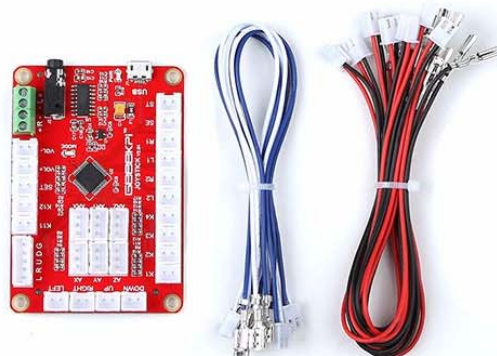
Features

- MicroUSB port • 3.5mm Audio jack • Volume control port • Easy to setup • Zero delay • Plug & Play



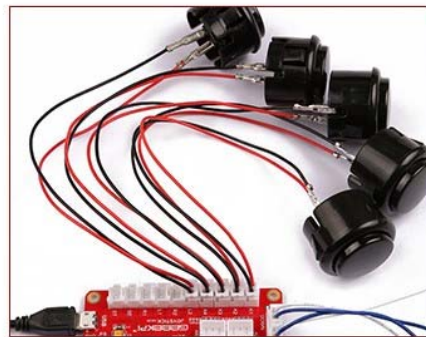
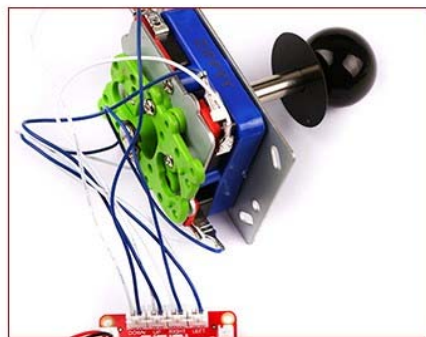
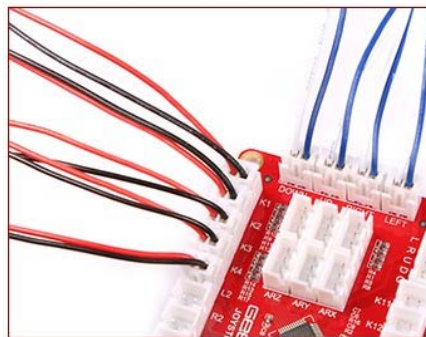
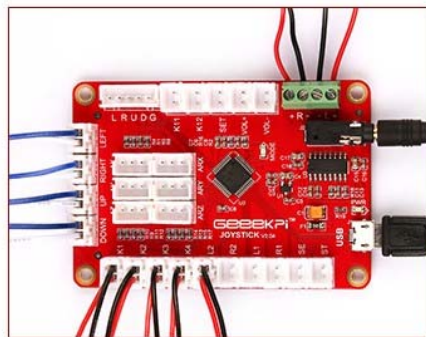
How to assemble it

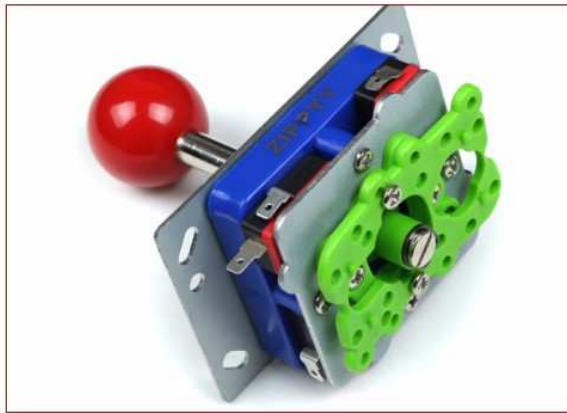
1. Hook up the blue & white cable to Joystick's trigger pin and hook up the cable to the USB controller board.
2. Hook up the red & black cable to the buttons and hook up the cable to the USB controller board.



Application

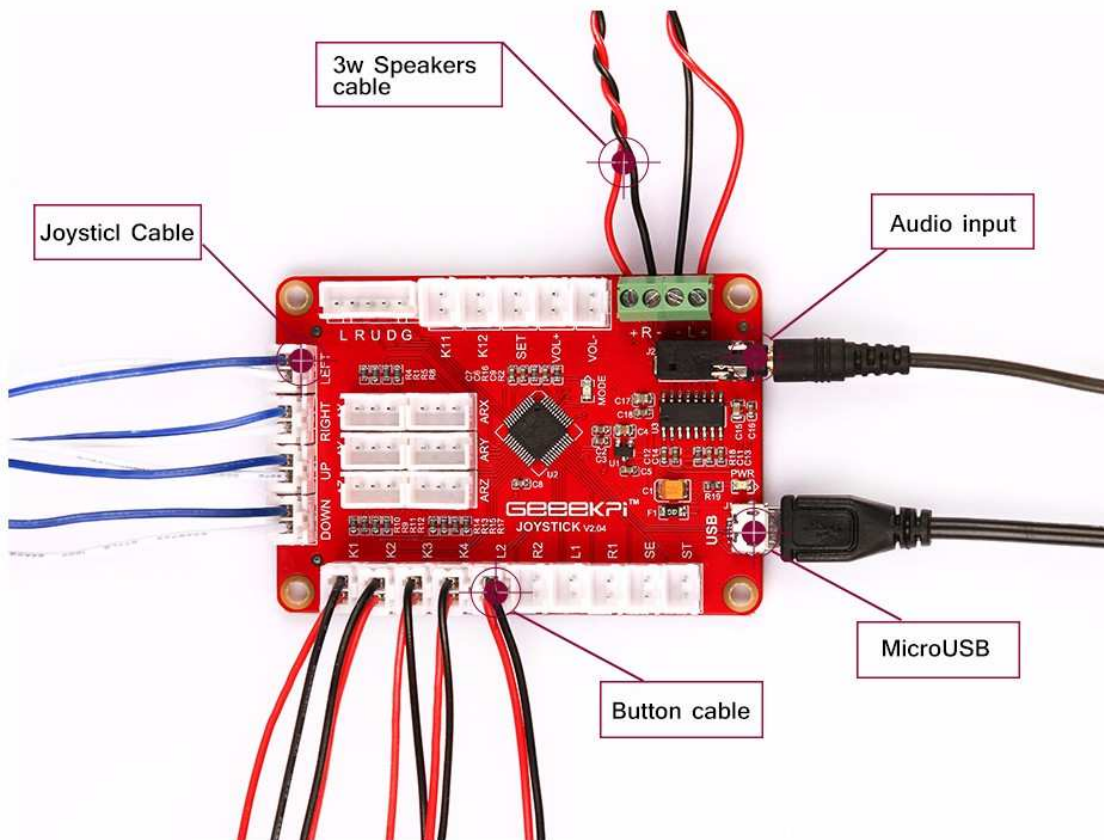
Easy to assemble Beautiful Outlook Fast response button



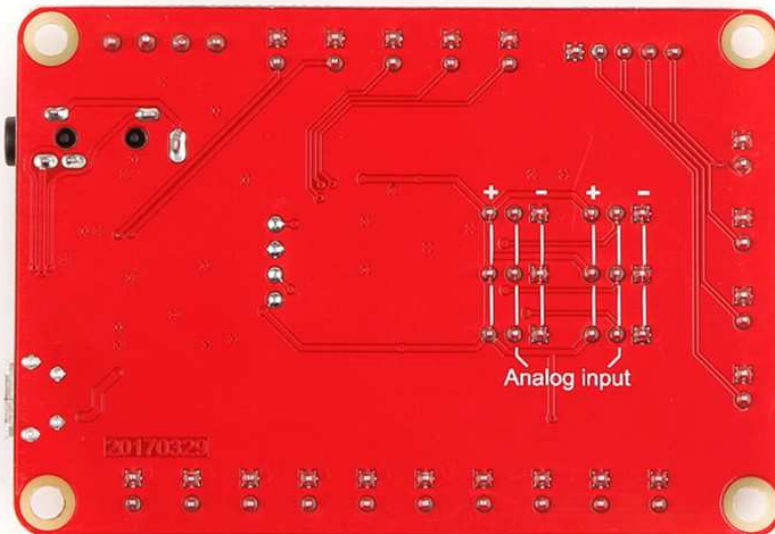
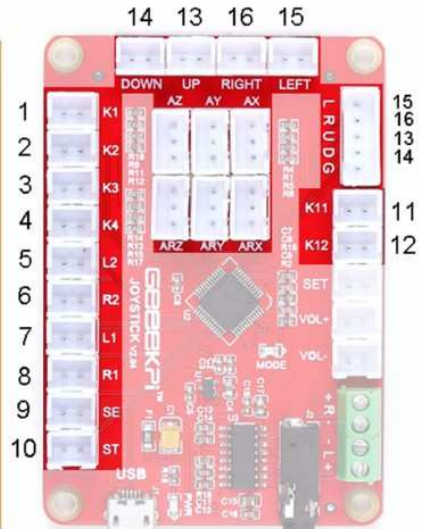
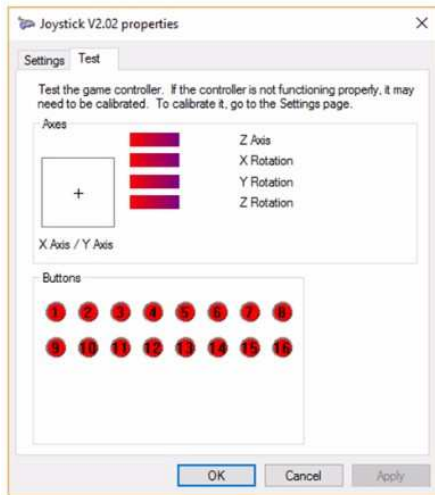
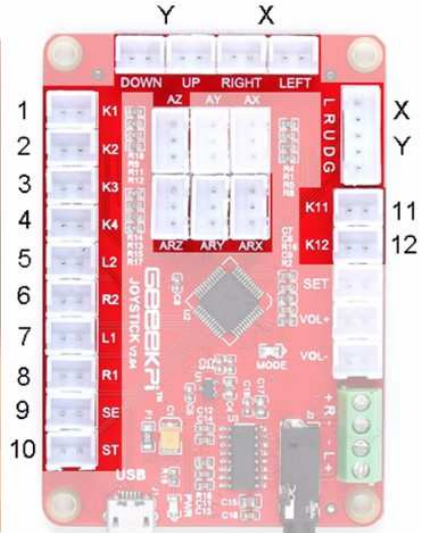
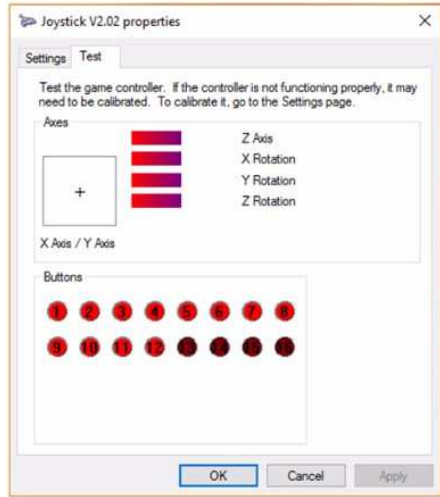


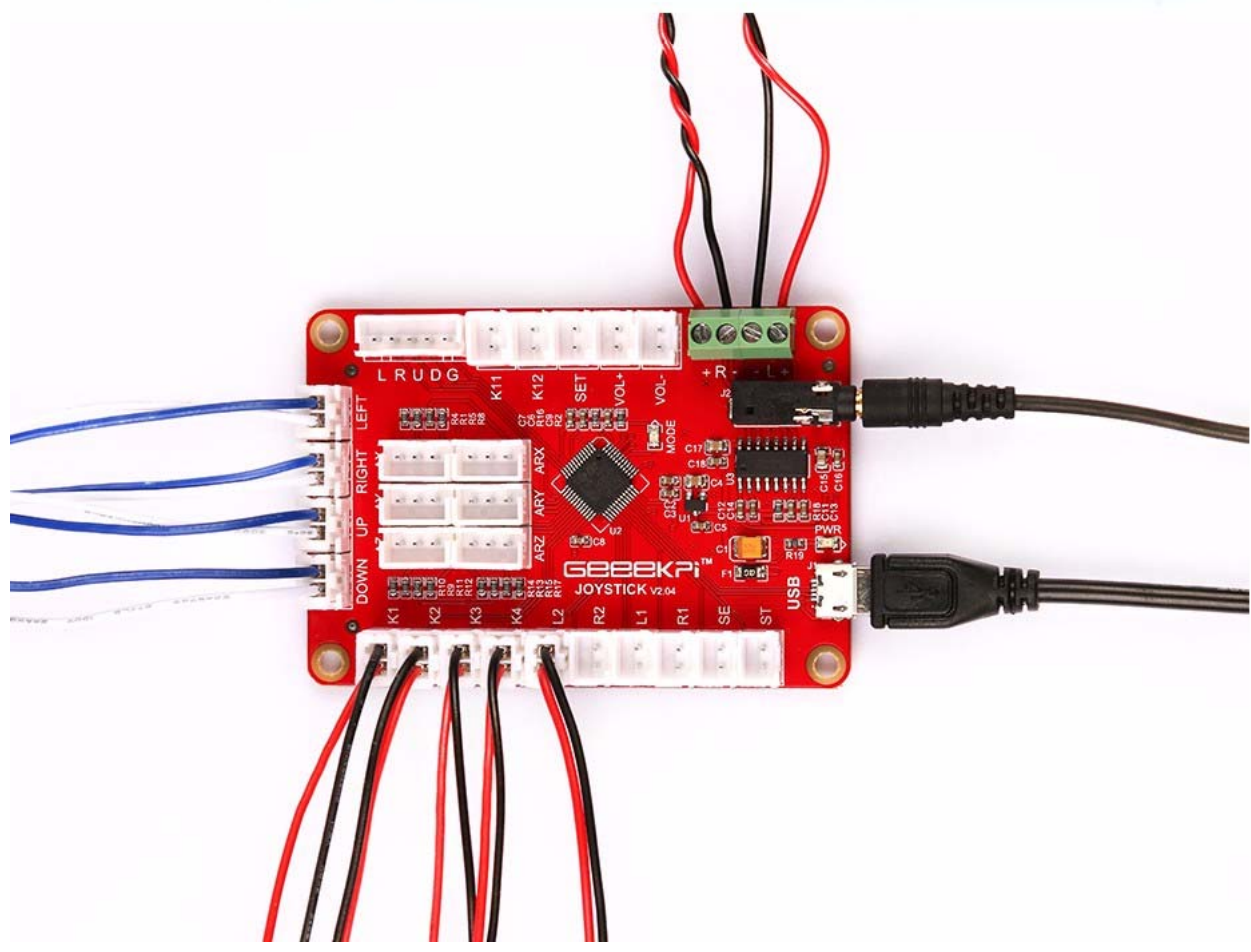
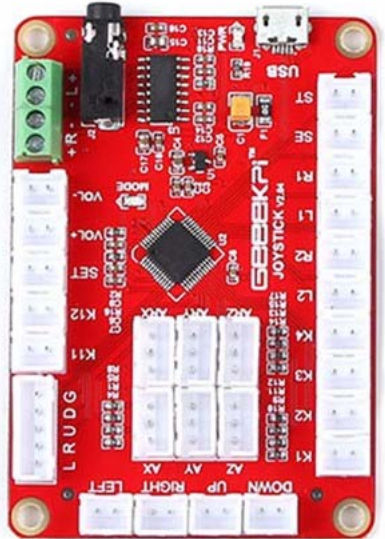
All directions joystick
Elegant workmanship
Easy to assemble
High-quality steel stick
High speed response

Steel platform offers more stabilization
more faster and more safer when
mount into your Arcade



FUNCTION







Technical Details

Dimensions	210mm x 110mm x 140mm
Weight	G.W 1000g
Battery	Exclude

Part List

USB Joystick Controller Board	2
High quality Joystick	2
Blue & White cable wire	8

Red & Black cable wire	20
Button (Color: Red/Black)	20