



Chipsmall Limited consists of a professional team with an average of over 10 year of expertise in the distribution of electronic components. Based in Hongkong, we have already established firm and mutual-benefit business relationships with customers from,Europe,America and south Asia,supplying obsolete and hard-to-find components to meet their specific needs.

With the principle of “Quality Parts,Customers Priority,Honest Operation,and Considerate Service”,our business mainly focus on the distribution of electronic components. Line cards we deal with include Microchip,ALPS,ROHM,Xilinx,Pulse,ON,Everlight and Freescale. Main products comprise IC,Modules,Potentiometer,IC Socket,Relay,Connector.Our parts cover such applications as commercial,industrial, and automotives areas.

We are looking forward to setting up business relationship with you and hope to provide you with the best service and solution. Let us make a better world for our industry!



## Contact us

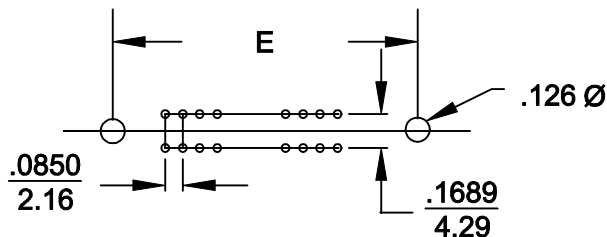
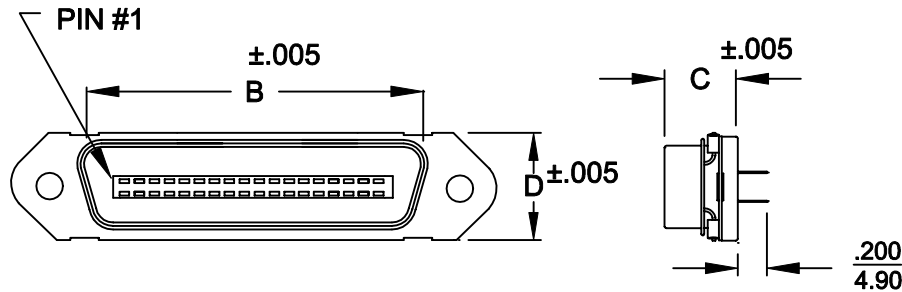
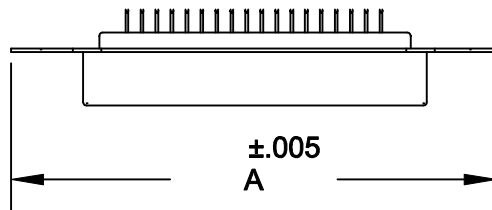
Tel: +86-755-8981 8866 Fax: +86-755-8427 6832

Email & Skype: info@chipsmall.com Web: www.chipsmall.com

Address: A1208, Overseas Decoration Building, #122 Zhenhua RD., Futian, Shenzhen, China



DESCRIPTION: .085" RIBBON SOLDER CUP



	A	B	C	D	E
14	1.729	.992	.502	.602	1.417
	43.92	25.20	12.75	15.30	35.99
24	2.154	1.417	.502	.602	1.842
	54.71	36.00	12.75	15.30	46.79
36	2.665	1.925	.502	.602	2.352
	67.69	48.90	12.75	15.30	59.74
50	3.259	2.538	.502	.602	2.947
	82.78	64.47	12.75	15.30	74.85

111-XXX-103-001

SERIES \_\_\_\_\_

POSITIONS \_\_\_\_\_

014 \_\_\_\_\_

024 \_\_\_\_\_

036 \_\_\_\_\_

050 \_\_\_\_\_

GENDER \_\_\_\_\_

1 = MALE \_\_\_\_\_

TERMINATION \_\_\_\_\_

3 = SOLDER CUP \_\_\_\_\_

SHELL PLATING \_\_\_\_\_

3 = NICKEL \_\_\_\_\_

HARDWARE OPTIONS \_\_\_\_\_

00 = NO HARDWARE \_\_\_\_\_

PLATING OPTIONS \_\_\_\_\_

01 = GOLD FLASH \_\_\_\_\_

**MATERIALS:**

INSULATOR: GLASS-FILLED THERMOPLASTIC  
UL RATED 94V-0

CONTACTS: COPPER ALLOY

ELECTRICALS:


CONTACT CURRENT RATING: 5 AMPS

DIELECTRIC WITHSTANDING VOLTAGE: AC 1200 R.M.S.

INSULATION RESISTANCE: 1000 mohms MINIMUM AT 500V DC

CONTACT RESISTANCE: 30 mOHMS MAXIMUM

OPERATING TEMPERATURE: -55°C TO +125°C

	THESE DRAWINGS AND SPECIFICATIONS ARE THE PROPERTY OF NorComp AND SHALL NOT BE REPRODUCED, COPIED OR USED AS THE BASIS FOR THE MANUFACTURE OF SALE OF APPARATUS WITHOUT WRITTEN PERMISSION.		DRAWN: WAYNE ROBBINS	DATE: 8-23-98
			CHECKED: PAM JENKINS	DATE: 8-24-98
<h1>NorComp</h1>		SCALE:	SHEET 1 OF 1	REV 5
		DWG NO. 111-XXX-103-001		