



Chipsmall Limited consists of a professional team with an average of over 10 year of expertise in the distribution of electronic components. Based in Hongkong, we have already established firm and mutual-benefit business relationships with customers from,Europe,America and south Asia,supplying obsolete and hard-to-find components to meet their specific needs.

With the principle of “Quality Parts,Customers Priority,Honest Operation,and Considerate Service”,our business mainly focus on the distribution of electronic components. Line cards we deal with include Microchip,ALPS,ROHM,Xilinx,Pulse,ON,Everlight and Freescale. Main products comprise IC,Modules,Potentiometer,IC Socket,Relay,Connector.Our parts cover such applications as commercial,industrial, and automotives areas.

We are looking forward to setting up business relationship with you and hope to provide you with the best service and solution. Let us make a better world for our industry!



## Contact us

Tel: +86-755-8981 8866 Fax: +86-755-8427 6832

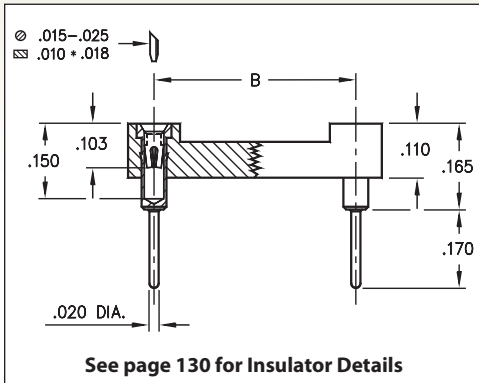
Email & Skype: info@chipsmall.com Web: www.chipsmall.com

Address: A1208, Overseas Decoration Building, #122 Zhenhua RD., Futian, Shenzhen, China

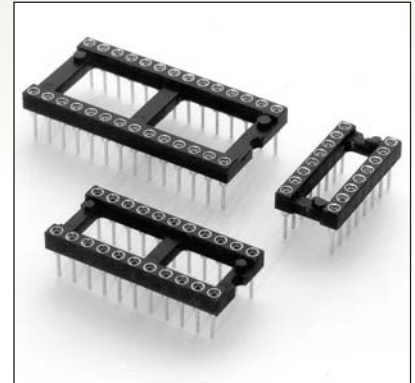


# DUAL-IN-LINE SOCKETS

## SERIES 111 • LONG SOLDER TAIL FOR MULTI-LAYER PCB • OPEN FRAME



- DIP sockets with increased solder tail length of .170", allowing application on multi-layer PCBs up to .139" thick
- Hi-Rel, 4-finger BeCu #30 contact is rated at 3 amps. See page 253 for details
- Series 111 uses MM #0134 pins. See page 165 for details
- Insulators are high temperature thermoplastic, suitable for all soldering operations
- For Electrical, Mechanical and Environmental Data, see page 264 for details



Total number of pins				Quantity per tube	ORDERING INFORMATION			
	A	B	C					
10	0.5	0.2	0.3	40	111-XX-210-41-001000			
4	0.2	0.3	0.4	102	111-XX-304-41-001000			
6	0.3	0.3	0.4	67	111-XX-306-41-001000			
8	0.4	0.3	0.4	50	111-XX-308-41-001000			
10	0.5	0.3	0.4	40	111-XX-310-41-001000			
14	0.7	0.3	0.4	28	111-XX-314-41-001000			
16	0.8	0.3	0.4	25	111-XX-316-41-001000			
18	0.9	0.3	0.4	22	111-XX-318-41-001000			
20	1.0	0.3	0.4	20	111-XX-320-41-001000			
22	1.1	0.3	0.4	18	111-XX-322-41-001000			
24	1.2	0.3	0.4	16	111-XX-324-41-001000			
28	1.4	0.3	0.4	14	111-XX-328-41-001000			
20	1.0	0.4	0.5	20	111-XX-420-41-001000			
22	1.1	0.4	0.5	18	111-XX-422-41-001000			
24	1.2	0.4	0.5	16	111-XX-424-41-001000			
28	1.4	0.4	0.5	14	111-XX-428-41-001000			
32	1.6	0.4	0.5	12	111-XX-432-41-001000			
24	1.2	0.6	0.7	16	111-XX-624-41-001000			
28	1.4	0.6	0.7	14	111-XX-628-41-001000			
32	1.6	0.6	0.7	12	111-XX-632-41-001000			
36	1.8	0.6	0.7	11	111-XX-636-41-001000			
40	2.0	0.6	0.7	10	111-XX-640-41-001000			
42	2.1	0.6	0.7	9	111-XX-642-41-001000			
48	2.4	0.6	0.7	8	111-XX-648-41-001000			
50	2.5	0.6	0.7	8	111-XX-650-41-001000			
52	2.6	0.6	0.7	7	111-XX-652-41-001000			
50	2.5	0.9	1.0	8	111-XX-950-41-001000			
52	2.6	0.9	1.0	7	111-XX-952-41-001000			
64	3.2	0.9	1.0	6	111-XX-964-41-001000			
SPECIFY PLATING CODE XX =					91	93	41 ◆	43 ◆
Sleeve (Pin)					200 μ" Sn/Pb	200 μ" Sn/Pb	200 μ" Sn	200 μ" Sn
Contact (Clip)					10 μ" Au	30 μ" Au	10 μ" Au	30 μ" Au

XX=Plating Code  
See Below

RoHS-2  
2011/65/EU

