



Chipsmall Limited consists of a professional team with an average of over 10 year of expertise in the distribution of electronic components. Based in Hongkong, we have already established firm and mutual-benefit business relationships with customers from,Europe,America and south Asia,supplying obsolete and hard-to-find components to meet their specific needs.

With the principle of “Quality Parts,Customers Priority,Honest Operation,and Considerate Service”,our business mainly focus on the distribution of electronic components. Line cards we deal with include Microchip,ALPS,ROHM,Xilinx,Pulse,ON,Everlight and Freescale. Main products comprise IC,Modules,Potentiometer,IC Socket,Relay,Connector.Our parts cover such applications as commercial,industrial, and automotives areas.

We are looking forward to setting up business relationship with you and hope to provide you with the best service and solution. Let us make a better world for our industry!



Contact us

Tel: +86-755-8981 8866 Fax: +86-755-8427 6832

Email & Skype: info@chipsmall.com Web: www.chipsmall.com

Address: A1208, Overseas Decoration Building, #122 Zhenhua RD., Futian, Shenzhen, China



High Current Chokes

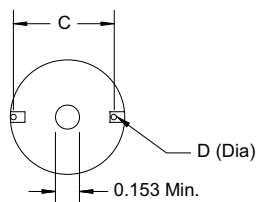
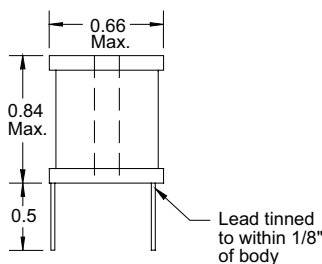
Special Features

- Very high current capacity
- Low DCR
- Epoxy coated ferrite bobbin core
- VW-1 rated shrink tubing to cover winding
- Self-leaded
- Fixed lead spacing
- Center hole for mechanical mounting
- Dielectric withstanding voltage:
2500 Vrms terminal to shrink tube cover;
1000 Vrms terminal to core
- Operating temperature -55 to +105 °C
- Magnetic Wire: Polyester, 155 °C rated

Notes

* Rated current to cause 50 °C max. temperature rise and 5 % max. inductance drop

† RoHS Directive 2002/95/EC Jan 27 2003 including Annex.



Note: Major diameter of #6 screw = 0.138 "

Dimensions: Inches

1110 Series					
Part Number	L (μH) ±20 % @ 1 KHz	DCR Ω Max.	I, dc* (A)	Dim. C Approx.	Dim. D Nom.
1110-1R0M-RC	1.0	0.003	9	0.55	0.049
1110-1R2M-RC	1.2	0.003	9	0.55	0.049
1110-1R5M-RC	1.5	0.004	9	0.55	0.049
1110-1R8M-RC	1.8	0.004	9	0.55	0.049
1110-2R2M-RC	2.2	0.005	9	0.55	0.049
1110-2R7M-RC	2.7	0.005	9	0.55	0.049
1110-3R3M-RC	3.3	0.005	9	0.55	0.049
1110-3R9M-RC	3.9	0.006	9	0.55	0.049
1110-4R7M-RC	4.7	0.007	9	0.55	0.049
1110-5R6M-RC	5.6	0.007	9	0.55	0.049
1110-6R8M-RC	6.8	0.008	9	0.55	0.049
1110-8R2M-RC	8.2	0.009	9	0.55	0.049
± 10 %					
1110-100K-RC	10	0.010	9	0.55	0.049
1110-120K-RC	12	0.011	9	0.55	0.049
1110-150K-RC	15	0.015	7.2	0.53	0.043
1110-180K-RC	18	0.016	7.2	0.53	0.043
1110-220K-RC	22	0.020	5.5	0.53	0.043
1110-270K-RC	27	0.030	4.5	0.53	0.039
1110-330K-RC	33	0.040	4	0.53	0.037
1110-390K-RC	39	0.046	4	0.53	0.035
1110-470K-RC	47	0.062	2.8	0.53	0.032
1110-560K-RC	56	0.069	2.8	0.53	0.032
1110-680K-RC	68	0.077	2.8	0.50	0.032
1110-820K-RC	82	0.083	2.8	0.50	0.032
1110-101K-RC	100	0.095	2.8	0.50	0.030
1110-121K-RC	120	0.127	2	0.50	0.029
1110-151K-RC	150	0.181	1.6	0.50	0.029
1110-181K-RC	180	0.217	1.6	0.50	0.025
1110-221K-RC	220	0.240	1.6	0.50	0.025
1110-271K-RC	270	0.300	1.6	0.47	0.020
1110-331K-RC	330	0.336	1.3	0.47	0.020
1110-391K-RC	390	0.460	1	0.47	0.020
1110-471K-RC	470	0.636	0.8	0.47	0.020
1110-561K-RC	560	0.696	0.8	0.47	0.020

"-RC" suffix indicates RoHS compliance.