



Chipsmall Limited consists of a professional team with an average of over 10 year of expertise in the distribution of electronic components. Based in Hongkong, we have already established firm and mutual-benefit business relationships with customers from,Europe,America and south Asia,supplying obsolete and hard-to-find components to meet their specific needs.

With the principle of "Quality Parts,Customers Priority,Honest Operation,and Considerate Service",our business mainly focus on the distribution of electronic components. Line cards we deal with include Microchip,ALPS,ROHM,Xilinx,Pulse,ON,Everlight and Freescale. Main products comprise IC,Modules,Potentiometer,IC Socket,Relay,Connector.Our parts cover such applications as commercial,industrial, and automotives areas.

We are looking forward to setting up business relationship with you and hope to provide you with the best service and solution. Let us make a better world for our industry!



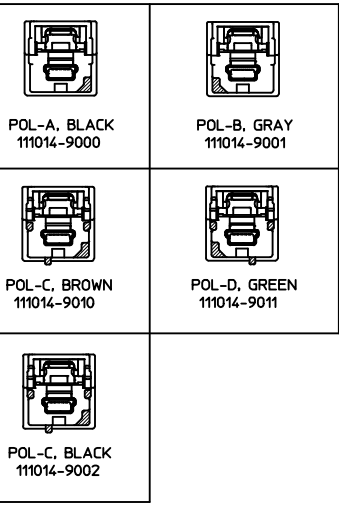
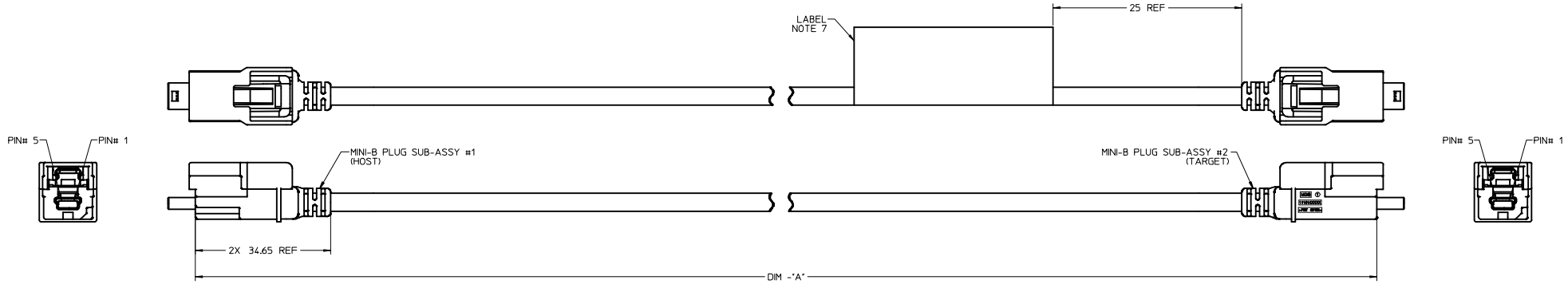
Contact us

Tel: +86-755-8981 8866 Fax: +86-755-8427 6832

Email & Skype: info@chipsmall.com Web: www.chipsmall.com

Address: A1208, Overseas Decoration Building, #122 Zhenhua RD., Futian, Shenzhen, China





| MOLEX MAT. NO. | MINI-B POLARIZATION | | DIM "A" | CUSTOMER PART NO. |
|----------------|-----------------------|-------------------------|---------|-------------------|
| | MINI-B PLUG #1 (HOST) | MINI-B PLUG #2 (TARGET) | | |
| 111014-5000 | A | A | 500±10 | PP207013 |
| 111014-5001 | A | B | 500±10 | |
| 111014-5003 | B | B | 500±10 | |
| 111014-5016 | B | B | 2620±10 | |
| 111014-5017 | A | A | 1500±10 | |
| 111014-5018 | A | B | 1000±10 | |
| 111014-5019 | A | B | 1240±10 | |
| 111014-5021 | A | B | 570±10 | |
| 111014-5022 | A | B | 715±10 | |
| 111014-5024 | A | B | 1640±10 | |
| 111014-5025 | A | B | 1225±10 | |
| 111014-5026 | A | A | 2000±20 | |
| 111014-5027 | A | B | 2000±20 | |
| 111014-5028 | C (BROWN) | B | 2000±20 | |
| 111014-5029 | D | B | 2000±20 | |
| 111014-5030 | C (BROWN) | C (BROWN) | 2000±20 | |
| 111014-5031 | A | A | 3000±30 | |
| 111014-5032 | D | D | 2000±20 | |
| 111014-5033 | D | D | 3000±30 | |
| 111014-5034 | A | A | 305±10 | |
| 111014-5035 | B | B | 4800±20 | |
| 111014-5037 | B | C (BROWN) | 1000±10 | |
| 111014-5038 | A | C (BLACK) | 500±10 | |
| 111014-5039 | B | B | 300±10 | |

WIRING DIAGRAM

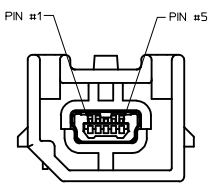
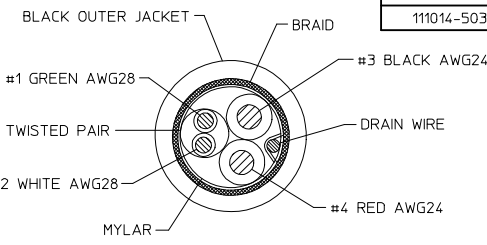
| SIGNAL NAME | CONTACT # | MINI-B PLUG #1 (HOST) | MINI-B PLUG #2 (TARGET) | CONTACT # | SIGNAL NAME |
|-------------|-----------|----------------------------|-------------------------|-----------|-------------|
| | | WIRE COLORS | WIRE COLORS | | |
| VBUS | 1 | RED | RED | 1 | VBUS |
| D- | 2 | WHITE | WHITE | 2 | D- |
| D+ | 3 | GREEN | GREEN | 3 | D+ |
| NO CONNECT | 4 | NO CONNECT | | 4 | NO CONNECT |
| GND | 5 | BLACK | BLACK | 5 | GND |
| CABLE BRAID | SHELL | BRAID TO SHELL TERMINATION | | SHELL | CABLE BRAID |

CUSTOMER P/N
 |||||
 MOLEX P/N REV YYYYMMDDX
 Made in "Country of Origin"
MOLEX LOGO
 MOLEX P/N REV YYYYMMDDX
 |||||
 CUSTOMER P/N

LABEL FORMAT

LAST LETTER OF DATE CODE "X" = PRODUCTION SHIFT CODE.
 BAR CODE = MOLEX MATERIAL NUMBER.
 Country of Origin = NAME OF COUNTRY OF MANUFACTURING PLANT.

- NOTES:
- PART MUST CONFORM TO THE ELECTRICAL CONNECTION SYSTEM DESIGN SPECIFICATION (SDS) VER 13, DATED 06-APR-06; TEMP CLASS "-40~85°C".
 - UNLESS OTHERWISE SPECIFIED, PART MUST CONFORM TO THE LATEST LEVEL OF SAE/USCAR-30 AND USB 2.0.
 - ALL PLASTIC PARTS MUST HAVE MATERIAL IDENTIFICATION SYMBOLS CLEARLY MARKED, WHEREVER PACKAGE SIZE PERMITS.
 - GENERAL TOLERANCES: ±0.25 ALL ONE PLACE DIMENSIONS, ±0.15 ALL TWO PLACE DIMENSIONS, AND ±0.5° ALL ANGULAR DIMENSIONS.
 - 0.3MM MAXIMUM RADIUS PERMISSIBLE ON EDGES AND FILLETS SHOWN AS SHARP FOR PLASTIC PARTS.
 - PARTS ARE TO BE FREE OF SCRATCHES, DISCOLORATION, SALT RESIDUE OR OTHER IMPERFECTIONS THAT MAY AFFECT FUNCTION OR FIT OF PART.
 - IDENTIFICATION LABEL MUST DISPLAY CUSTOMER PART NUMBER IF REQUIRED, SUPPLIER PART NUMBER, DATE CODE (YYYYMMDD), REVISION IF REQUIRED, AND LOGO.
 - LEAD FREE, NO RoHS EXEMPTIONS.
 - FINISHES: TERMINAL: SELECTIVE GOLD (Au) IN THE CONTACT AREA; THICKNESS = 0.75 MICROMETER (30 MICROINCH) MINIMUM OVER NICKEL (Ni) OVERALL; THICKNESS = 1.25 MICROMETER (50 MICROINCH) MINIMUM.
 - PACKAGING SPECIFICATION: PK-68800-001.



CABLE CONSTRUCTION

MATING HEADER FOR MINI-B PLUGS (POLARIZATION - A SHOWN)

| | | | | | | | | | |
|---|--------------------------------------|---|---|---|--|---------------------------------------|-------------------------------|----------------------------|--|
| ADDED -5000 CUST. P/N EC NO: CPG2015-6520 DRAWN BY: 2015/06/23 CHECKED BY: 2015/06/23 APPROVED BY: 2015/08/04 | QUALITY SYMBOLS ∇=0 ∇=0 ∇=0 | GENERAL TOLERANCES (UNLESS SPECIFIED) mm INCH | | DIMENSION STYLE MM ONLY | | SCALE 2:1 | DESIGN UNITS METRIC | THIRD ANGLE PROJECTION | |
| | | 4 PLACES ± --- ± --- 3 PLACES ± --- ± --- 2 PLACES ± 0.13 ± --- 1 PLACE ± 0.25 ± --- 0 PLACE ± ± | DRAWN BY: J.REEVES DATE: 2007/07/27 CHECKED BY: J.REEVES DATE: 2007/07/27 APPROVED BY: MONROE DATE: 2010/03/16 | TITLE USB CABLE ASSEMBLY MINI-B PLUG STRAIGHT TO MINI-B PLUG STRAIGHT | | | | | |
| | | ANGULAR ± 3 ° DRAFT WHERE APPLICABLE MUST REMAIN WITHIN DIMENSIONS | | MATERIAL NO. SEE CHART | | DOCUMENT NO. SD-111014-1000 | | SHEET NO. 1 OF 1 | |
| | | THIS DRAWING CONTAINS INFORMATION THAT IS PROPRIETARY TO MOLEX INCORPORATED AND SHOULD NOT BE USED WITHOUT WRITTEN PERMISSION | | | | | | | |