



Chipsmall Limited consists of a professional team with an average of over 10 year of expertise in the distribution of electronic components. Based in Hongkong, we have already established firm and mutual-benefit business relationships with customers from,Europe,America and south Asia,supplying obsolete and hard-to-find components to meet their specific needs.

With the principle of “Quality Parts,Customers Priority,Honest Operation,and Considerate Service”,our business mainly focus on the distribution of electronic components. Line cards we deal with include Microchip,ALPS,ROHM,Xilinx,Pulse,ON,Everlight and Freescale. Main products comprise IC,Modules,Potentiometer,IC Socket,Relay,Connector.Our parts cover such applications as commercial,industrial, and automotives areas.

We are looking forward to setting up business relationship with you and hope to provide you with the best service and solution. Let us make a better world for our industry!



## Contact us

Tel: +86-755-8981 8866 Fax: +86-755-8427 6832

Email & Skype: info@chipsmall.com Web: www.chipsmall.com

Address: A1208, Overseas Decoration Building, #122 Zhenhua RD., Futian, Shenzhen, China

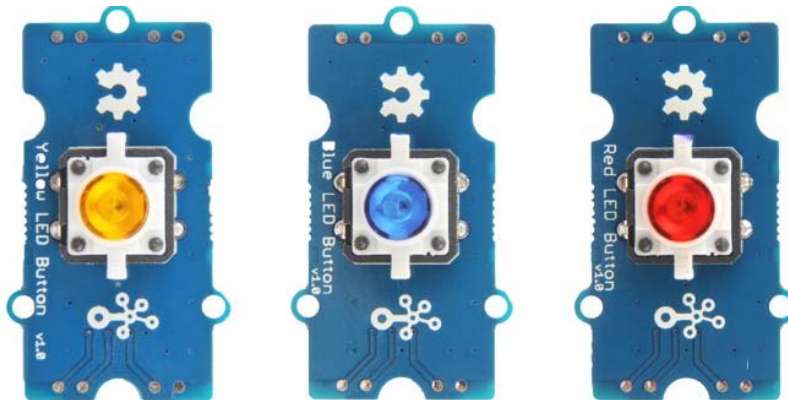




## Grove - Blue LED Button

SKU 111020046

### Description



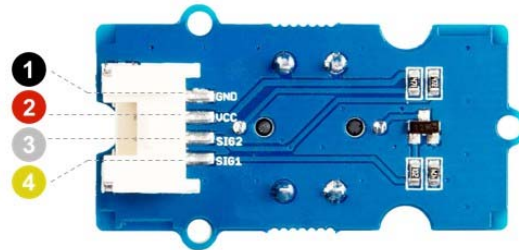
The Grove - LED Button is composed of Grove - Yellow Button, Grove - Blue LED Button and Grove - Red LED Button.

The Grove - Blue LED Button is stable and reliable with a 100 000 times long life. With the build-in LED, you can apply it to many interesting projects, it is really useful to use the LED to show the status of the button. We use a high-quality N-Channel MOSFET to control the LED to ensure the high switching speed and a low consumption. All in all, you want some really awesome button? Here you go ...

## Features

- Long operating life
- Easy to use
- Grove Digital interface

## Pin Map



- ❶ GND: connect this module to the system GND
- ❷ VCC: you can use 5V or 3.3V for this module
- ❸ SIG2: output the button status, default high
- ❹ SIG1: input the LED control signal, default low

## Technical Details

Dimensions	40mm x 20mm x 16mm
Weight	G.W 10.30g
Battery	Exclude
Operating voltage	3.3V/5V
Press Resistance	<100mΩ
Release Resistance	>100MΩ

## Part List

Grove - Blue LED Button	1
Grove cable	1

ECCN/HTS

ECCN	EAR99
HSCODE	8536500000

