



Chipsmall Limited consists of a professional team with an average of over 10 year of expertise in the distribution of electronic components. Based in Hongkong, we have already established firm and mutual-benefit business relationships with customers from,Europe,America and south Asia,supplying obsolete and hard-to-find components to meet their specific needs.

With the principle of “Quality Parts,Customers Priority,Honest Operation,and Considerate Service”,our business mainly focus on the distribution of electronic components. Line cards we deal with include Microchip,ALPS,ROHM,Xilinx,Pulse,ON,Everlight and Freescale. Main products comprise IC,Modules,Potentiometer,IC Socket,Relay,Connector.Our parts cover such applications as commercial,industrial, and automotives areas.

We are looking forward to setting up business relationship with you and hope to provide you with the best service and solution. Let us make a better world for our industry!



## Contact us

Tel: +86-755-8981 8866 Fax: +86-755-8427 6832

Email & Skype: info@chipsmall.com Web: www.chipsmall.com

Address: A1208, Overseas Decoration Building, #122 Zhenhua RD., Futian, Shenzhen, China



4

3

2

1

THIS DRAWING IS UNPUBLISHED.  
VERTRAULICHE UNVERÖFFENTLICHTE ZEICHNUNG

RELEASED FOR PUBLICATION  
FREI FUER VERÖFFENTLICHUNG

MATED WITH:  
PASSEND ZU:  
1110949

LOC  
AI

DIST

REVISIONS  
ÄNDERUNGEN

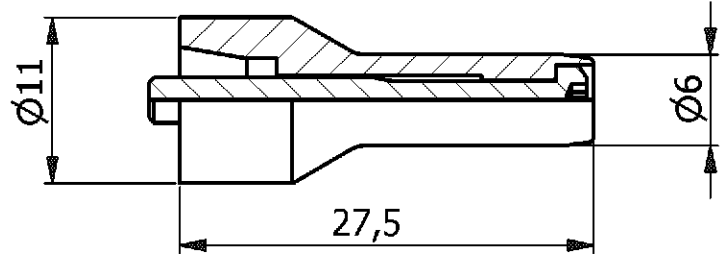
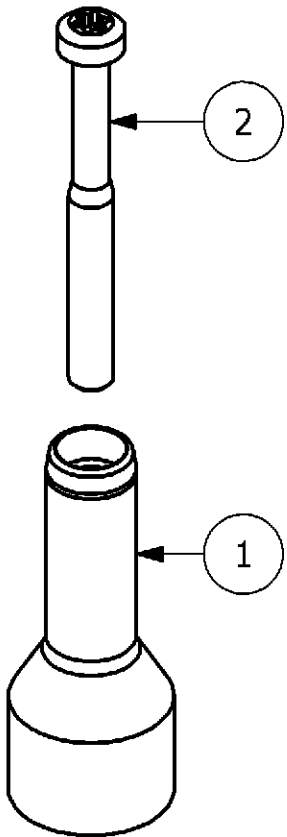
© COPYRIGHT 2000 BY AMP INCORPORATED.

ALL RIGHTS RESERVED.  
ALLE RECHTE VORBEHALTEN

PROJEKT NR.:  
B901815

P LTR DESCRIPTION BESCHREIBUNG  
C3 REVISED BY ECR-07-016077

DATE DWN APVD  
04.07.2007 GW BR



0-1 as shown

### NOTES

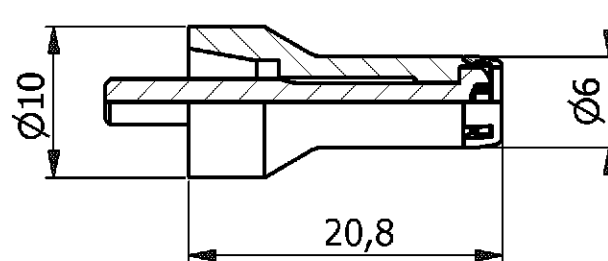
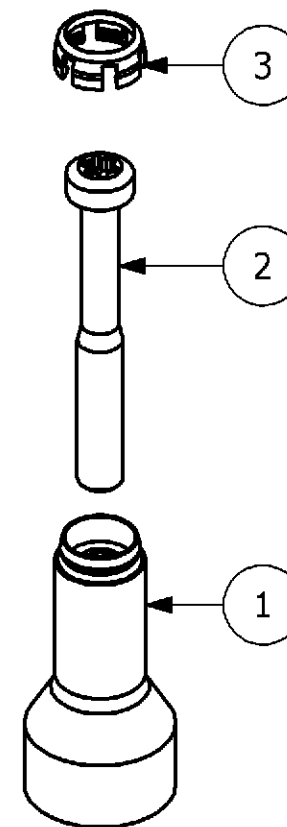
- 1 SUITABLE CRIMP BARRELS: SERIES HF.06/08  
CUSTOMER DRAWING: 1110952, 1108807
- 2 SUITABLE INSERTS: SERIES MDL; MDL2  
CUSTOMER DRAWING: 1103024, 1104560, 1110957
- 3 STANDARDS:  
DIN EN 61984; DIN EN 60664-1
- 4 PACKAGING:  
10 SETS IN A CARTON, PRE-MOUNTED

QTY.	DESCRIPTION	MATERIAL	SURFACE	COLOR	NOTE	ITEM
1	PIN CONTACT	BRASS	SILVER PLATED	---	LONG VERSION	1
1	SCREW	STAINL.STEEL	---	---	M3X27, SELFLOCKING	2

PN: 0-1 / Ordering Text: HF-06-Sti

### NOTES

- 1 SUITABLE CRIMP BARRELS: SERIES HF.06/08  
CUSTOMER DRAWING NO.: 1110952, 1108807
- 2 SUITABLE INSERTS: SERIES HVS; HC.20  
CUSTOMER DRAWING: 1103243, 1245442
- 3 STANDARDS:  
DIN EN 61984; DIN EN 60664-1
- 4 PACKAGING:  
10 SETS IN A CARTON, PRE-MOUNTED



0-2 as shown

QTY.	DESCRIPTION	MATERIAL	SURFACE	COLOR	NOTE	ITEM
1	IP20-PROTECTION	PA6.6-GF25	NATURAL	BLACK	FOR PIN CONTACT	3
1	SCREW	STAINL.STEEL	---	---	M3X23,5, SELFLOCKING	2
1	PIN CONTACT	BRASS	SILVER PLATED	---	SHORT VERSION	1

PN: 0-2 / Ordering Text: HF-06-Sti-IP20

THIS DRAWING IS A CONTROLLED DOCUMENT FOR AMP INCORPORATED. IT IS SUBJECT TO CHANGE AND THE CONTROLLING ENGINEERING ORGANIZATION SHOULD BE CONTACTED FOR THE LATEST REVISION. DIESES ZEICHNUNGSDOKUMENT WIRD DURCH AMP INCORPORATED KONTROLLIERT. ÄNDERUNGEN, DIE DEM TECHNISCHEN FORTSCHRITT DIENEN, SIND VORBEHALTEN. DEN JEWELIG LETZTLIEGENDEN ÄNDERUNGSSTAND ERFAHREN SIE AUF ANFRAGE.		DWN G.WROBLEWSKI 09.08.2005	<b>tyco</b> Electronics Tyco / Electronics AMP GmbH D - 53819 Neunkirchen
DIMENSIONS: DIMENSIONEN: mm		CHK H.BRAUN 09.08.2005	
TOLERANCES UNLESS OTHERWISE SPECIFIED: ALLGEMEINTOLERANZEN n. ISO 8015 n. ISO 2768 - mH -E n. DIN 16901 - 140		APVD T.SCHNURPFEIL 09.08.2005	NAME <b>ASS'Y PIN CONTACT SERIES HF6</b>
MATERIAL		PRODUCT SPEC PRODUKTSPEZ. 108-74024	SIZE A3
FINISH / OBERFLÄCHE / FARBE		APPLICATION SPEC VERARBEITUNGSSPEZ. 114-74031	CAGE CODE 00779
WEIGHT GEWICHT		DRAWING NO ZEICHNUNGS-NR. 1110948	
CUSTOMER DRAWING / KUNDENZEICHNUNG		RESTRICTED TO NUR FUER -	
SCALE MASSSTAB 2:1		SHEET BLATT 1 OF VON 1 REV C3	