



Chipsmall Limited consists of a professional team with an average of over 10 year of expertise in the distribution of electronic components. Based in Hongkong, we have already established firm and mutual-benefit business relationships with customers from,Europe,America and south Asia,supplying obsolete and hard-to-find components to meet their specific needs.

With the principle of “Quality Parts,Customers Priority,Honest Operation,and Considerate Service”,our business mainly focus on the distribution of electronic components. Line cards we deal with include Microchip,ALPS,ROHM,Xilinx,Pulse,ON,Everlight and Freescale. Main products comprise IC,Modules,Potentiometer,IC Socket,Relay,Connector.Our parts cover such applications as commercial,industrial, and automotives areas.

We are looking forward to setting up business relationship with you and hope to provide you with the best service and solution. Let us make a better world for our industry!



Contact us

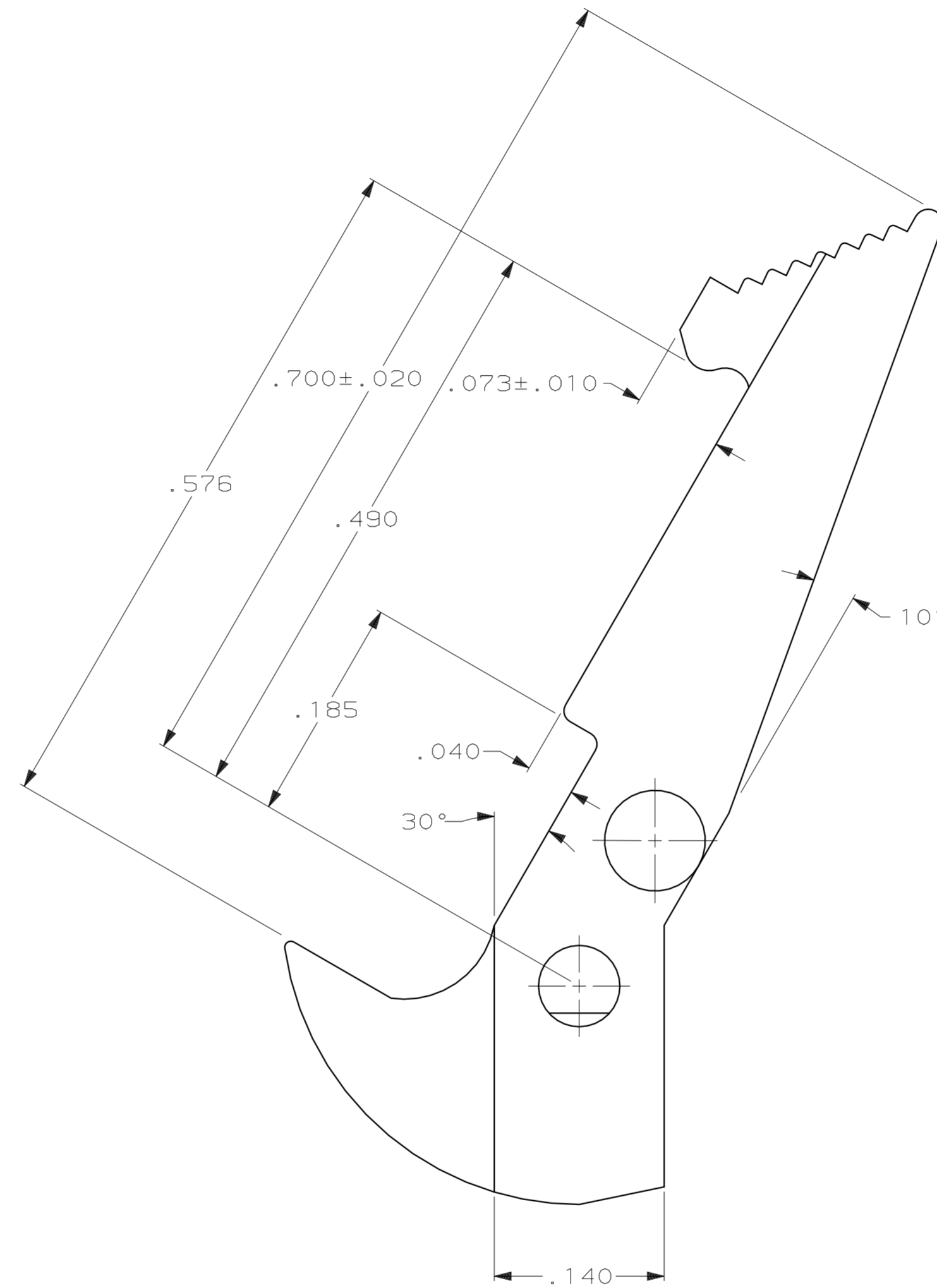
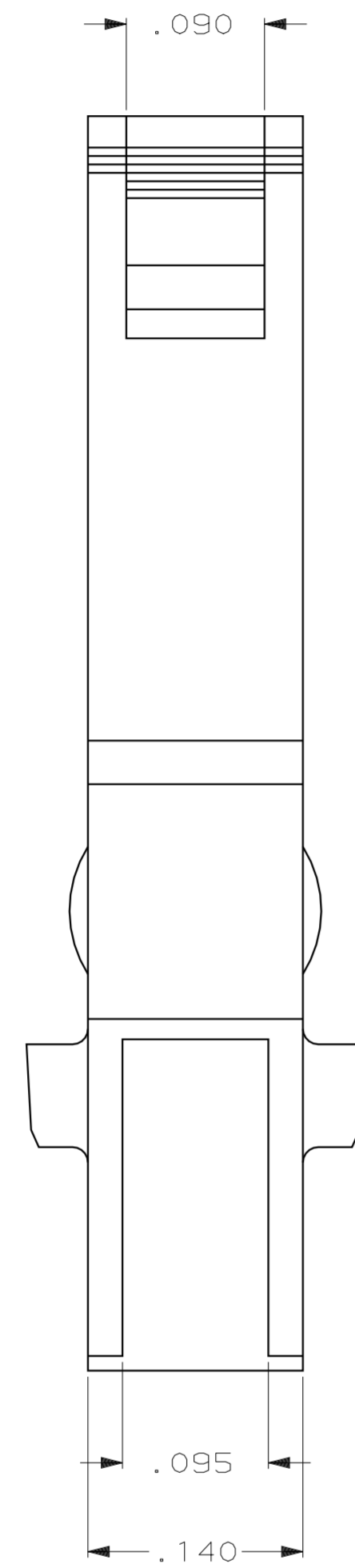
Tel: +86-755-8981 8866 Fax: +86-755-8427 6832

Email & Skype: info@chipsmall.com Web: www.chipsmall.com

Address: A1208, Overseas Decoration Building, #122 Zhenhua RD., Futian, Shenzhen, China



REVISIONS								
LOC	DIST	P	F	ZONE	LTR	DESCRIPTION	DATE	APPD
GP	00					D1 REVISED PER ECO 06-004646	08MAR06	JG



- 1 FLAME RETARDANT PCT, UL94V-0 RATED, COLOR RED.
- 2 FLAME RETARDANT PCT, UL94V-0 RATED, COLOR BLACK.
- 3. TO BE USED WITH AMP-LATCH UNIVERSAL HEADER WHICH MATES WITH AMP-LATCH CONNECTOR WITH STRAIN RELIEF.

2	111338-3
1	111338-1
MATERIAL	PART NO

DO NOT SCALE PRINT. UNLESS SPECIFIED DIMENSIONS IN INCHES. TOLERANCES ON:		DR 2-16-88 L SIPE		AMP INCORPORATED Harrisburg, Pa. 17105	
2 PLC DEC ± -		CHK 2-19-88 S WELDON			
3 PLC DEC ± .005		APPD 2-24-88 M E PEIFER		NAME	
ANGLES ± 1°		APPD 2-24-88 D HOFFMAN		LATCH, UNIVERSAL HEADER, AMP-LATCH	
MATERIAL		PRODUCT SPEC		SIZE	
SEE TABLE		-		D 00779	
FINISH		APPLICATION SPEC		DRAWING NO	
-		-		111338	
WEIGHT		-		SCALE	
-		-		10:1	
				SHEET	
				1 OF 1	