



Chipsmall Limited consists of a professional team with an average of over 10 year of expertise in the distribution of electronic components. Based in Hongkong, we have already established firm and mutual-benefit business relationships with customers from,Europe,America and south Asia,supplying obsolete and hard-to-find components to meet their specific needs.

With the principle of “Quality Parts,Customers Priority,Honest Operation,and Considerate Service”,our business mainly focus on the distribution of electronic components. Line cards we deal with include Microchip,ALPS,ROHM,Xilinx,Pulse,ON,Everlight and Freescale. Main products comprise IC,Modules,Potentiometer,IC Socket,Relay,Connector.Our parts cover such applications as commercial,industrial, and automotives areas.

We are looking forward to setting up business relationship with you and hope to provide you with the best service and solution. Let us make a better world for our industry!



## Contact us

Tel: +86-755-8981 8866 Fax: +86-755-8427 6832

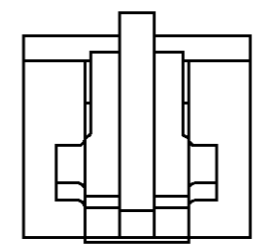
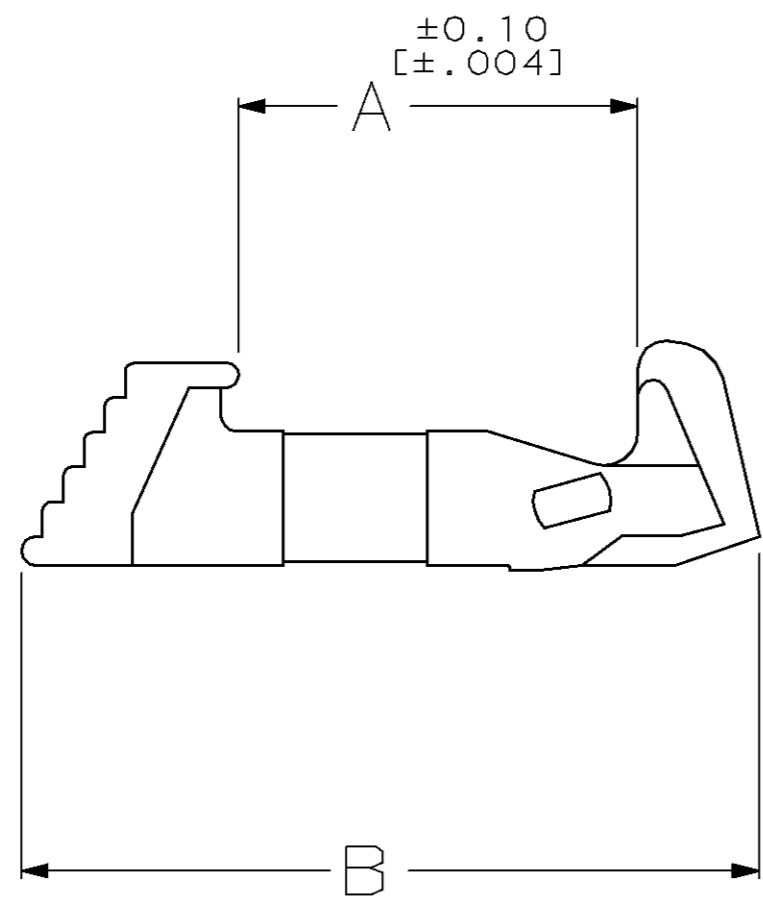
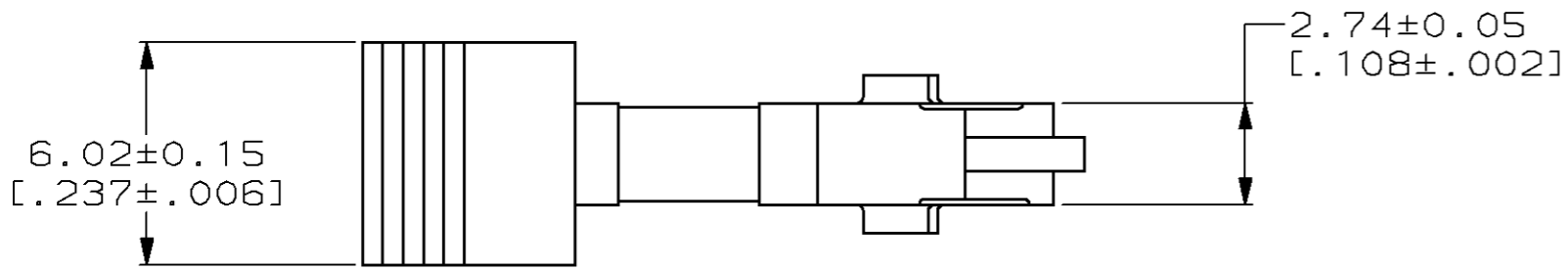
Email & Skype: info@chipsmall.com Web: www.chipsmall.com

Address: A1208, Overseas Decoration Building, #122 Zhenhua RD., Futian, Shenzhen, China



THIS DRAWING IS UNPUBLISHED. RELEASED FOR PUBLICATION, 19 .  
 © COPYRIGHT 19 BY AMP INCORPORATED. ALL INTERNATIONAL RIGHTS RESERVED.

LOC	DIST	P	F	ZONE	LTR	DESCRIPTION	DATE	APPD
AR	35				O	RELEASED TO CUST	3-6-90	-
					A	REVISED PER ECN BD3979	5-14-90	FMH
					B	REVISED PER ECN BD4722	2-25-91	FMH
					C	REV PER ECN BD4931	04/04/91	FMH
					D	REV PER EC 0020-2-93	02/18/93	FMH
					E	OBS -4 EC 0020-460-95	07 NOV 95	DK
					F	SUPSD -2 PER EC 0020-377-95	17 JAN 96	DK
					G	REACTIVATE -2 PER EC 0020-637-96	10 JUN 96	DLK



21.56 [.849]	12.62 [.497]	$\triangle 1$ 111451-4
23.57 [.928]	14.63 [.576]	111451-3
20.98 [.826]	12.04 [.474]	111451-2
19.51 [.768]	10.57 [.416]	111451-1
B	A	PART NO

$\triangle 1$  OBSOLETE PART NUMBER.

DO NOT SCALE PRINT. UNLESS SPECIFIED DIMENSIONS IN mm [INCHES] TOLERANCES ON: 2 PLC DEC ± 0.13 [.005] 3 PLC DEC ± - ANGLES ± -		DR 3-6-90 C. OBERMAN	AMP INCORPORATED Harrisburg, Pa. 17105
MATERIAL POLYESTER, BLACK	CHK 3-7-90 R. STONE	APPD 3-7-90 F. M. HEINEY	
FINISH -	APPD 3-8-90 D. HOFFMAN	PRODUCT SPEC 108-1336	NAME EJECTOR LATCH, UNIV PIN CONN, AMP-LATCH™
	APPLICATION SPEC 114-7011	WEIGHT -	SIZE <b>B</b> CAGE CODE 00779 DRAWING NO 111451
			SCALE 5:1 SHEET 1 OF 1