



Chipsmall Limited consists of a professional team with an average of over 10 year of expertise in the distribution of electronic components. Based in Hongkong, we have already established firm and mutual-benefit business relationships with customers from,Europe,America and south Asia,supplying obsolete and hard-to-find components to meet their specific needs.

With the principle of “Quality Parts,Customers Priority,Honest Operation,and Considerate Service”,our business mainly focus on the distribution of electronic components. Line cards we deal with include Microchip,ALPS,ROHM,Xilinx,Pulse,ON,Everlight and Freescale. Main products comprise IC,Modules,Potentiometer,IC Socket,Relay,Connector.Our parts cover such applications as commercial,industrial, and automotives areas.

We are looking forward to setting up business relationship with you and hope to provide you with the best service and solution. Let us make a better world for our industry!



Contact us

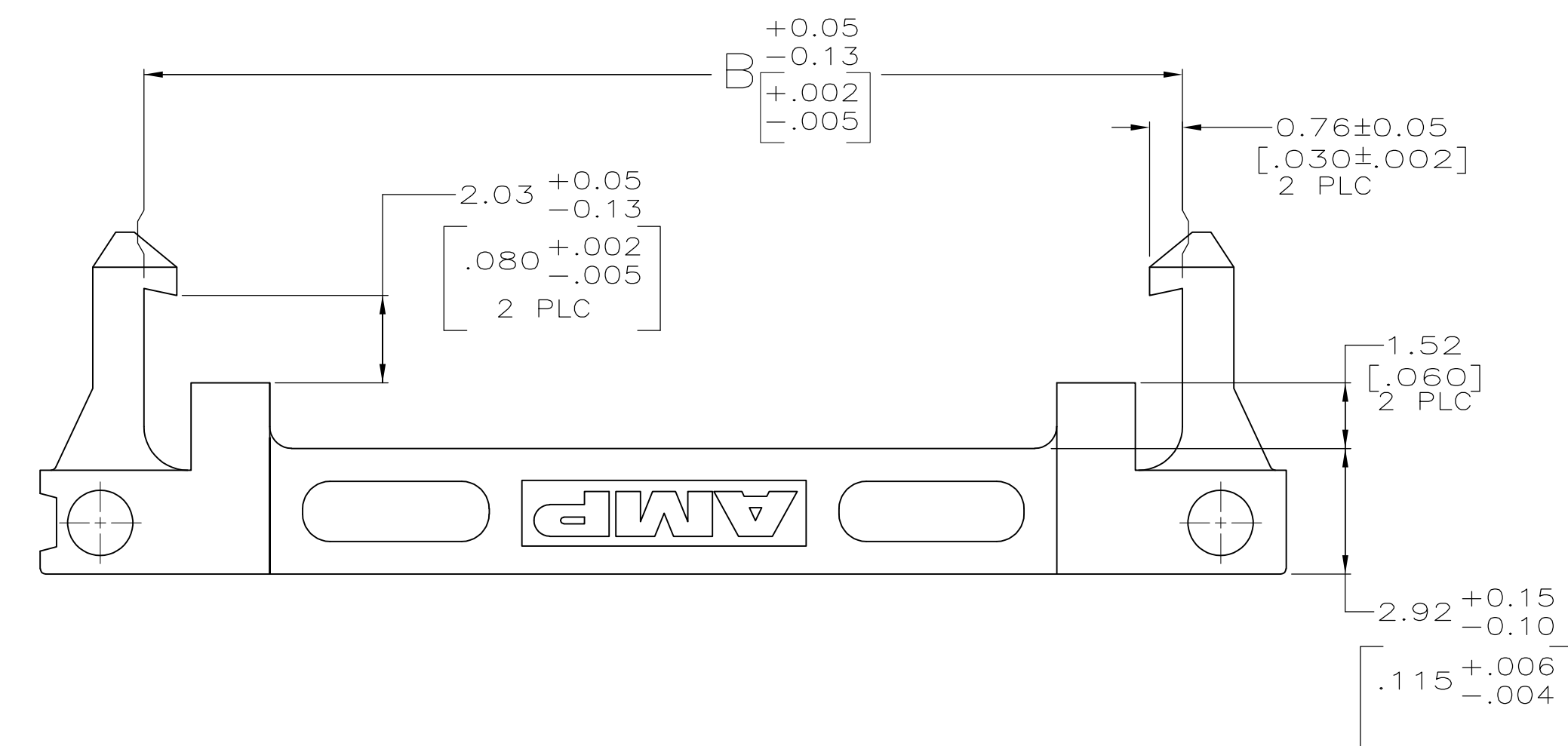
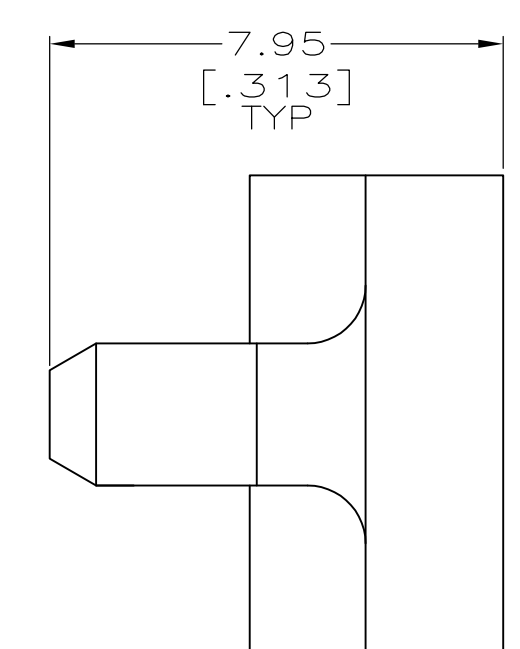
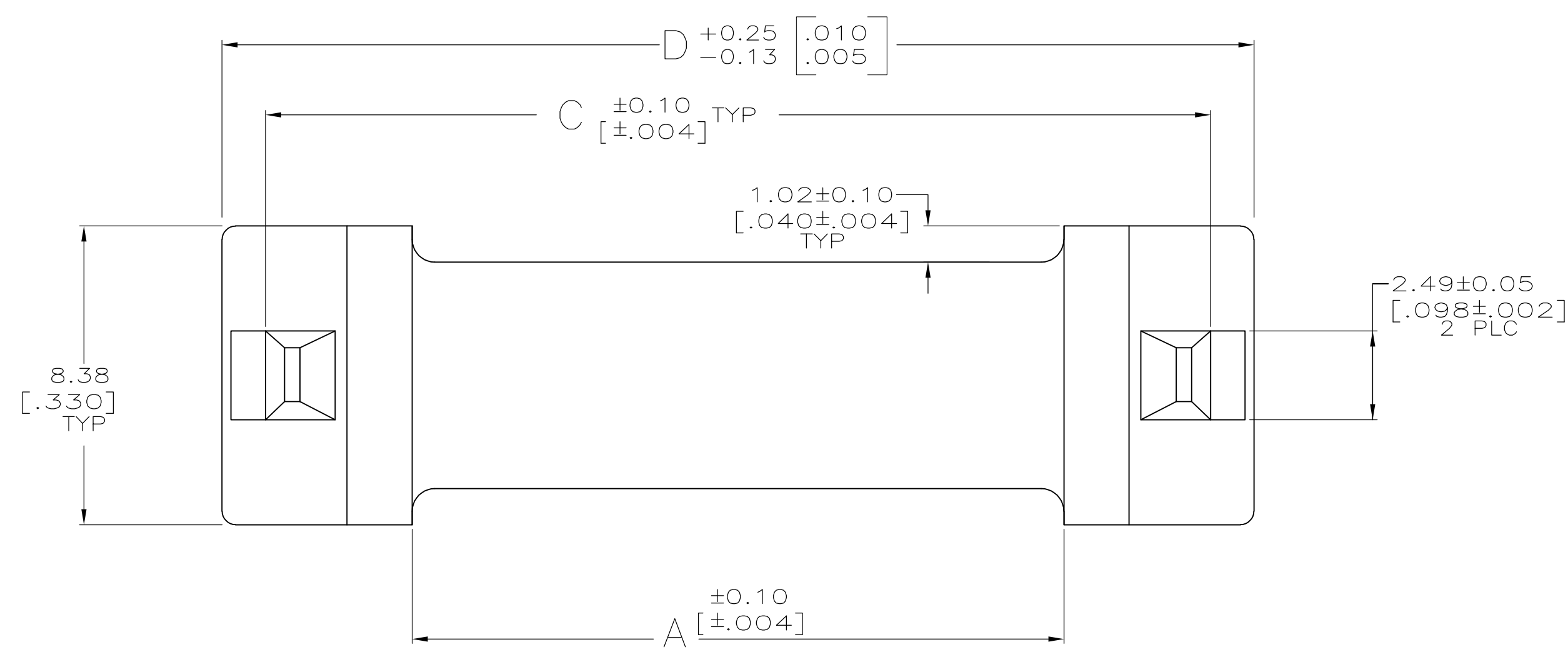
Tel: +86-755-8981 8866 Fax: +86-755-8427 6832

Email & Skype: info@chipsmall.com Web: www.chipsmall.com

Address: A1208, Overseas Decoration Building, #122 Zhenhua RD., Futian, Shenzhen, China



LOC	DIST	REVISIONS					
GP	00	P	LTR	DESCRIPTION	DATE	OWN	APVD
		L2		REVISED PER ECO-11-004835	11MAR11	RK	HMR



92.46	90.17	88.04	81.79	64	1-111547-3
[3.640]	[3.550]	[3.466]	[3.220]		
87.38	85.09	82.96	76.71	60	1-111547-2
[3.440]	[3.350]	[3.266]	[3.020]		
74.68	72.39	70.26	64.01	50	1-111547-1
[2.940]	[2.850]	[2.766]	[2.520]		
67.06	64.77	62.64	56.39	44	1-111547-0
[2.640]	[2.550]	[2.466]	[2.220]		
61.98	59.69	57.56	51.31	40	111547-9
[2.440]	[2.350]	[2.266]	[2.020]		
54.36	52.07	49.94	43.69	34	111547-8
[2.140]	[2.050]	[1.966]	[1.720]		
49.28	46.99	44.86	38.61	30	111547-7
[1.940]	[1.850]	[1.766]	[1.520]		
44.20	41.91	39.78	33.53	26	111547-6
[1.740]	[1.650]	[1.566]	[1.320]		
41.66	39.37	37.24	30.99	24	111547-5
[1.640]	[1.550]	[1.466]	[1.220]		
36.58	34.29	32.16	25.91	20	111547-4
[1.440]	[1.350]	[1.266]	[1.020]		
31.50	29.21	27.08	20.83	16	111547-3
[1.240]	[1.150]	[1.066]	[.820]		
28.96	26.67	24.54	18.29	14	111547-2
[1.140]	[1.050]	[.966]	[.720]		
23.88	21.59	19.46	13.21	10	111547-1
[.940]	[.850]	[.766]	[.520]		
D	C	B	A	NO OF POSN	PART NUMBER

THIS DRAWING IS A CONTROLLED DOCUMENT.		DWN	H MOLL	10-23-90	PART NO	
DIMENSIONS: MM(INCHES)		CHK	R.STONE	11-7-90	TE Connectivity	
TOLERANCES UNLESS OTHERWISE SPECIFIED:		APVD	F.M.HEINEY	11-7-90	NAME	
0 PLC	± -	PRODUCT SPEC		108-1336		
1 PLC	± -	APPLICATION SPEC		114-7011		
2 PLC	± ± 0.13[.005]	MATERIAL		GLASS FILLED POLYESTER, BLACK		
3 PLC	± ± -	FINISH		-		
4 PLC	± ± -	WEIGHT		-		
ANGLES	± ± -	CUSTOMER DRAWING		SCALE 8:1 SHEET 1 OF 1 REV L2		
SIZE		CAGE CODE		DRAWING NO		RESTRICTED TO
A2		00779		G-111547		-