



Chipsmall Limited consists of a professional team with an average of over 10 year of expertise in the distribution of electronic components. Based in Hongkong, we have already established firm and mutual-benefit business relationships with customers from,Europe,America and south Asia,supplying obsolete and hard-to-find components to meet their specific needs.

With the principle of “Quality Parts,Customers Priority,Honest Operation,and Considerate Service”,our business mainly focus on the distribution of electronic components. Line cards we deal with include Microchip,ALPS,ROHM,Xilinx,Pulse,ON,Everlight and Freescale. Main products comprise IC,Modules,Potentiometer,IC Socket,Relay,Connector.Our parts cover such applications as commercial,industrial, and automotives areas.

We are looking forward to setting up business relationship with you and hope to provide you with the best service and solution. Let us make a better world for our industry!



## Contact us

Tel: +86-755-8981 8866 Fax: +86-755-8427 6832

Email & Skype: [info@chipsmall.com](mailto:info@chipsmall.com) Web: [www.chipsmall.com](http://www.chipsmall.com)

Address: A1208, Overseas Decoration Building, #122 Zhenhua RD., Futian, Shenzhen, China



# applicom™ Profibus Network Interface Cards

PCI Universal, PCI Express

**Quickly and easily connect your PC-based industrial applications to the industrial world with applicom™ intelligent communication solutions**

applicom™ intelligent communication offers complete and ready-to-use solutions that cover more than 40 protocols within a wide choice of industrial networks and fieldbuses including Ethernet, Profibus, WorldFIP and Serial Links. These communication solutions connect PC-based applications (HMI, SCADA, MES, custom applications) to devices including programmable controllers, I/O modules, Panel PCs, process instruments and other industrial equipment.

With applicom™ smart built-in processor technology, each network interface card (NIC) is able to execute all management and processing (polling, frame management, etc) of communication protocols without using a computer's processing (CPU) time; resulting in extremely fast, efficient application performance.

applicom™ solutions are recommended for SCADA/HMI, and custom automation control systems which require powerful data acquisition to manage a large volume of I/O data. applicom™ cards are successfully installed around the world in sectors as varied as oil and gas, automotive, food processing, technical building management, and transportation.

## Features and Benefits

Fast data acquisition between PC-based applications and industrial devices connected to Profibus

Enables quick return-of-investment; single development library and OPC server reduce the time required to learn and integrate applicom™ products in to system architectures

On-board co-processor

Eliminates data bottlenecks, ensuring delivery of time critical information; simultaneously run all Profibus protocols

Integrated package includes all protocols

Provides all-in-one solution for customers

Combine several cards (up to 8) and run simultaneously from 1 to 32 protocols on a single PC

Optimum choice for HMI/SCADA applications

Run all Profibus protocols simultaneously

Enables fast integration of industrial communication into applications (configuration, diagnostic, data servers, development libraries)

Compatible with:  
Simatic S7 Series (S7-300, S7-400)  
Simatic S5 Series (95U, 115U, 135U, 155U)

Save commissioning time; ONE configuration and ONE diagnostic tool whatever the protocols used

## Applications

Supervision / Scada to monitor plant

HMI; Acquisition of process data on panel pc to manage complex machine

Active front-end acquisition for building management systems such as fire detection, access control, power distribution, HVAC

Measures and bench tests for process simulation, car engine validation, and experimental prototypes

Design tools for custom solutions such as a gateway feature, time table management, alarming, etc.



Support of Windows® 8  
and 2012 Server



# applicom™ Profibus Network Interface Cards

PCI Universal, PCI Express

**molex®**

## Specifications

### PRODUCT PACKAGE

Engineering Tools  
Configuration console  
Test and diagnostic tools

Data Servers  
OPC DA v3.0 and v2.05  
Wonderware DAServer  
Wonderware I/O (SuiteLink/FastDDE)

Includes Development Libraries  
Visual Studio (VB/CC++/C samples),  
MS Visual Studio 2005 (VB.Net & C# samples),  
installed on local disc  
Other unsupported samples (Borland Delphi,  
Windev and National Instruments)  
(LabWindows CVI, LabVIEW/VI) on CD Rom only

Supported OS:  
Windows® (32-bit & 64-bit): 8, 2012 Server, 7,  
2008 Server, Vista, 2003 Server

### TECHNICAL DATA

Bus Format  
PCI Universal bus 3.3V/5V (PCI-X compatible)  
PCI Express 1x

Hardware Plug & Play  
AMD SC520  
16 Mb SDRAM  
4 Mb Flash Memory  
Consumption: 5.5W

### PROTOCOLS

PCU1500PFB and PCIE1500PFB card  
Profibus DP-V0 Master Class-1 & Class-2  
S7/MPI Master (Siemens S7)  
PPI/PPI+ Master  
FDL for S5 Master (Siemens S5)  
Send/Receive on FDL (Develop your free  
messaging on Profibus)

PCU1500S7 and PCIE1500S7 card  
S7/MPI Master (Siemens S7)  
PPI/PPI+ Master  
Send/Receive on FDL

### COMMUNICATION PORTS

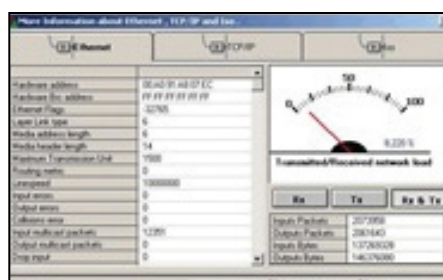
1 Profibus port  
D-Sub, 9pin, female  
2 leds (TX/RX)  
RS485 with galvanic insulation (500 V)  
9.6 Kbps to 1.5 Mbps

### CONFORMANCES

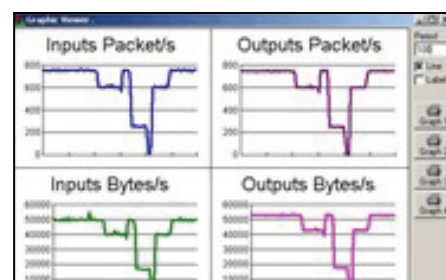
CE  
RoHS  
OPC Certified  
PCI Express certified  
Rockwell Encompass  
Schneider Collaborative



Engineering Console



OPC Server



Diagnostic Tools

## Ordering Information

Order No.	Engineering No.	Description
112011-0004	APP-PFB-PCU-C	applicom™ PCU1500PFB PCI Network Interface Card for Profibus
112011-5026	APP-PFB-PCIE	applicom™ PCIE1500PFB PCI Express Network Interface Card for Profibus
112011-0006	APP-PS7-PCU-C	applicom™ PCU1500S7 PCI Network Interface Card for Profibus Simatic S7
112011-5027	APP-PS7-PCIE	applicom™ PCIE1500S7 PCI Express Network Interface Card for Profibus Simatic S7

Windows® and the Windows logo are trademarks of the Microsoft group of companies  
PROFIBUS is a trademark of PROFIBUS International  
PCI Universal, PCI Express and the PCI Express logo are registered trademarks of PCI-SIG®  
Encompass is a trademark of Rockwell Automation

[www.molex.com/link/bradnics.html](http://www.molex.com/link/bradnics.html)