



Chipsmall Limited consists of a professional team with an average of over 10 year of expertise in the distribution of electronic components. Based in Hongkong, we have already established firm and mutual-benefit business relationships with customers from,Europe,America and south Asia,supplying obsolete and hard-to-find components to meet their specific needs.

With the principle of “Quality Parts,Customers Priority,Honest Operation,and Considerate Service”,our business mainly focus on the distribution of electronic components. Line cards we deal with include Microchip,ALPS,ROHM,Xilinx,Pulse,ON,Everlight and Freescale. Main products comprise IC,Modules,Potentiometer,IC Socket,Relay,Connector.Our parts cover such applications as commercial,industrial, and automotives areas.

We are looking forward to setting up business relationship with you and hope to provide you with the best service and solution. Let us make a better world for our industry!



Contact us

Tel: +86-755-8981 8866 Fax: +86-755-8427 6832

Email & Skype: info@chipsmall.com Web: www.chipsmall.com

Address: A1208, Overseas Decoration Building, #122 Zhenhua RD., Futian, Shenzhen, China





Maximise network flexibility with SST™ Communication Modules for rapid connection of Rockwell ControlLogix systems to PROFIBUS networks

Features and Benefits

Connects Rockwell ControlLogix to a PROFIBUS network

Fully integrated into the Rockwell Automation environment

- Remote configuration and monitoring via Rockwell RSLinx™
- Add-On-Profile for Rockwell RSLogix5000

Direct IO Mapping, no Ladder Logic to write for configuration and data transfer between module and CLX processor

Conformal coated version:

- Protects electronic boards from moisture and contaminants

CLXT modules feature wider temperature ranges and conformal coated, harsh-duty components for use with Rockwell XT PLCs

Specifications

DESCRIPTION

High-speed deterministic communication

Easy diagnostics:

Built-in LEDs and 4 characters display

Manage DP Master and Slave modes simultaneously

Allows changes to PROFIBUS

configuration with PLC in RUN mode

Dynamically add/remove

PROFIBUS slaves from the scan list

CommDTM driver for FDT Frame

engineering software (PACTware™,

FieldCare™, FieldMate™, etc)

Auto-Boot

(Configuration stored in Flash)

Engineering Tools:

- Configuration console
- Test and diagnostic tools

COMPATIBLE PROTOCOLS

Master DP-V0 Class-1 and Class-2

Master DP-V1 Class-1 and Class-2

Slave DP-V0

INCLUDED HARDWARE/SOFTWARE

Add-On-Profile for increased functionality and reduced commissioning time

Support multiple modules in a

chassis; support Local and Remote chassis

One PROFIBUS port, DB9 female,

Galvanic insulation 1000V

Speed: 9.6 Kbps up to 12 Mbps

LEDs for system, communication, and network status

Up to 1984 Input Bytes and

1968 Output Bytes

One Serial port for configuration

and diagnostic

Firmware upgradeable

CONFORMANCE

RoHS compliant

CE

UL

cUL

Class 1 Div 2

FDT Certified

Marine (RINA)

Brad® SST™ Communication Modules for Rockwell ControlLogix

112016 PROFIBUS-DP

Master and Slave



Communication Module
112016-0018 (SST-PB3-CLX-RLL)



CLXT Communication Module
112016-0024 (SST-PB3-CLXT-RLL)

CLXT MODULE:

Same specifications as

SST-PB3-CLX-RLL plus:

Conformal coating

eXTreme components

Ambient Operating Temperature

-25 to 70°C

Applications

Automotive assembly lines

Material handling

Water and wastewater

Agro food industry

Oil and Gas

Pharmaceutical

Machine builders

Marine

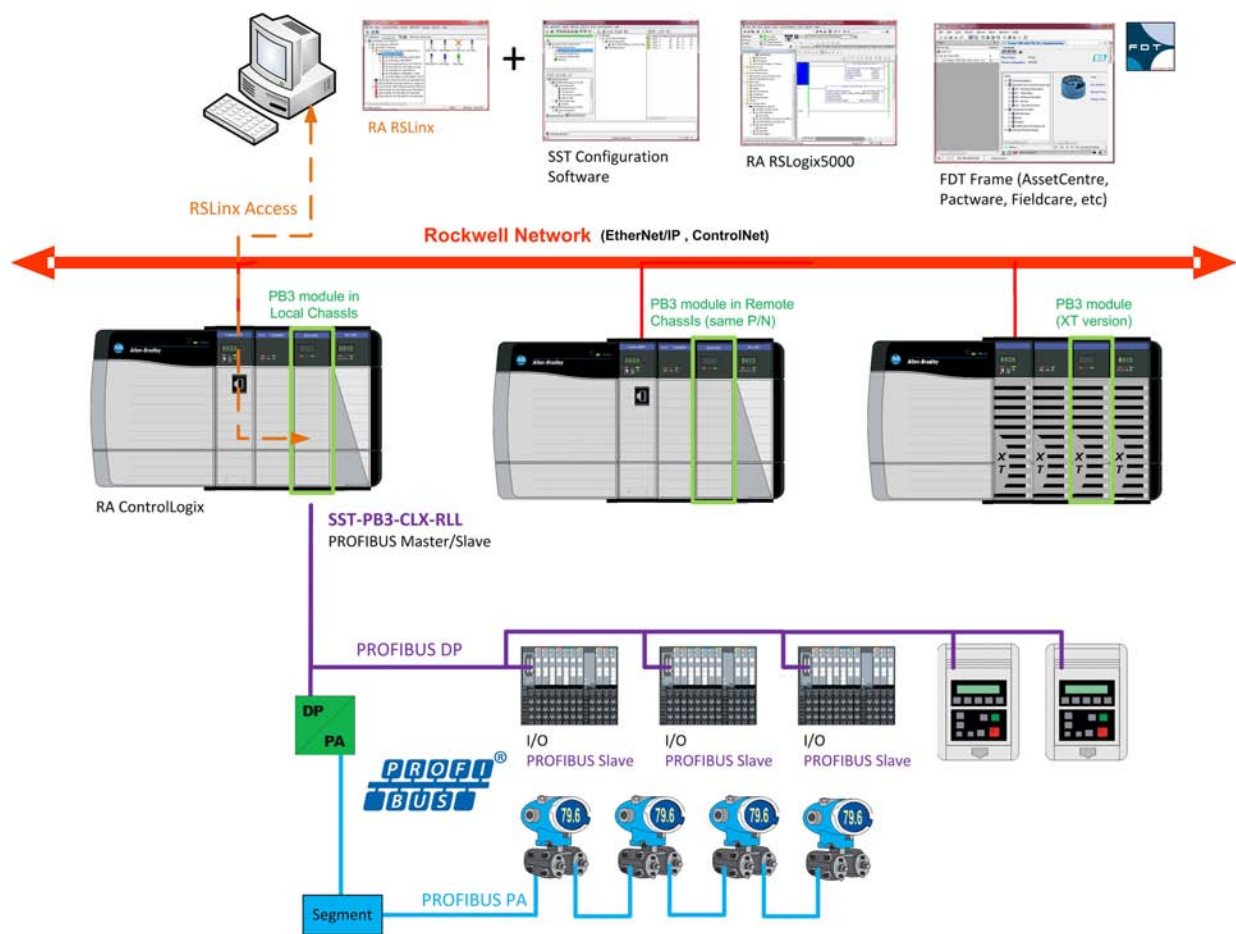
Mining



Wastewater Treatment



Oil and Gas



Ordering Information

Order No.	Engineering No.	Communication Protocol	PLC Supported	Product Attributes
112016-0018	SST-PB3-CLX-RLL	PROFIBUS Master/Slave	Rockwell ControlLogix	Remote Link Library (RLL) feature
112016-0023	SST-PB3-CLX-RLL-CC			Remote Link Library (RLL) feature Conformal Coated
112016-0024	SST-PB3-CLXT-RLL		Rockwell ControlLogix XT	Remote Link Library (RLL) feature Conformal Coated CLXT module components