



Chipsmall Limited consists of a professional team with an average of over 10 year of expertise in the distribution of electronic components. Based in Hongkong, we have already established firm and mutual-benefit business relationships with customers from,Europe,America and south Asia,supplying obsolete and hard-to-find components to meet their specific needs.

With the principle of “Quality Parts,Customers Priority,Honest Operation,and Considerate Service”,our business mainly focus on the distribution of electronic components. Line cards we deal with include Microchip,ALPS,ROHM,Xilinx,Pulse,ON,Everlight and Freescale. Main products comprise IC,Modules,Potentiometer,IC Socket,Relay,Connector.Our parts cover such applications as commercial,industrial, and automotives areas.

We are looking forward to setting up business relationship with you and hope to provide you with the best service and solution. Let us make a better world for our industry!



## Contact us

Tel: +86-755-8981 8866 Fax: +86-755-8427 6832

Email & Skype: [info@chipsmall.com](mailto:info@chipsmall.com) Web: [www.chipsmall.com](http://www.chipsmall.com)

Address: A1208, Overseas Decoration Building, #122 Zhenhua RD., Futian, Shenzhen, China





# SST™-ESR2-CPX Universal Modbus\* Modules

**SST™-ESR2-CPX Modules connect Rockwell Automation CompactLogix L2, L3 and L4 controllers to Modbus\* Ethernet and Modbus Serial networks, enabling high-performance, low-cost solutions for industrial automation applications**

## Features and Benefits

Modbus\* Ethernet and Modbus Serial at the same time

Delivers an extremely flexible design and easy upgrades

Two Modbus Serial ports (software configurable)

Offers more value. Handles any Modbus Serial application

One Modbus Ethernet port (software configurable)

Suitable for any Modbus TCP/UDP application

MicroSD card slot (8 GB MicroSD card included)

Facilitates easy module swap-out

10/100 Mb Ethernet port

Enables fast configuration downloads. Provides backplane or front-module configuration options.

2,500-volt isolation

Ensures high immunity to harsh, noisy networks

MTBF of 181 years

Provides reliable, trouble-free usage

## Applications

### Machine Builders

Complex machines

Packaging

### Factory Automation

Material handling

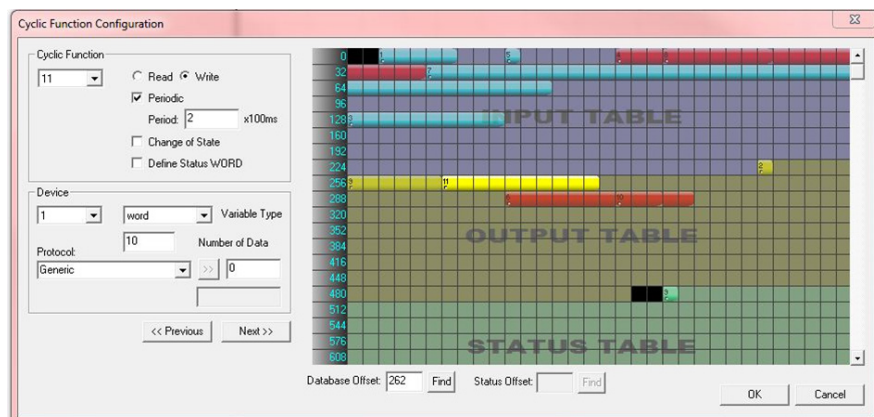
### Process Control

Water, wastewater treatment

Food and beverage industry

Oil and gas

Pharmaceutical



Cyclic Function Screen Showing Data Overlapping Errors, Data mapping, Table Areas, Message Details

\*Modbus is a registered trademark Schneider Automation Inc.

**molex®**



SST-ESR2-CPX-S  
Standard Version



SST-ESR2-CPX-P  
Plus Version



# SST™-ESR2-CPX Universal Modbus\* Modules

**molex**®

## Specifications

### Description

Supports CompactLogix† L2, L3 processors, ver. 15 and higher, L4 Ver. 20 and higher  
Operating temperature: 0 to 60°C  
Storage temperature: -40 to 85°C  
Relative humidity: 5 to 95%, non-condensing  
Independent, 3 electrically isolated communication ports, 2,500 Volts  
Modbus Master and/or Slave functionality, ASCII and RTU formats  
Modbus TCP/UDP, client and server supported  
1x Ethernet, 10/100 Mbps, RJ45 (for configuration and diagnostics)  
2x Serial, 110 bps to 115.2 kbps, RS232/RS485/RS422, RJ45 (DB9 male supplied cable)  
OS supported: Windows XP, 7 (32, 64-bit); Vista, 8 (32, 64-bit)  
Paging access (AOI provided), up to 32,000 words for input, output and status data (Plus version)  
MTBF: 181 years at 25°C  
Maximum Distance Rating: 4 slots

### Included Hardware/Software

One, SST-ESR2-CPX-(S/P) Universal Modbus Module  
One, 8 GB MicroSD card  
One, product CD (engineering tools, configuration console)  
Two, 45cm, RJ-45 to DB-9 male patch cables

### Compatible Protocols

Modbus Master (RTU or ASCII)  
Modbus Slave (RTU or ASCII)  
Modbus TCP and UDP Client and Server

### Conformance

RoHS compliant  
CE certified  
FCC  
Korea CC  
Ex (ATEX)  
UL Class I Div 2, Groups A,B,C,D

### Standard Version

496-word database  
32 Modbus commands/port  
Up to 32 devices per port  
OEM, machine builders, small applications

### Plus Version

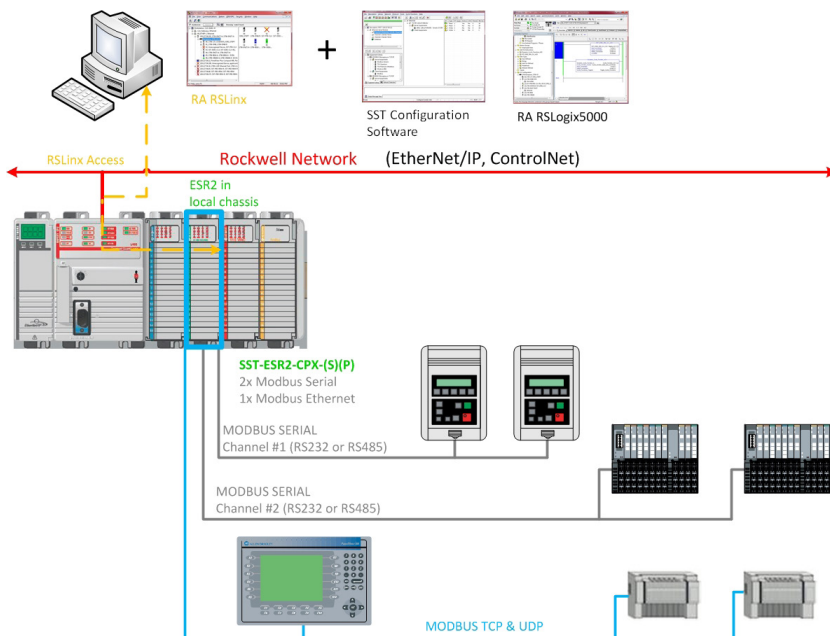
32,000-word database  
256 Modbus commands/port  
Up to 127 serial devices per port and 128 Ethernet devices  
OEM, machine builders, large networks  
SCADA applications

## Ordering Information

Order No.	Product Name	Module
<a href="#">112073-0005</a>	SST-ESR2-CPX-P	SST™ Universal Modbus Module for CompactLogix, Plus Version

Order No.	Product Name	Module
<a href="#">112073-0006</a>	SST-ESR2-CPX-S	SST™ Universal Modbus Module for CompactLogix, Standard Version

## Universal MODBUS\* Module, SST™-ESR2-CPX Networking Capabilities Diagram



\*Modbus is a registered trademark Schneider Automation Inc.

†CompactLogix is a registered trademark of Rockwell Automation, Inc.

[www.molex.com/link/sstcommunicationmodules.html](http://www.molex.com/link/sstcommunicationmodules.html)