



Chipsmall Limited consists of a professional team with an average of over 10 year of expertise in the distribution of electronic components. Based in Hongkong, we have already established firm and mutual-benefit business relationships with customers from,Europe,America and south Asia,supplying obsolete and hard-to-find components to meet their specific needs.

With the principle of "Quality Parts,Customers Priority,Honest Operation,and Considerate Service",our business mainly focus on the distribution of electronic components. Line cards we deal with include Microchip,ALPS,ROHM,Xilinx,Pulse,ON,Everlight and Freescale. Main products comprise IC,Modules,Potentiometer,IC Socket,Relay,Connector.Our parts cover such applications as commercial,industrial, and automotives areas.

We are looking forward to setting up business relationship with you and hope to provide you with the best service and solution. Let us make a better world for our industry!



Contact us

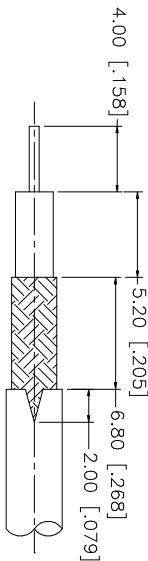
Tel: +86-755-8981 8866 Fax: +86-755-8427 6832

Email & Skype: info@chipsmall.com Web: www.chipsmall.com

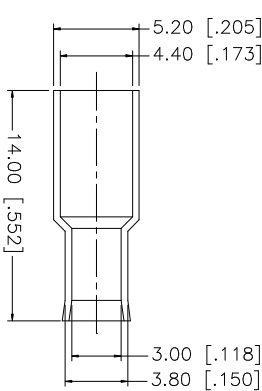
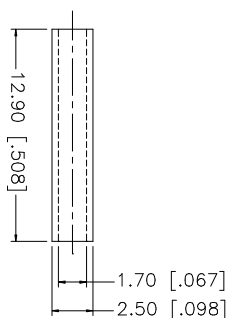
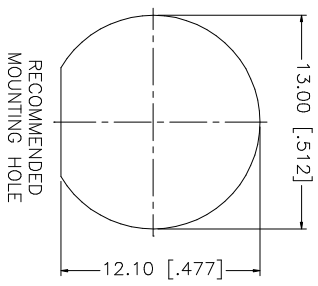
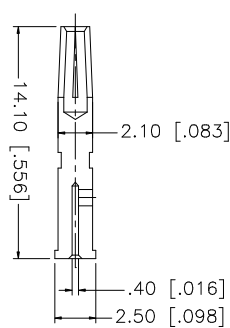
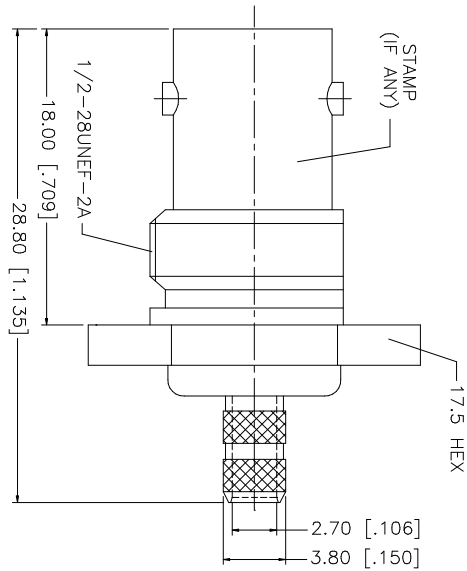
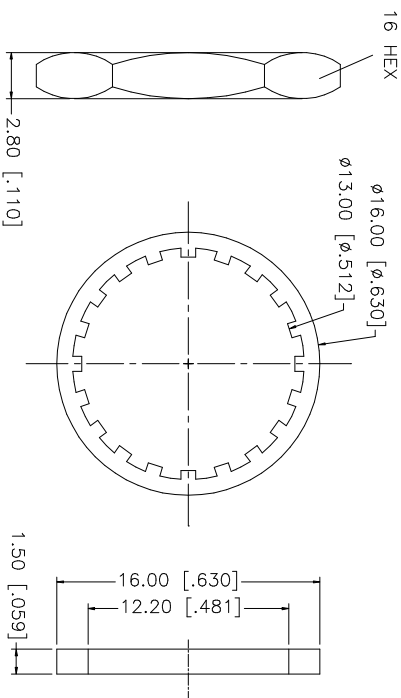
Address: A1208, Overseas Decoration Building, #122 Zhenhua RD., Futian, Shenzhen, China



DESCRIPTION		
REV.	DATE	
A	10/12/03	MODIFY DRAWING FORMAT



RECOMMENDED CABLE STRIPPING DIMENSIONS



- NOTE:
1. CRIMPED FERRULE
HEX CRIMP SIZE .178"
 2. CRIMPED CONTACT PIN
HEX CRIMP SIZE .068"

8	FERRULE	COPPER	NICKEL	1	UNLESS OTHERWISE SPECIFIED DIMENSIONS ARE IN MILLIMETERS. DIMENSIONS IN () ARE IN INCHES AND FOR CUSTOMER REFERENCE ONLY. UNLESS OTHERWISE SPECIFIED TOLERANCES FOR MILLIMETERS ARE: 0.5 – 8mm ± 0.20mm 8 – 30mm ± 0.40mm 30 – 120mm ± 0.50mm UNLESS OTHERWISE SPECIFIED TOLERANCES FOR INCHES ARE: .020 – .315 = ± 0.007* .315 – 1.180 = ± 0.015* 1.180 – 4.724 = ± 0.020*	DO NOT SCALE DRAWING	APPROVALS		DATE										
7	SLEEVE	DELFIN	NATURAL	1			DRAWN	G.R.S.	10/12/03										
6	HEX NUT	BRASS	NICKEL	1			CHECKED												
5	LOCK WASHER	BRASS	NICKEL	1			ISSUED												
4	GASKET	RUBBER	RED	1			SHEET	1 OF 1											
3	CONTACT PIN	PHOS. BRONZE	GOLD	1			PART NO. 112235												
2	INSULATOR	DELFIN	NATURAL	1			CAD FILE C:/112/112235.DWG												
1	BODY	BRASS	NICKEL	1			DWG. NO. 112235.DWG												
DESCRIPTION					MATERIAL					FINISH					QTY				
Amphenol Connex																			
BNC BULKHEAD CRIMP JACK (FOR RG-179/U, 187A/U)																			

Amphenol Connex

BNC BULKHEAD CRIMP JACK
(FOR RG-179/U, 187A/U)

112235