



Chipsmall Limited consists of a professional team with an average of over 10 year of expertise in the distribution of electronic components. Based in Hongkong, we have already established firm and mutual-benefit business relationships with customers from,Europe,America and south Asia,supplying obsolete and hard-to-find components to meet their specific needs.

With the principle of “Quality Parts,Customers Priority,Honest Operation,and Considerate Service”,our business mainly focus on the distribution of electronic components. Line cards we deal with include Microchip,ALPS,ROHM,Xilinx,Pulse,ON,Everlight and Freescale. Main products comprise IC,Modules,Potentiometer,IC Socket,Relay,Connector.Our parts cover such applications as commercial,industrial, and automotives areas.

We are looking forward to setting up business relationship with you and hope to provide you with the best service and solution. Let us make a better world for our industry!



Contact us

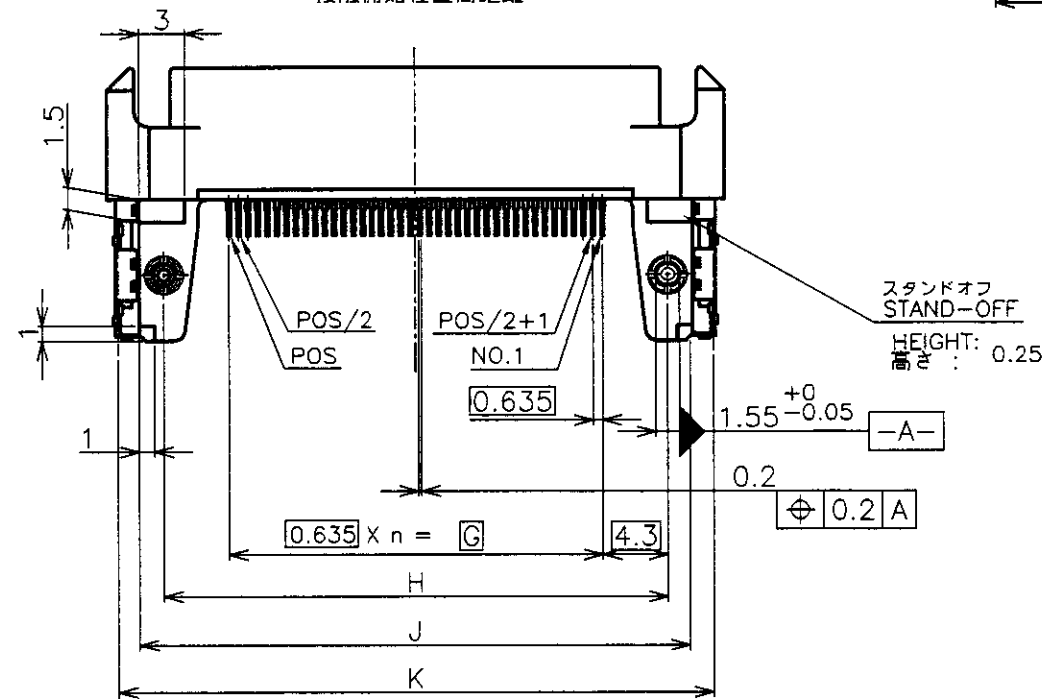
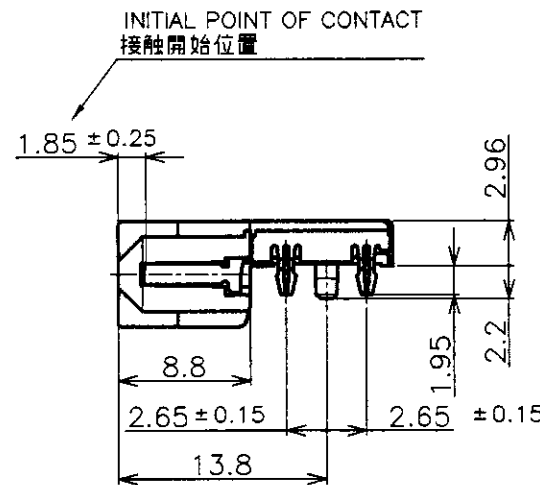
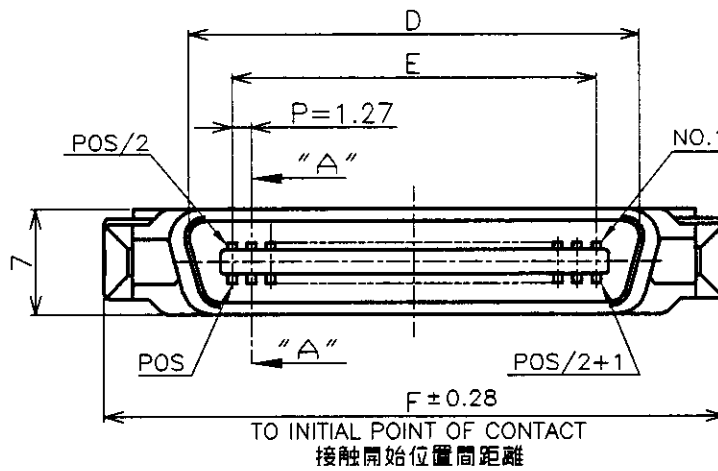
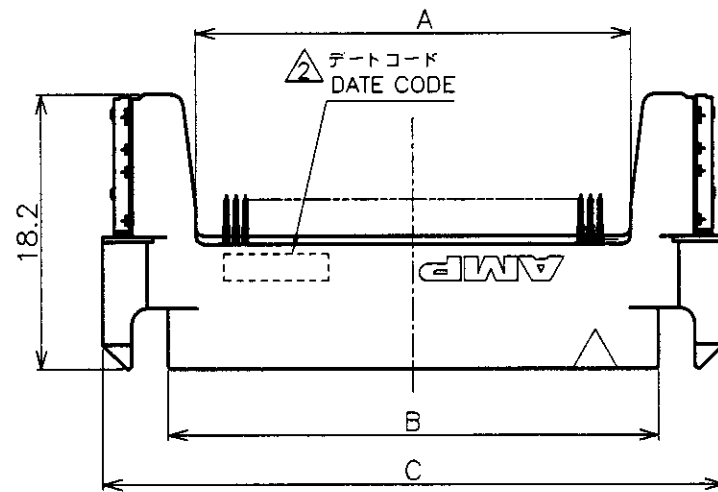
Tel: +86-755-8981 8866 Fax: +86-755-8427 6832

Email & Skype: info@chipsmall.com Web: www.chipsmall.com

Address: A1208, Overseas Decoration Building, #122 Zhenhua RD., Futian, Shenzhen, China



LOC	DIST	REVISIONS					
		P	LTR	DESCRIPTION	DATE	DWN	APVD
		0		RELEASED(FJ00-1409-97)	07OCT97	S.H	H.K
		A		REVISED(FJ00-1740-98)	24SEP98	S.H	Y.Y
		B		REVISED(FJ00-1195-00)	17.JUL'00	S.H	Y.Y



NOTE

- △ MATERIAL
 - (1) HOUSING : LCP(UL94V-0, BLACK)
 - (2) CONTACT : PHOSPHOR BRONZE
FINISH : CONTACT AREA ; Au PL. OVER 0.001 MIN. Ni PL.
SOLDERING AREA : 0.001 MIN. TIN-LEAD OVER 0.001 MIN. Ni PL.
 - (3) G-CONT. WITH RETENTION-LEG : BRASS
FINISH : 0.001 MIN. TIN-LEAD PL. OVER 0.001 MIN. Ni PL.
- △ INDICATE DATE CODE.
- △ THIS DIM. IS 1.6±0.08 WHEN THE CONTACT PUSH TO HOUSING.

注記

- △ 材料
 - (1)ハウジング：LCP(UL94V-0, 黒色)
 - (2)コンタクト：燐青銅 仕上げ：ニッケル下地めっき0.001以上
接触部：金めっき
タイン部：半田めっき0.001以上
 - (3)リテンションレグ付グランドコンタクト：黄銅
仕上げ：ニッケル下地めっき0.001以上, 半田めっき0.001以上
- △ デートコード表示
- △ ハウジングに押しつけたときの寸法は1.6±0.08とする。

1123283-9	0.0002	80	79	54.2	57.87	66.5	55.27	49.53	66.4	50.165	58.765	62.0	64.7
5-1123283-5	0.00076	40	39	28.8	32.47	41.1	29.87	24.13	41.0	24.765	33.365	36.6	39.3
1123283-5	0.0002	40	39	28.8	32.47	41.1	29.87	24.13	41.0	24.765	33.365	36.6	39.3
PART NO.	Au PL. THK	POS	n	A	B	C	D	E	F	G	H	J	K

THIS DRAWING IS A CONTROLLED DOCUMENT.

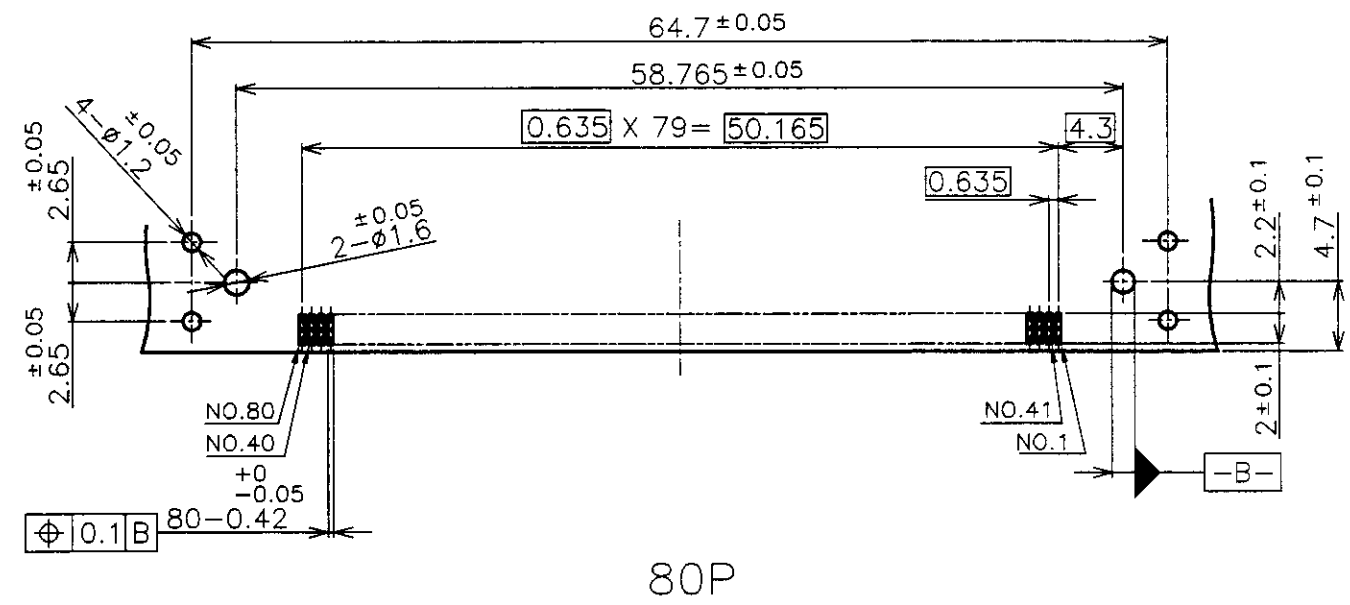
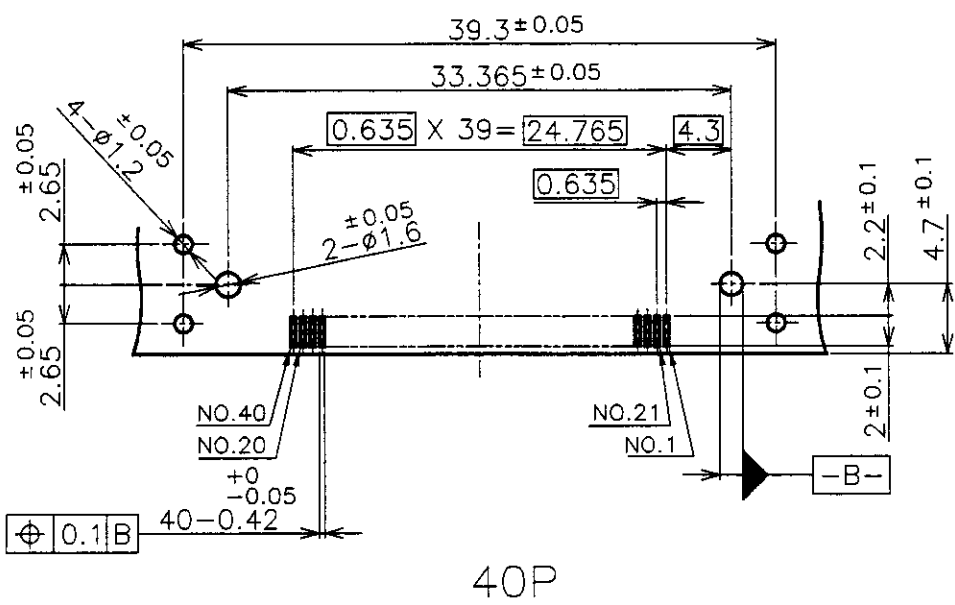
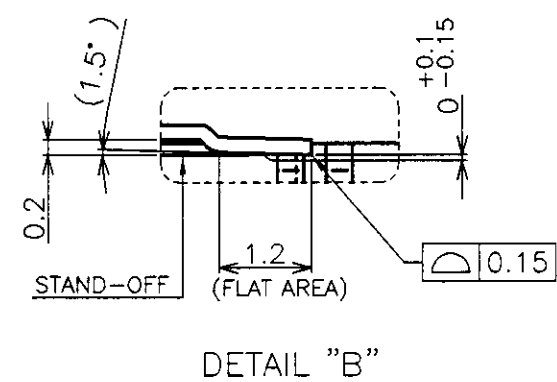
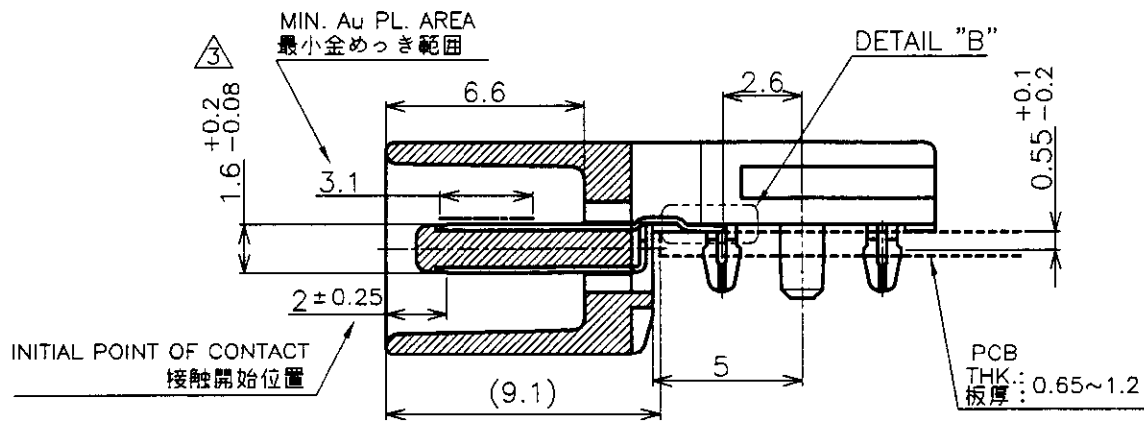
DIMENSIONS:	TOLERANCES UNLESS OTHERWISE SPECIFIED:
単位: 耗 MM	一般公差
0-PLC	± 0.2:10<
1-PLC	± 0.25:10>,30=<
2-PLC	± 0.3:30>
3-PLC	±
4-PLC	±
ANGLES	± 3'

MATERIAL	FINISH
材料	仕上
△	△

DWN	07/OCT/97
S.HASHIMOTO	
CHK	07/OCT/97
H.KODAMA	
APVD	07/OCT/97
H.KODAMA	
PRODUCT SPEC	108-5290
APPLICATION SPEC	
取付適用規格	
WEIGHT	-
CUSTOMER DRAWING	

WIRE RANGE 包含電線断面積		INSULATION DIA 被覆外径	
Tyco Electronics AMP K.K. Kawasaki, Japan			
NAME 名称 PLUG ASS'Y SMT TYPE, CHAMP.050(I) BLINDMATE WITH G-CONT.(P.C.B t=0.8mm)			
SIZE	CAGE CODE	DRAWING NO	RESTRICTED TO
A3	00779	1123283	-
SCALE	SHEET	REV	
尺度	1 OF 2	B	

LOC	DIST	REVISIONS					
		P	LTR	DESCRIPTION	DATE	DWN	APVD



RECOMMENDED PCB LAYOUT
推奨基板取付寸法

THIS DRAWING IS A CONTROLLED DOCUMENT.		DWN	AMP Tyco Electronics AMP K.K. Kawasaki, Japan	
DIMENSIONS: 単位: 耗 MM		CHK	NAME 名称 PLUG ASS'Y SMT TYPE, CHAMP.050(I) BLINDMATE WITH G-CONT.(P.C.B t=0.8mm)	
TOLERANCES UNLESS OTHERWISE SPECIFIED: 一般公差		APVD	SIZE	RESTRICTED TO
<ul style="list-style-type: none"> Ø-PLG ± 0.2:10=< 1-PLG ± 0.25:10>,30=< 2-PLG ± 0.3:30> 3-PLG ± 4-PLG ± ANGLES ± 3' 		PRODUCT SPEC 製品規格	CAGE CODE	
MATERIAL 材料		APPLICATION SPEC 取付適用規格	DRAWING NO 番号	
FINISH 仕上		WEIGHT	A3 00779	
		CUSTOMER DRAWING	1123283	
		SCALE 尺度	SHEET 2 OF 2	REV B