



Chipsmall Limited consists of a professional team with an average of over 10 year of expertise in the distribution of electronic components. Based in Hongkong, we have already established firm and mutual-benefit business relationships with customers from,Europe,America and south Asia,supplying obsolete and hard-to-find components to meet their specific needs.

With the principle of “Quality Parts,Customers Priority,Honest Operation,and Considerate Service”,our business mainly focus on the distribution of electronic components. Line cards we deal with include Microchip,ALPS,ROHM,Xilinx,Pulse,ON,Everlight and Freescale. Main products comprise IC,Modules,Potentiometer,IC Socket,Relay,Connector.Our parts cover such applications as commercial,industrial, and automotives areas.

We are looking forward to setting up business relationship with you and hope to provide you with the best service and solution. Let us make a better world for our industry!



Contact us

Tel: +86-755-8981 8866 Fax: +86-755-8427 6832

Email & Skype: info@chipsmall.com Web: www.chipsmall.com

Address: A1208, Overseas Decoration Building, #122 Zhenhua RD., Futian, Shenzhen, China



4

3

2

1

THIS DRAWING IS UNPUBLISHED.

RELEASED FOR PUBLICATION

, 19

© COPYRIGHT 19

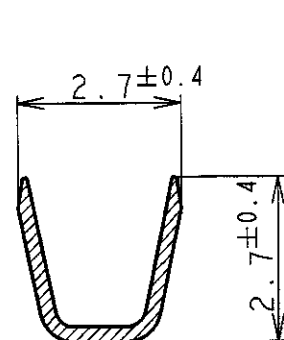
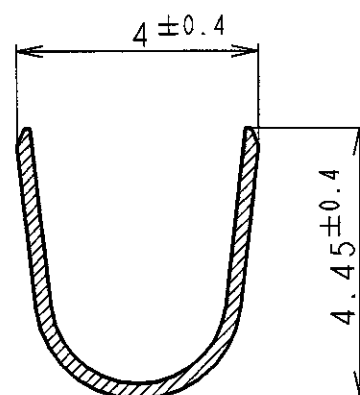
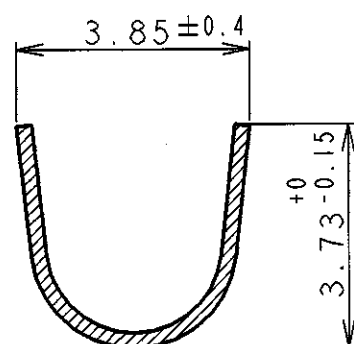
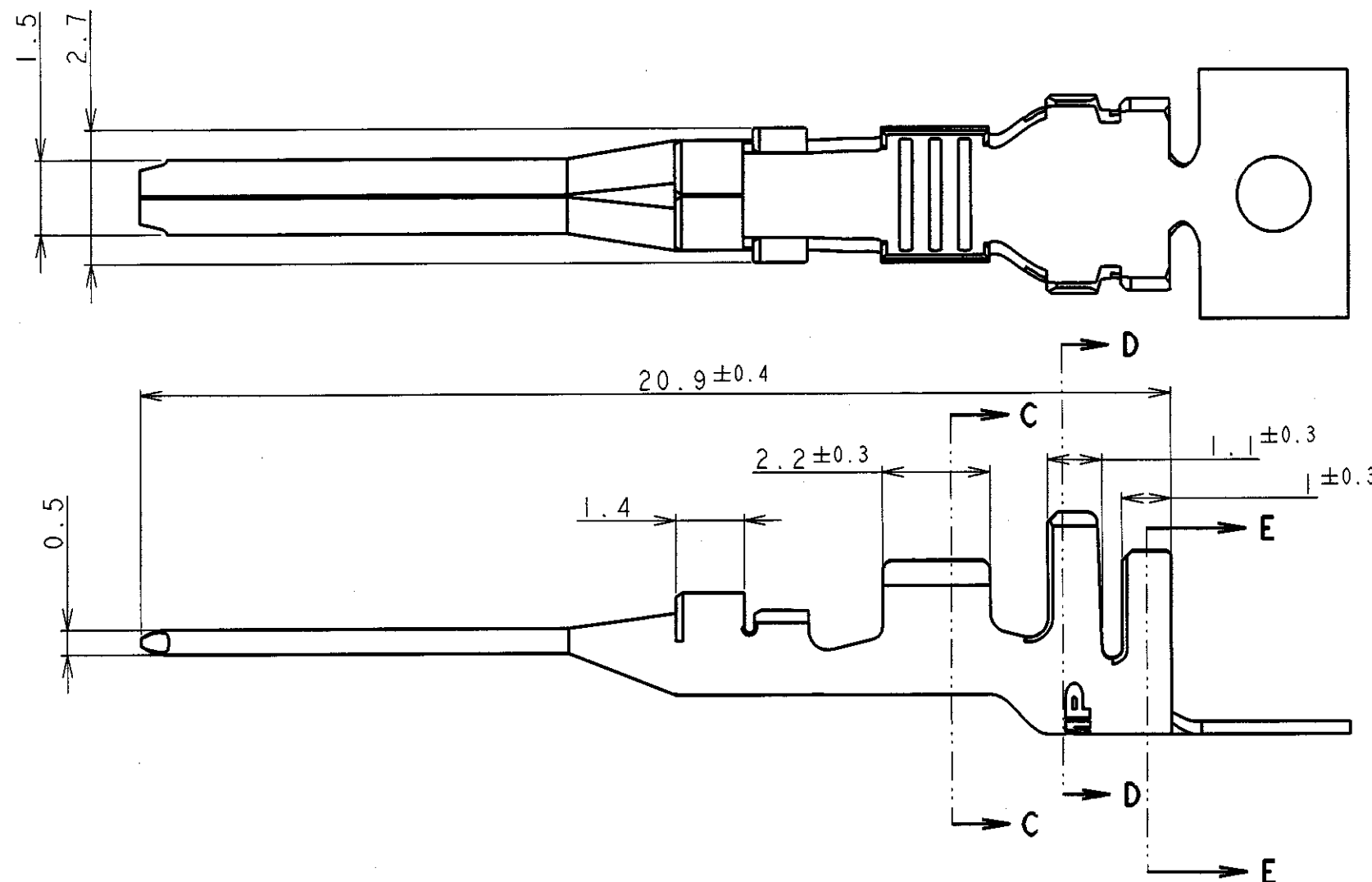
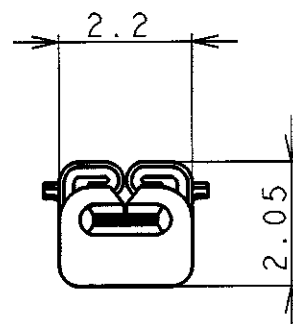
BY AMP INCORPORATED. ALL RIGHTS RESERVED.

LOC DIST

REVISIONS

変更

P	LTR	DESCRIPTION	ECN	DATE	DWN	APVD
	C	REVISED	FJ00-0401-99	9.MAR'99	CWL	

SECT
断面 C-CSECT
断面 D-DSECT
断面 E-E

NOTES:

1. APPLICABLE SPECIFICATIONS:
PRODUCT SPEC: 108-5616
APPLICATION SPEC: 114-5256

1123910-1

PART NUMBER

WIRE RANGE 絶縁電線断面積		0.51~1.38mm ² (AWG #20~#16)	INSULATION DIA 被覆外径		Ø1.8~3.1mm
AMP			日本イー・エム・ピー株式会社 Kawasaki, Japan		
NAME 名称			POWER TAB CONTACT FOR AMP MINI CT LATTICE CONNECTOR		
SIZE	CAGE CODE	DRAWING NO	RESTRICTED TO		
A3	00779	©-1123910			
SCALE 尺度		8:1	SHEET	OF	REV
			1	1	C

THIS DRAWING IS A CONTROLLED DOCUMENT FOR AMP INCORPORATED. IT IS SUBJECT TO CHANGE AND THE CONTROLLING ENGINEERING ORGANIZATION SHOULD BE CONTACTED FOR THE LATEST REVISION.		DWN W. L. CHOO	10. JUN '98
DIMENSIONS: 単位: mm		CHK J. TANIGAWA	11. JUN '98
TOLERANCES UNLESS OTHERWISE SPECIFIED: 一般公差		APVD D. Kubonaka	9. MAR '99
10 ≥ : ±0.2 30 ≥ > 10 : ±0.25 100 ≥ > 30 : ±0.3 ANGLE : ±3°		PRODUCT SPEC 製品規格	108-5616
MATERIAL 材料		APPLICATION SPEC 取付適用規格	114-5256
COPPER ALLOY		WEIGHT	-
FINISH 仕上		CUSTOMER DRAWING	
PRE-TIN			