



Chipsmall Limited consists of a professional team with an average of over 10 year of expertise in the distribution of electronic components. Based in Hongkong, we have already established firm and mutual-benefit business relationships with customers from,Europe,America and south Asia,supplying obsolete and hard-to-find components to meet their specific needs.

With the principle of "Quality Parts,Customers Priority,Honest Operation,and Considerate Service",our business mainly focus on the distribution of electronic components. Line cards we deal with include Microchip,ALPS,ROHM,Xilinx,Pulse,ON,Everlight and Freescale. Main products comprise IC,Modules,Potentiometer,IC Socket,Relay,Connector.Our parts cover such applications as commercial,industrial, and automotives areas.

We are looking forward to setting up business relationship with you and hope to provide you with the best service and solution. Let us make a better world for our industry!



## Contact us

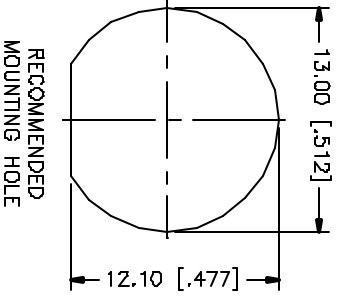
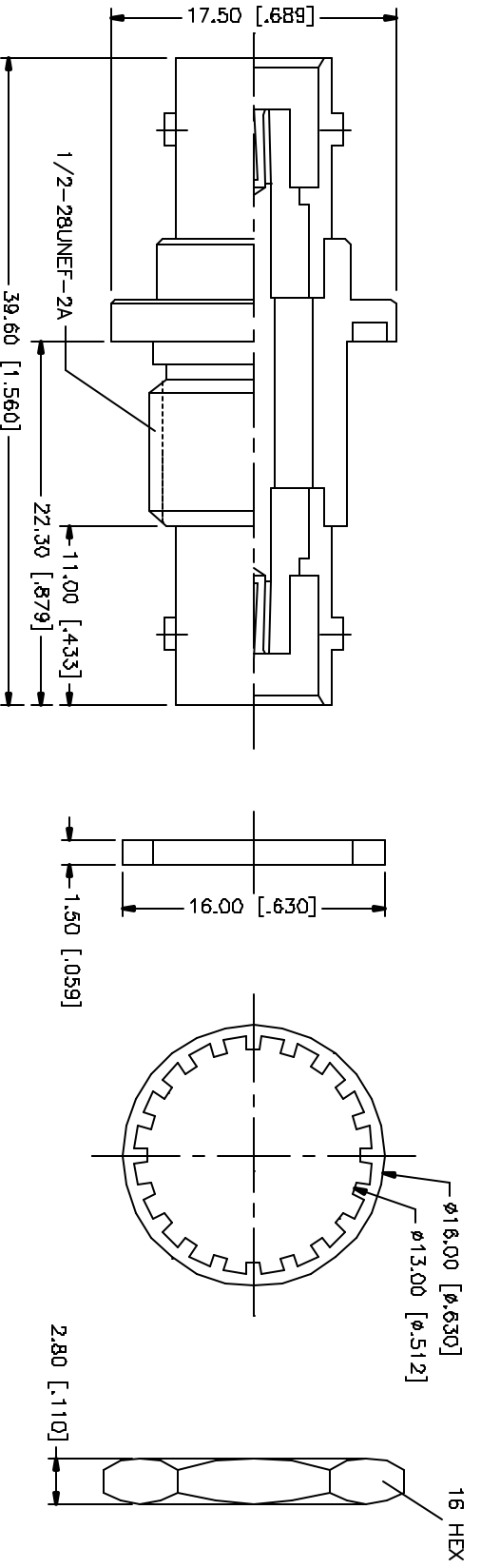
Tel: +86-755-8981 8866 Fax: +86-755-8427 6832

Email & Skype: info@chipsmall.com Web: www.chipsmall.com

Address: A1208, Overseas Decoration Building, #122 Zhenhua RD., Futian, Shenzhen, China



REV.	DATE	DESCRIPTION
NC	05/01/04	INITIAL RELEASE



NOTE:  
1. MAX. PANEL THICKNESS = 7mm

QTY	DESCRIPTION	MATERIAL	FINISH	QTY	UNIT
1	HEX NUT	BRASS	NICKEL	1	
1	LOCK WASHER	BRASS	NICKEL	1	
1	GASKET	RUBBER	RED	1	
1	CONTACT PIN	PHOS. BRONZE	GOLD	1	
1	INSULATOR	DELFIN	NATURAL	1	
1	HOUSING/BODY	BRASS	NICKEL	1	

APPROVALS	DATE
DRWN: G.R.S.	05/01/04
CHECKED:	
ISSUED:	
SHEET: 1 OF 1	

PART DESCRIPTION	DWG. NO.	REV.	SIZE	SCALE
BNC FEMALE TO FEMALE BULKHEAD ADAPTER	112434	NC	A	NA

UNLESS OTHERWISE SPECIFIED DIMENSIONS ARE IN MILLIMETERS AND DECIMALS THEREOF. DIMENSIONS FOR MILLIMETERS ARE: 0.15 - 30mm ± 0.20mm, 30 - 120mm ± 0.40mm, 120 - 150mm ± 0.50mm. DIMENSIONS FOR INCHES ARE: .020 - .315 = ± 0.007", .315 - 1.180 = ± 0.015", 1.180 - 4.724 = ± 0.020".

DO NOT SCALE DRAWINGS

**Amphenol Connex**