



Chipsmall Limited consists of a professional team with an average of over 10 year of expertise in the distribution of electronic components. Based in Hongkong, we have already established firm and mutual-benefit business relationships with customers from,Europe,America and south Asia,supplying obsolete and hard-to-find components to meet their specific needs.

With the principle of "Quality Parts,Customers Priority,Honest Operation,and Considerate Service",our business mainly focus on the distribution of electronic components. Line cards we deal with include Microchip,ALPS,ROHM,Xilinx,Pulse,ON,Everlight and Freescale. Main products comprise IC,Modules,Potentiometer,IC Socket,Relay,Connector.Our parts cover such applications as commercial,industrial, and automotives areas.

We are looking forward to setting up business relationship with you and hope to provide you with the best service and solution. Let us make a better world for our industry!



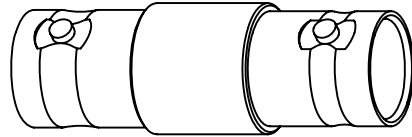
## Contact us

Tel: +86-755-8981 8866 Fax: +86-755-8427 6832

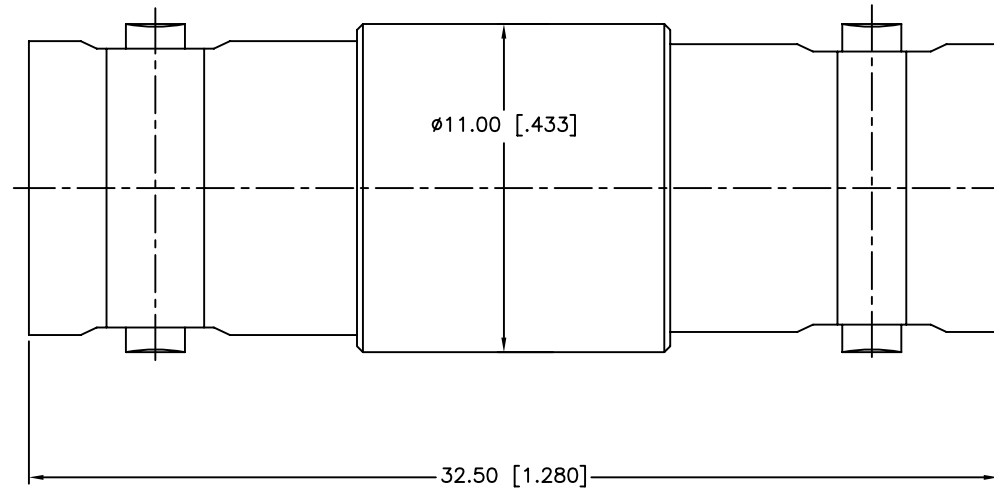
Email & Skype: info@chipsmall.com Web: www.chipsmall.com

Address: A1208, Overseas Decoration Building, #122 Zhenhua RD., Futian, Shenzhen, China





REV.	DATE	ECR NO.	DESCRIPTION
NC	10/16/08	XXXXXX	INITIAL RELEASE
A	10/28/13	2543	UPDATE DRAWING FORMAT



1. IMPEDANCE: 50 OHM
2. FREQUENCY RANGE: 0-4 GHZ
3. VSWR: 1.3 MAX.
4. DIELECTRIC WITHSTANDING VOLTAGE: 1500 VRMS, MIN.
5. DURABILITY: 500 CYCLES MIN.
6. TEMPERATURE RANGE: -65°C TO +165°C

QTY	DESCRIPTION	MATERIAL	FINISH
1	CONTACT PIN	PHOSPHOR BRONZE	GOLD
1	INSULATOR	PTFE	NATURAL
1	BODY	BRASS	NICKEL
1	HOUSING	BRASS	NICKEL

UNLESS OTHERWISE SPECIFIED DIMENSIONS ARE IN MILLIMETERS. DIMENSIONS IN [ ] ARE IN INCHES AND FOR CUSTOMER REFERENCE ONLY.  
 UNLESS OTHERWISE SPECIFIED  
 TOLERANCES FOR MILLIMETERS ARE:  
 <math>< .05 \pm 0.05\text{mm}</math>  
 0.5 - 6mm  $\pm 0.10\text{mm}</math>  
 6 - 30mm  $\pm 0.20\text{mm}</math>  
 30 - 120mm  $\pm 0.30\text{mm}</math>  
 ANGLES  $\pm 1^\circ$   
 UNLESS OTHERWISE SPECIFIED  
 TOLERANCES FOR INCHES ARE:  
 <math>< .020 \pm 0.002''</math>  
 .020 - .236  $\pm 0.004''</math>  
 .236 - 1.180  $\pm 0.007''</math>  
 1.180 - 4.724  $\pm 0.012''</math>  
 ANGLES  $\pm 1^\circ$   
 DO NOT SCALE DRAWING$$$$$$

APPROVALS	DATE
DRAWN M.ZHANG	10/28/13
CHECKED	
ISSUED	
SHEET 1 OF 1	
CAD FILE	C:/CONNEX/112445T.DWG

<h1>Amphenol Connex</h1>			
PART DESCRIPTION <b>BNC FEMALE TO FEMALE ADAPTER</b>			
PART NO. <b>112445T</b>			
DWG. NO.	112445T.DWG	REV.	A
SIZE	A	SCALE	NA