



Chipsmall Limited consists of a professional team with an average of over 10 year of expertise in the distribution of electronic components. Based in Hongkong, we have already established firm and mutual-benefit business relationships with customers from,Europe,America and south Asia,supplying obsolete and hard-to-find components to meet their specific needs.

With the principle of "Quality Parts,Customers Priority,Honest Operation,and Considerate Service",our business mainly focus on the distribution of electronic components. Line cards we deal with include Microchip,ALPS,ROHM,Xilinx,Pulse,ON,Everlight and Freescale. Main products comprise IC,Modules,Potentiometer,IC Socket,Relay,Connector.Our parts cover such applications as commercial,industrial, and automotives areas.

We are looking forward to setting up business relationship with you and hope to provide you with the best service and solution. Let us make a better world for our industry!



Contact us

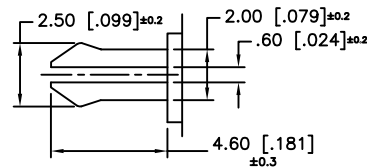
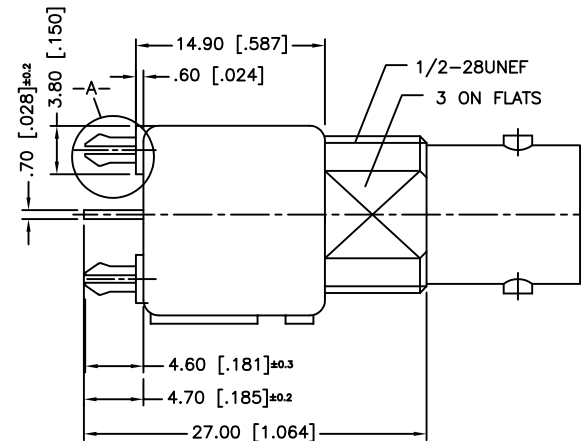
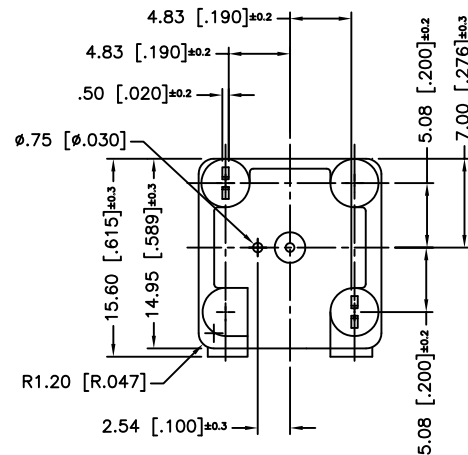
Tel: +86-755-8981 8866 Fax: +86-755-8427 6832

Email & Skype: info@chipsmall.com Web: www.chipsmall.com

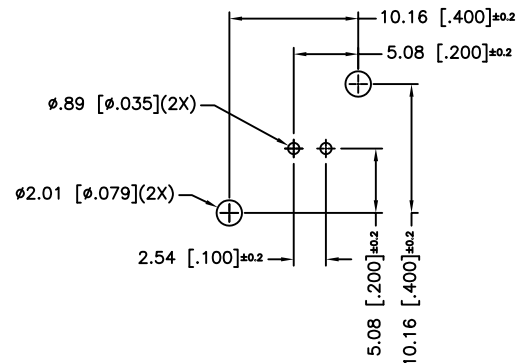
Address: A1208, Overseas Decoration Building, #122 Zhenhua RD., Futian, Shenzhen, China



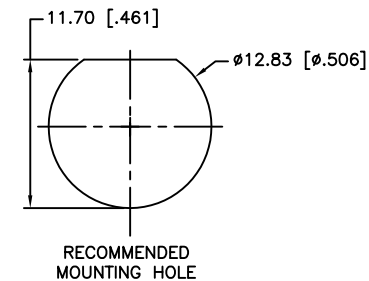
REV.	DATE	ECR NO	DESCRIPTION
A	--	--	RELEASE TO MFG.
B	01/10/04	--	UPDATE DRAWING FORMAT/ MODIFY MOUNTING POSTS
C	02/25/10	2012	HARDWARES REMOVED



DETAIL -A-
(2X SCALE)



PCB MOUNTING HOLES



NOTE:
1. MAX. PANEL THICKNESS = 5mm

				<p>UNLESS OTHERWISE SPECIFIED DIMENSIONS ARE IN MILLIMETERS. DIMENSIONS IN [] ARE IN INCHES AND FOR CUSTOMER REFERENCE ONLY.</p> <p>UNLESS OTHERWISE SPECIFIED TOLERANCES FOR MILLIMETERS ARE: 0.5 – 8mm ± 0.20mm 8 – 30mm ± 0.40mm 30 – 120mm ± 0.50mm</p> <p>UNLESS OTHERWISE SPECIFIED TOLERANCES FOR INCHES ARE: .020 – .315 = ± 0.007” .315 – 1.180 = ± 0.015” 1.180 – 4.724 = ± 0.020”</p>	APPROVALS		DATE		Amphenol Connex									
					DRAWN	CLEMENT	02/25/10											
					CHECKED			PART DESCRIPTION										
					ISSUED			BNC STRAIGHT PC MOUNT RECEPT. JACK										
					SHEET	1 OF 1		PART NO.										
5	MOUNTING POST	BRASS	TIN PLATING				112495											
4	POST	COPPER	TIN PLATING															
3	CONTACT PIN	PHOS. BRONZE	GOLD															
2	INSULATOR	POLY PRO.	NATURAL															
1	BODY	ZINC DIE CAST	NICKEL															
	DESCRIPTION	MATERIAL	FINISH	QTY	DO NOT SCALE DRAWING		CAD FILE		C:/112/112495.DWG		DWG. NO.	112495.DWG	REV.	C	SIZE	A	SCALE	NA