



Chipsmall Limited consists of a professional team with an average of over 10 year of expertise in the distribution of electronic components. Based in Hongkong, we have already established firm and mutual-benefit business relationships with customers from,Europe,America and south Asia,supplying obsolete and hard-to-find components to meet their specific needs.

With the principle of “Quality Parts,Customers Priority,Honest Operation,and Considerate Service”,our business mainly focus on the distribution of electronic components. Line cards we deal with include Microchip,ALPS,ROHM,Xilinx,Pulse,ON,Everlight and Freescale. Main products comprise IC,Modules,Potentiometer,IC Socket,Relay,Connector.Our parts cover such applications as commercial,industrial, and automotives areas.

We are looking forward to setting up business relationship with you and hope to provide you with the best service and solution. Let us make a better world for our industry!



Contact us

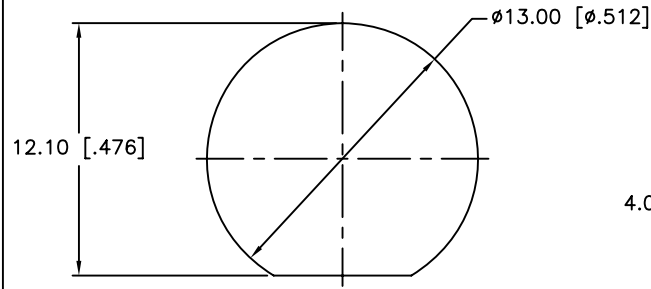
Tel: +86-755-8981 8866 Fax: +86-755-8427 6832

Email & Skype: info@chipsmall.com Web: www.chipsmall.com

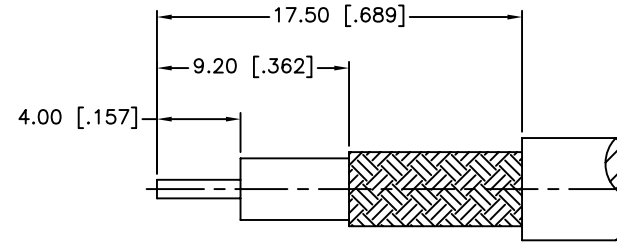
Address: A1208, Overseas Decoration Building, #122 Zhenhua RD., Futian, Shenzhen, China



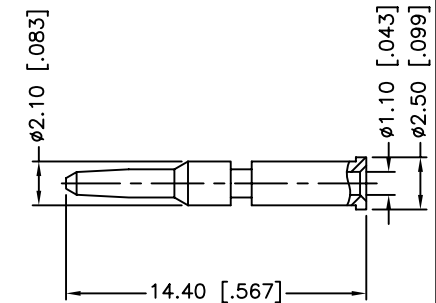
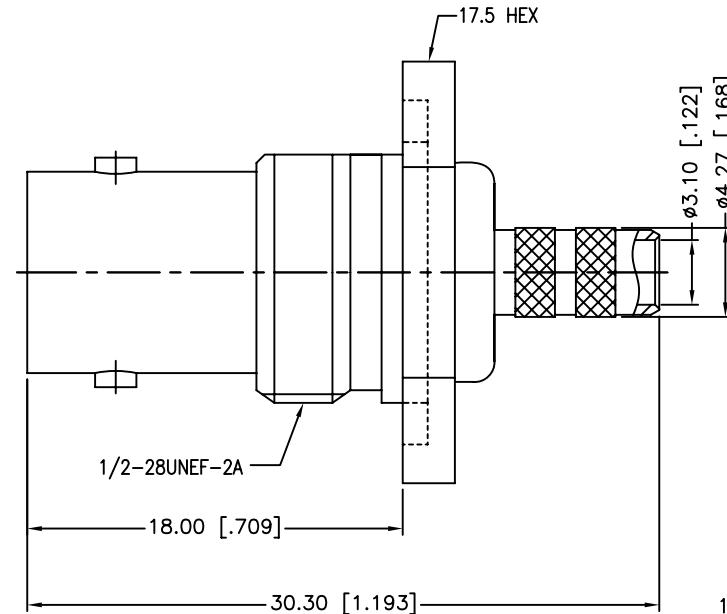
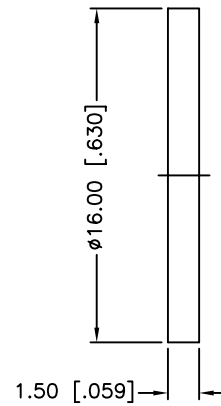
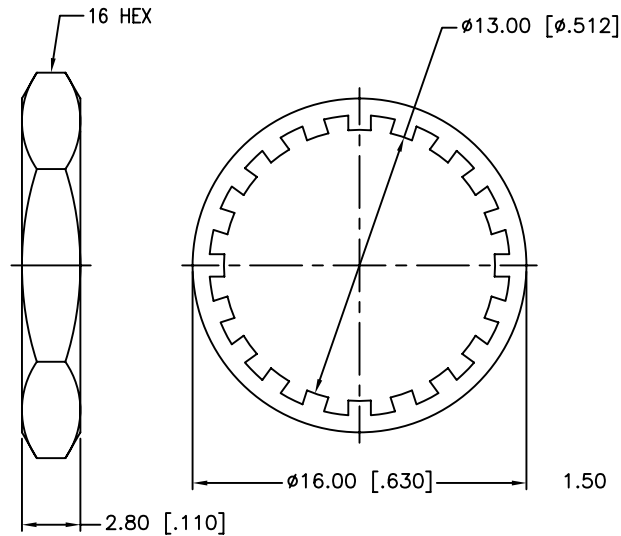
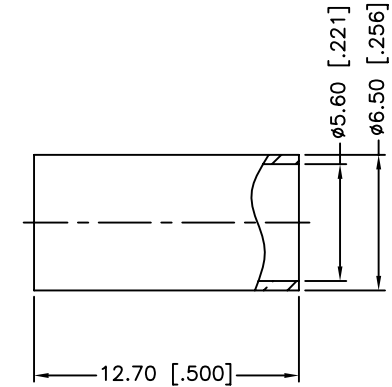
REV.	DATE	ECR NO.	DESCRIPTION
NC	09/23/10	XXXXXX	INITIAL RELEASE



RECOMMENDED
MOUNTING HOLE



RECOMMENDED
CABLE STRIPPING DIM'S



1. CRIMPED FERRULE HEX CRIMP SIZE .213"
2. CRIMPED CONTACT PIN HEX CRIMP SIZE .068"
3. MAX. PANEL THICKNESS=3.5mm

9	FERRULE	BRASS	NICKEL	1	UNLESS OTHERWISE SPECIFIED DIMENSIONS ARE IN MILLIMETERS. DIMENSIONS IN [] ARE IN INCHES AND FOR CUSTOMER REFERENCE ONLY. UNLESS OTHERWISE SPECIFIED TOLERANCES FOR MILLIMETERS ARE: 0.5 – 8mm ± 0.20mm 8 – 30mm ± 0.40mm 30 – 120mm ± 0.50mm UNLESS OTHERWISE SPECIFIED TOLERANCES FOR INCHES ARE: .020 – .315 = ± 0.007" .315 – 1.180 = ± 0.015" 1.180 – 4.724 = ± 0.020"	APPROVALS		DATE		Amphenol Connex					
8	CONTACT PIN	BRASS	GOLD	1		DRAWN	M.ZHANG	09/23/10							
7	HEX NUT	BRASS	NICKEL	1		CHECKED									
6	LOCK WASHER	BRASS	NICKEL	1		ISSUED			PART DESCRIPTION BNC REVERSE BULKHEAD CRIMP JACK (FOR RG-55/U,142A/U,223/U,400/U CABLE)						
5	GASKET	RUBBER	RED	1		SHEET	1 OF 1								
4	BARREL	BRASS	NICKEL	1	DO NOT SCALE DRAWING	PART NO.					112505RP				
3	INSULATOR	PTFE	NATURAL	1		DWG. NO.					112505RP.DWG				
2	BODY	BRASS	NICKEL	1		C:/CONNEX/112505RP.DWG					REV. B				
1	HOUSING	BRASS	NICKEL	1							SIZE A				
	DESCRIPTION	MATERIAL	FINISH	QTY							SCALE NA				