



Chipsmall Limited consists of a professional team with an average of over 10 year of expertise in the distribution of electronic components. Based in Hongkong, we have already established firm and mutual-benefit business relationships with customers from,Europe,America and south Asia,supplying obsolete and hard-to-find components to meet their specific needs.

With the principle of “Quality Parts,Customers Priority,Honest Operation,and Considerate Service”,our business mainly focus on the distribution of electronic components. Line cards we deal with include Microchip,ALPS,ROHM,Xilinx,Pulse,ON,Everlight and Freescale. Main products comprise IC,Modules,Potentiometer,IC Socket,Relay,Connector.Our parts cover such applications as commercial,industrial, and automotives areas.

We are looking forward to setting up business relationship with you and hope to provide you with the best service and solution. Let us make a better world for our industry!



Contact us

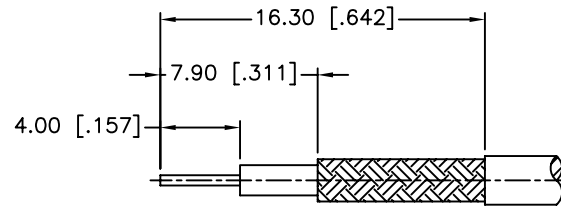
Tel: +86-755-8981 8866 Fax: +86-755-8427 6832

Email & Skype: info@chipsmall.com Web: www.chipsmall.com

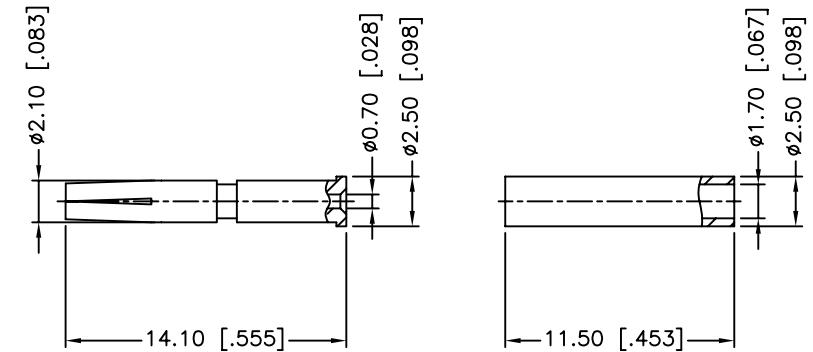
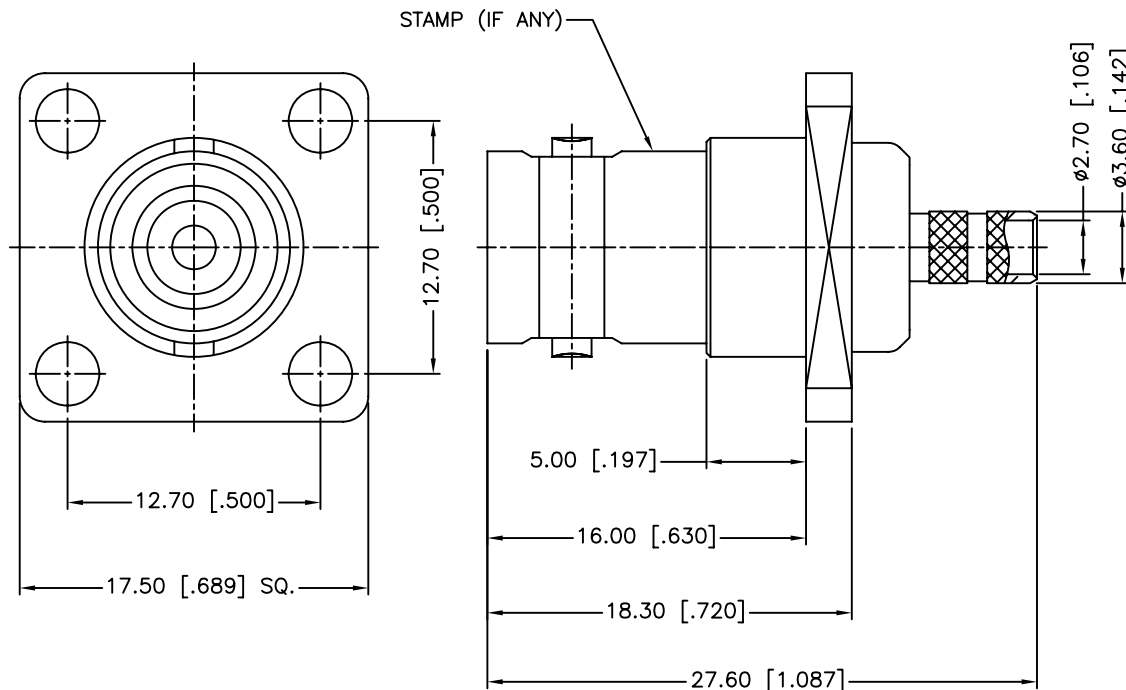
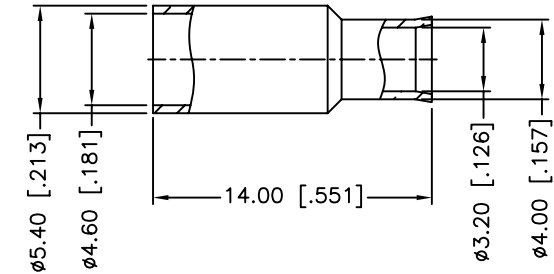
Address: A1208, Overseas Decoration Building, #122 Zhenhua RD., Futian, Shenzhen, China



| REV. | DATE | ECR NO. | DESCRIPTION |
|------|----------|---------|-----------------|
| NC | 12/21/11 | XXXXXX | INITIAL RELEASE |



RECOMMENDED
CABLE STRIPPING DIM'S



1. IMPEDANCE: 50 OHM
2. FREQUENCY RANGE: DC 0-1 GHz
3. VSWR(RETURN LOSS): 1.5, MAX.
4. DIELECTRIC WITHSTANDING VOLTAGE: 1500 VRMS, MIN.
5. DURABILITY: 500 CYCLES MIN.
6. TEMPERATURE RANGE: - 40°C to +155°C
7. CRIMPED FERRULE HEX CRIMP SIZE .187"
8. CRIMPED CONTACT PIN HEX CRIMP SIZE .068"

| | | | | | | | | | | | | |
|--|-------------|-----------------|---------|---|-----------|---------|----------|--|--|--|--|--|
| UNLESS OTHERWISE SPECIFIED DIMENSIONS ARE IN MILLIMETERS. DIMENSIONS IN [] ARE IN INCHES AND FOR CUSTOMER REFERENCE ONLY. | | | | | APPROVALS | | DATE | | <h1>Amphenol Connex</h1> | | | |
| 5 | FERRULE | BRASS | NICKEL | 1 | DRAWN | M.ZHANG | 12/21/11 | | | | | |
| 4 | SLEEVE | DELIN | NICKEL | 1 | CHECKED | | | | PART DESCRIPTION | | | |
| 3 | CONTACT PIN | PHOSPHOR BRONZE | GOLD | 1 | ISSUED | | | | BNC PANEL CRIMP JACK | | | |
| 2 | INSULATOR | PTFE | NATURAL | 1 | SHEET | 1 OF 1 | | | (FOR RG-174/U,188A/U,316/U,316U/D CABLE) | | | |
| 1 | BODY | BRASS | NICKEL | 1 | | | | | PART NO. | | | |
| | | | | | | | | | 112530 | | | |
| | | | | | | | | | DWG. NO. | | | |
| | | | | | | | | | 112530.DWG | | | |
| | | | | | | | | | REV. NC | | | |
| | | | | | | | | | SIZE A | | | |
| | | | | | | | | | SCALE NA | | | |