



Chipsmall Limited consists of a professional team with an average of over 10 year of expertise in the distribution of electronic components. Based in Hongkong, we have already established firm and mutual-benefit business relationships with customers from,Europe,America and south Asia,supplying obsolete and hard-to-find components to meet their specific needs.

With the principle of “Quality Parts,Customers Priority,Honest Operation,and Considerate Service”,our business mainly focus on the distribution of electronic components. Line cards we deal with include Microchip,ALPS,ROHM,Xilinx,Pulse,ON,Everlight and Freescale. Main products comprise IC,Modules,Potentiometer,IC Socket,Relay,Connector.Our parts cover such applications as commercial,industrial, and automotives areas.

We are looking forward to setting up business relationship with you and hope to provide you with the best service and solution. Let us make a better world for our industry!



## Contact us

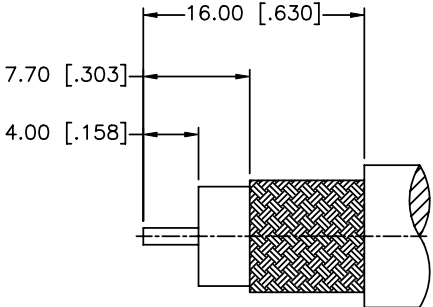
Tel: +86-755-8981 8866 Fax: +86-755-8427 6832

Email & Skype: [info@chipsmall.com](mailto:info@chipsmall.com) Web: [www.chipsmall.com](http://www.chipsmall.com)

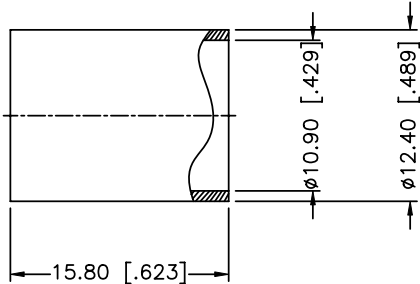
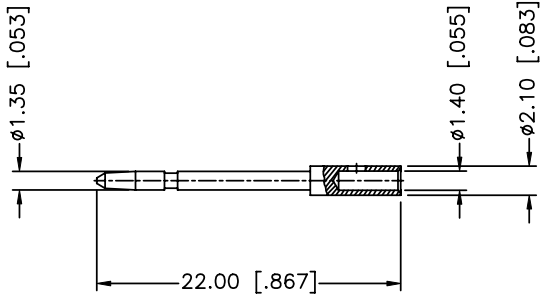
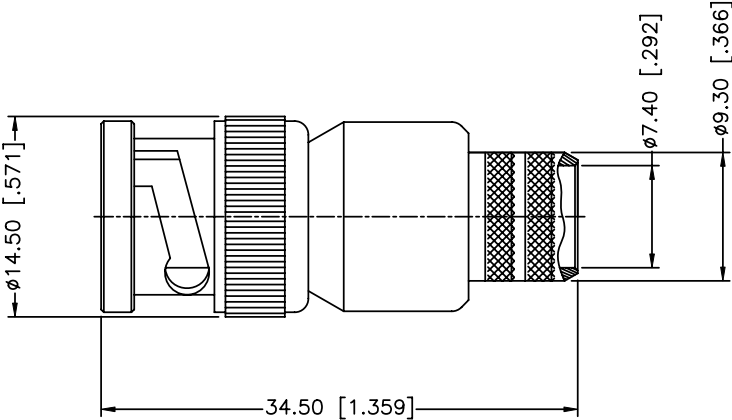
Address: A1208, Overseas Decoration Building, #122 Zhenhua RD., Futian, Shenzhen, China



REV.	DATE	ECR NO.	DESCRIPTION
NC	02/20/03	XXXX	INITIAL RELEASE
A	08/15/04	XXXX	UPDATE DRAWING FORMAT/MODIFY CONTACT PIN
B	02/19/13	2450	CORRECT I.D. OF CONTACT PIN, CORRECT PART DESCRIPTION, UPDATE DRAWING FORMAT



RECOMMENDED  
CABLE STRIPPING DIM'S



1. IMPEDENCE:75 OHM
2. FREQUENCE RANGE:DC-4 GHz
3. DIELECTRIC WITHSTANDING VOLTAGE:1500 VRMS
4. INSULATION RESISTANCE:5000 MOHMS MIN.
5. DURABILITY:500 CYCLES
6. CRIMPED FERRULE HEX CRIMP SIZE .429"
7. CRIMPED CONTACT PIN HEX CRIMP SIZE .068"
8. TEMPERATURE RANGE:-65°C TO +165°C

10	FERRULE	BRASS	NICKEL	1
9	CONTACT PIN	BRASS	GOLD	1
8	SHELL	BRASS	NICKEL	1
7	GASKET	RUBBER	RED	1
6	RETAINER RING	BRASS	NICKEL	1
5	SPRING	SK5	NICKEL	1
4	WASHER	BRASS	NICKEL	1
3	BARREL	BRASS	NICKEL	1
2	INSULATOR	PTFE	NATURAL	1
1	BODY	BRASS	NICKEL	1
	DESCRIPTION	MATERIAL	FINISH	QTY

UNLESS OTHERWISE SPECIFIED DIMENSIONS ARE IN MILLIMETERS. DIMENSIONS IN [ ] ARE IN INCHES AND FOR CUSTOMER REFERENCE ONLY.  
UNLESS OTHERWISE SPECIFIED TOLERANCES FOR MILLIMETERS ARE:  
0.5 - 6mm ± 0.10mm  
6 - 30mm ± 0.20mm  
30 - 120mm ± 0.30mm  
ANGLES ± 1°  
UNLESS OTHERWISE SPECIFIED TOLERANCES FOR INCHES ARE:  
<.020 ± 0.002"  
.020 - .236 ± 0.004"  
.236 - 1.180 ± 0.007"  
1.180 - 4.724 ± 0.012"  
ANGLES ± 1°  
DO NOT SCALE DRAWING

APPROVALS	DATE
DRAWN J.JI	02/19/13
CHECKED	
ISSUED	
SHEET 1 OF 1	
CAD FILE Y:/CONNEX/112576.DWG	

Amphenol Connex			
PART DESCRIPTION			
BNC CRIMP PLUG FOR M17/6-RG11 CABLE			
PART NO.			
112576			
DWG. NO.	112576	REV.	B
SIZE	A	SCALE	NA