



Chipsmall Limited consists of a professional team with an average of over 10 year of expertise in the distribution of electronic components. Based in Hongkong, we have already established firm and mutual-benefit business relationships with customers from,Europe,America and south Asia,supplying obsolete and hard-to-find components to meet their specific needs.

With the principle of “Quality Parts,Customers Priority,Honest Operation,and Considerate Service”,our business mainly focus on the distribution of electronic components. Line cards we deal with include Microchip,ALPS,ROHM,Xilinx,Pulse,ON,Everlight and Freescale. Main products comprise IC,Modules,Potentiometer,IC Socket,Relay,Connector.Our parts cover such applications as commercial,industrial, and automotives areas.

We are looking forward to setting up business relationship with you and hope to provide you with the best service and solution. Let us make a better world for our industry!



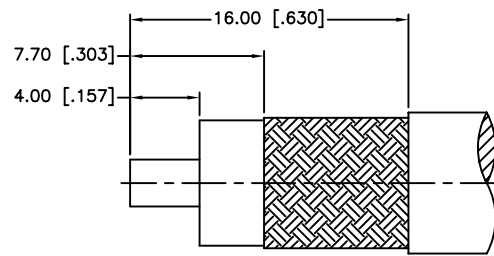
Contact us

Tel: +86-755-8981 8866 Fax: +86-755-8427 6832

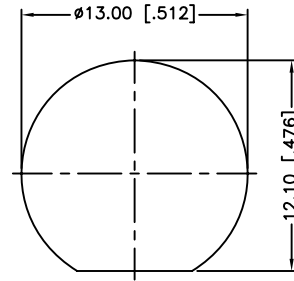
Email & Skype: info@chipsmall.com Web: www.chipsmall.com

Address: A1208, Overseas Decoration Building, #122 Zhenhua RD., Futian, Shenzhen, China



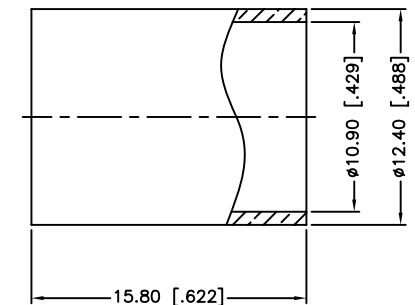
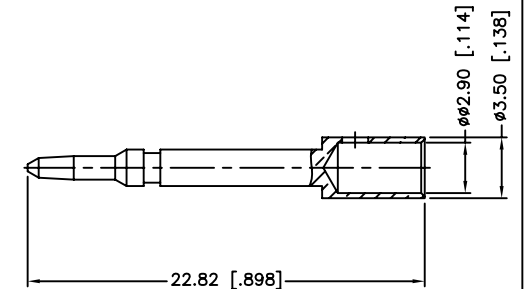
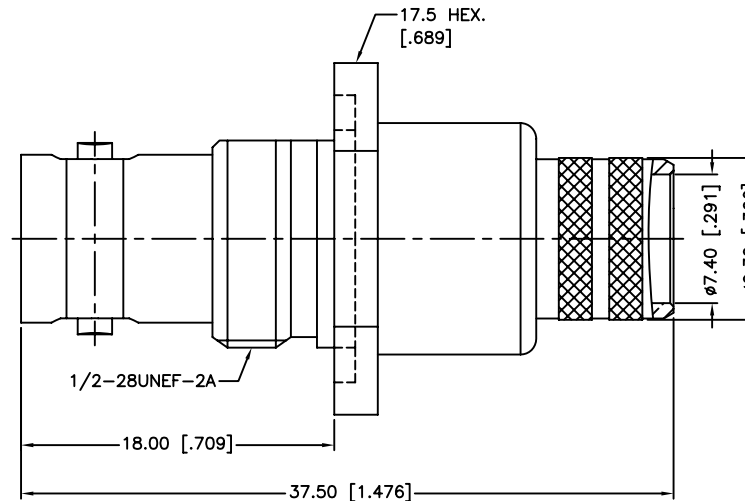
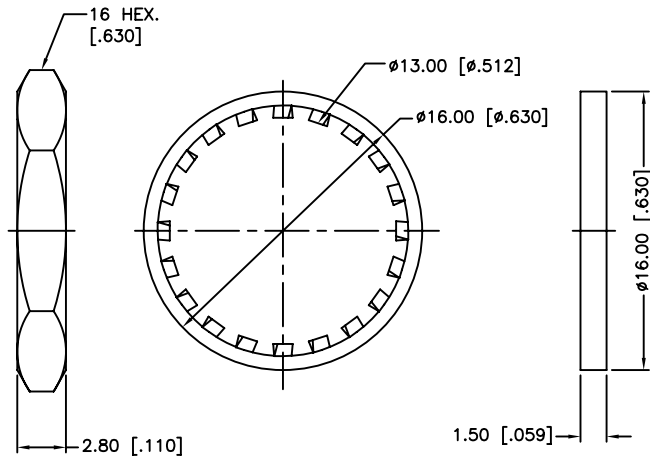


RECOMMENDED
CABLE STRIPPING DIM'S



RECOMMENDED
MOUNTING HOLE

REV.	DATE	ECR NO.	DESCRIPTION
NC	11/20/00	XXXXXX	INITIAL RELEASE
A	06/06/13	2478	UPDATE DRAWING FORMAT, ADD ELECTRICAL & MECHANICAL NOTES



1. IMPEDANCE: 50 OHM
2. FREQUENCY RANGE: DC-4 GHZ
3. VSWR: 1.3 MAX.
4. DIELECTRIC WITHSTANDING VOLTAGE: 1500 VRMS, MIN.
5. DURABILITY: 500 CYCLES MIN.
6. TEMPERATURE RANGE: -65°C TO +165°C
7. CRIMPED FERRULE
HEX CRIMP SIZE .429"
8. CRIMPED CONTACT PIN
HEX CRIMP SIZE .118"
9. MAX. PANEL THICKNESS=3.5mm

9	FERRULE	BRASS	NICKEL	1	<div>UNLESS OTHERWISE SPECIFIED DIMENSIONS ARE IN MILLIMETERS. DIMENSIONS IN [] ARE IN INCHES AND FOR CUSTOMER REFERENCE ONLY.</div> <div>UNLESS OTHERWISE SPECIFIED TOLERANCES FOR MILLIMETERS ARE:</div> <div>0.5 – 6mm ± 0.05mm</div> <div>0.5 – 6mm ± 0.10mm</div> <div>6 – 30mm ± 0.20mm</div> <div>30 – 120mm ± 0.30mm</div> <div>ANGLES ± 1°</div> <div>UNLESS OTHERWISE SPECIFIED TOLERANCES FOR INCHES ARE:</div> <div><.020 ± 0.002"</div> <div>.020 – .236 ± 0.004"</div> <div>.236 – 1.180 ± 0.007"</div> <div>1.180 – 4.724 ± 0.012"</div> <div>ANGLES ± 1°</div>	APPROVALS	DATE	<div>Amphenol Connex</div>					
8	CONTACT PIN	BRASS	GOLD	1		DRAWN	M.ZHANG					06/06/13	
7	HEX NUT	BRASS	NICKEL	1		CHECKED							
6	LOCK WASHER	BRASS	NICKEL	1		ISSUED			PART DESCRIPTION <div>BNC REVERSE POLARITY BULKHEAD CRIMP JACK (FOR BELDEN 8214, 9913, 9914, LMR400 CABLE)</div>				
5	GASKET	SILICONE RUBBER	RED	1		SHEET	1 OF 1						
4	BARREL	BRASS	NICKEL	1					PART NO. <div>112604RP</div>				
3	INSULATOR	PTFE	NATURAL	1		CAD FILE	C:/CONNEX/112604RP.DWG						
2	BODY	BRASS	NICKEL	1					DWG. NO. 112604RP.DWG				
1	HOUSING	BRASS	NICKEL	1									
DO NOT SCALE DRAWING								REV.	A	SIZE	A	SCALE	NA
DESCRIPTION					MATERIAL		FINISH		QTY				