



Chipsmall Limited consists of a professional team with an average of over 10 year of expertise in the distribution of electronic components. Based in Hongkong, we have already established firm and mutual-benefit business relationships with customers from,Europe,America and south Asia,supplying obsolete and hard-to-find components to meet their specific needs.

With the principle of “Quality Parts,Customers Priority,Honest Operation,and Considerate Service”,our business mainly focus on the distribution of electronic components. Line cards we deal with include Microchip,ALPS,ROHM,Xilinx,Pulse,ON,Everlight and Freescale. Main products comprise IC,Modules,Potentiometer,IC Socket,Relay,Connector.Our parts cover such applications as commercial,industrial, and automotives areas.

We are looking forward to setting up business relationship with you and hope to provide you with the best service and solution. Let us make a better world for our industry!



Contact us

Tel: +86-755-8981 8866 Fax: +86-755-8427 6832

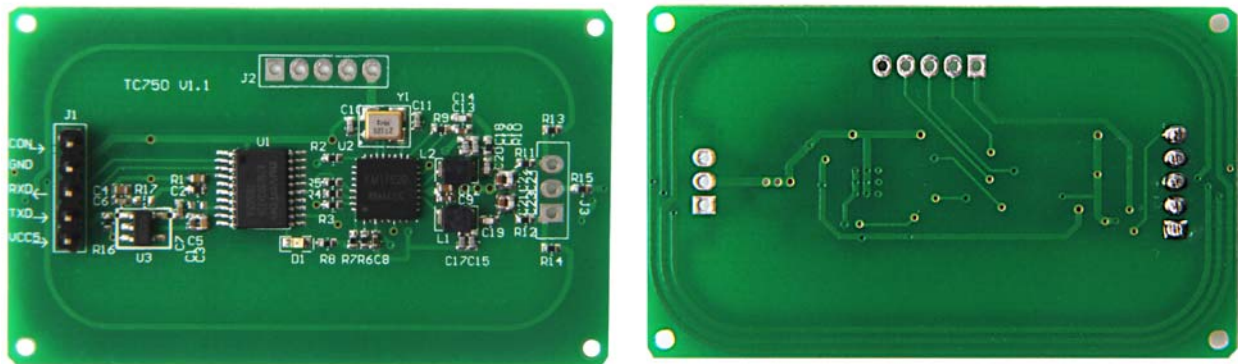
Email & Skype: info@chipsmall.com Web: www.chipsmall.com

Address: A1208, Overseas Decoration Building, #122 Zhenhua RD., Futian, Shenzhen, China



13.56Mhz RFID Module (Embedded PCB Antenna)

SKU 113990436



Description

This module are contactless smart card read module developed on the basis of the ISO/IEC14443A/B(-1,-2,-3,-4) international standard protocols. Provides the underlying.

Features

- Support ISO14443A/B

Application

- Access control
- online banking
- shopping online
- e-wallet recharge and balance enquiry
- internet security
- software locking
- digital signature
- customer bonus point preferential plan
- stored value、 social insurance、 ticket business、 bank、 tax administration、 industry and commerce、 telecommunications、 postal service、 computer security management

Technical Details

Dimensions	50mm x 30mm x 2.8mm
Weight	G.W 50g
Battery	Exclude
Parameter	
Standard	ISO/IEC 14443-A/B

Supporting Card	Mifare S50/S70/Ultralight/FM1208 etc
Interface	TTL
PowerSupply	DC5V(DC3.6v-DC5.5v)
DC5V(DC3.6v-DC5.5v)	>5cm (Depending on label size)
Baud Rate	9600-115200bit/s(Configurable , default 9600)
Operating Temperature	-10°C ~ 70°C
Sheathing Material	ABS

Part List

RFID reader	1
-------------	---

