



Chipsmall Limited consists of a professional team with an average of over 10 year of expertise in the distribution of electronic components. Based in Hongkong, we have already established firm and mutual-benefit business relationships with customers from,Europe,America and south Asia,supplying obsolete and hard-to-find components to meet their specific needs.

With the principle of "Quality Parts,Customers Priority,Honest Operation,and Considerate Service",our business mainly focus on the distribution of electronic components. Line cards we deal with include Microchip,ALPS,ROHM,Xilinx,Pulse,ON,Everlight and Freescale. Main products comprise IC,Modules,Potentiometer,IC Socket,Relay,Connector.Our parts cover such applications as commercial,industrial, and automotives areas.

We are looking forward to setting up business relationship with you and hope to provide you with the best service and solution. Let us make a better world for our industry!



Contact us

Tel: +86-755-8981 8866 Fax: +86-755-8427 6832

Email & Skype: info@chipsmall.com Web: www.chipsmall.com

Address: A1208, Overseas Decoration Building, #122 Zhenhua RD., Futian, Shenzhen, China



1140-MN-B

CHASSIS MOUNT – SHIELDED
1:5 MICROPHONE STEP UP TRANSFORMER

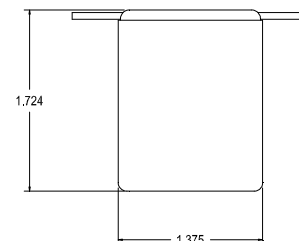
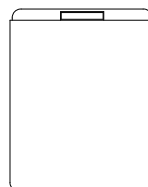
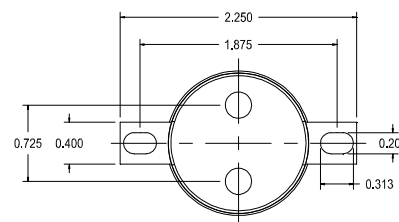
This transformer offers a high step up ratio and operates in the 20 Hz to 20 KHz range.

The mu metal can provides excellent shielding from a broad range of external sources. The nickel core provides high permeability combined with low losses for a very wide band width

Typical applications for input stage on vacuum tube or FET style amplifiers.

ELECTRICAL SPECIFICATIONS

Characteristic	Conditions	Typical
Input Impedance		150 Ω
Output Impedance		3800 Ω
Primary Input Impedance	@ 1kHz -20dbu Test Circuit 3	1.7KΩ
Secondary Output Impedance	@ 1kHz -20dbu Test Circuit 4	4.6KΩ
Maximum input Level	@ 20Hz RL = 600Ω	+7.0dbu
DCR		
Primary	@20°C	17.25 Ω
Secondary	@20°C	450 Ω
Frequency Response	@ 20 Hz, -20 dbu, Test Circuit 3	-0.04db
	@ 20 kHz, -20 dbu, Test Circuit 3	0.01db
Turns ratio		1:5
Common Mode Rejection Level	@ 60 Hz Test Circuit 2	90db
	3kHz Test Circuit 2	75db
THD	@ 1kHz -20 dbu Test Circuit 1	0.015%
	@ 20Hz -20 dbu Test Circuit 1	0.001%
Phase Shift	@ 20 Hz Test Circuit 1	0.6°
	@ 20 kHz Test Circuit 1	6.0°
Capacitance	Primary to Shield and Case	780pf
	Secondary to Shield and Case	450pf
Dielectric Strength		500 Vrms

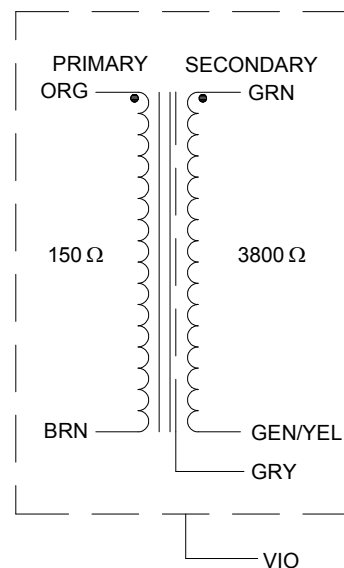




1140-MN-B

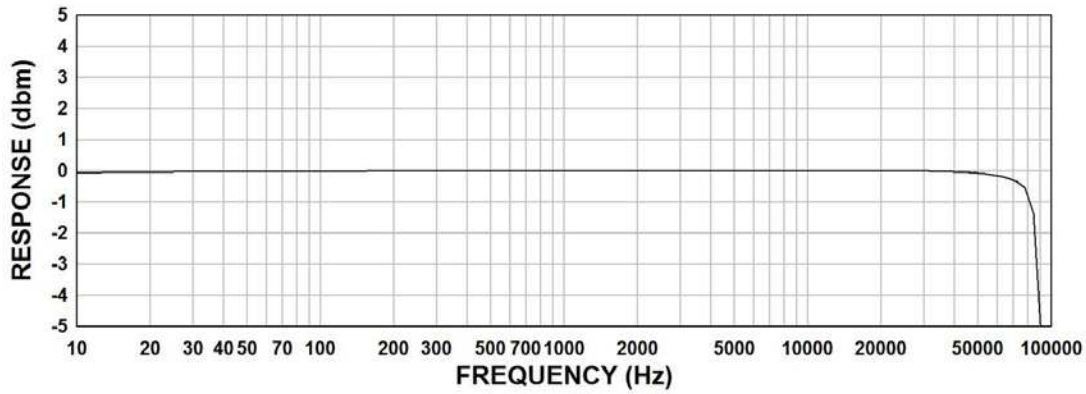
ORG - BRN: 150 Ω
 GRN - GRN/YEL: 3800 Ω
 GRY: SHIELD VIO: CAN
 MADE IN CANADA DATE

SCHEMATIC DIAGRAM



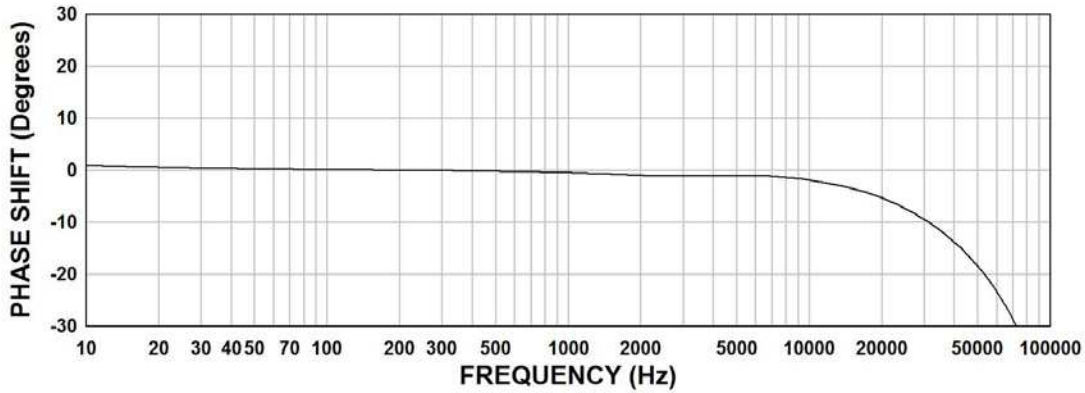
1140-MN-B Frequency Response

Input Level -20dbu
Rs= 150Ω, RL= 3800Ω



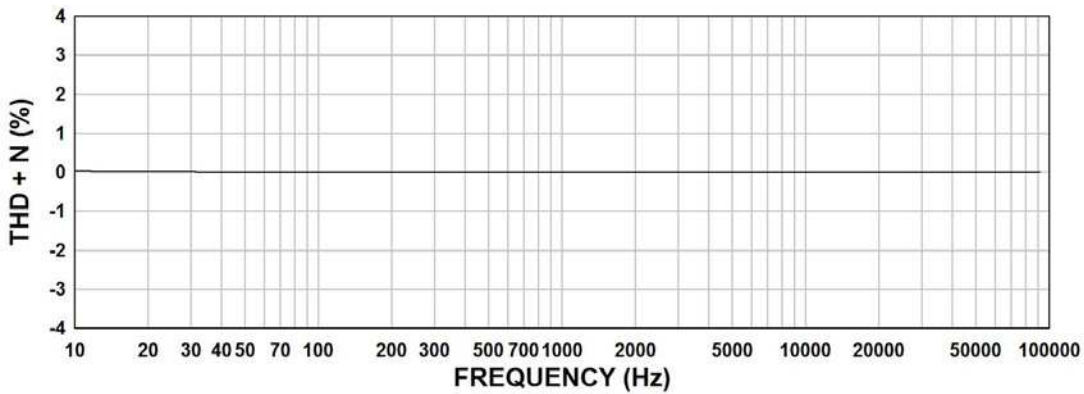
1140-MN-B Phase Shift

Input Level -20dbu
Rs= 150Ω, RL= 3800Ω

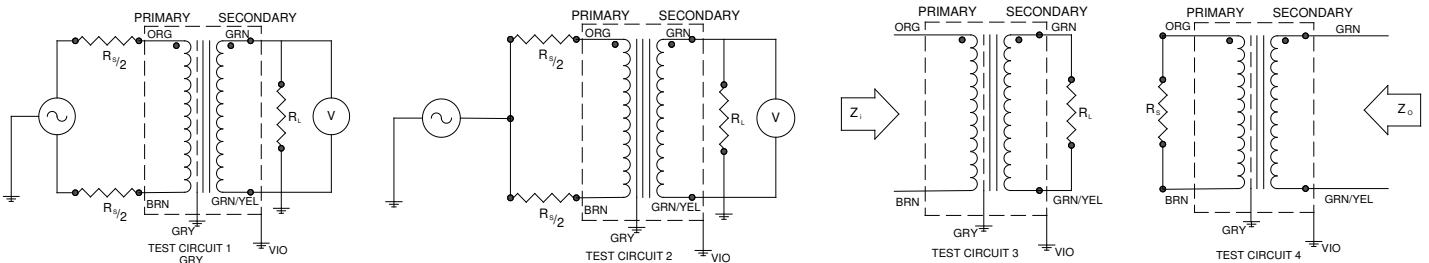


1140-MN-B THD+N

Input Level -20dbu
Rs= 150Ω, RL= 3800Ω



TYPICAL TEST CIRCUIT



Measurement instruments: Hp4192a Impedance Analyzer; Hp3456a DVM; Keithley 2002 DVM; D scope series iii audio analyzer

This drawing and the information in it is the property of Hammond Manufacturing. It may not be reproduced, transmitted or used in any manner whatsoever without the written permission of Hammond Manufacturing. Data subject to change without notice.