



Chipsmall Limited consists of a professional team with an average of over 10 year of expertise in the distribution of electronic components. Based in Hongkong, we have already established firm and mutual-benefit business relationships with customers from,Europe,America and south Asia,supplying obsolete and hard-to-find components to meet their specific needs.

With the principle of “Quality Parts,Customers Priority,Honest Operation,and Considerate Service”,our business mainly focus on the distribution of electronic components. Line cards we deal with include Microchip,ALPS,ROHM,Xilinx,Pulse,ON,Everlight and Freescale. Main products comprise IC,Modules,Potentiometer,IC Socket,Relay,Connector.Our parts cover such applications as commercial,industrial, and automotives areas.

We are looking forward to setting up business relationship with you and hope to provide you with the best service and solution. Let us make a better world for our industry!



## Contact us

Tel: +86-755-8981 8866 Fax: +86-755-8427 6832

Email & Skype: info@chipsmall.com Web: www.chipsmall.com

Address: A1208, Overseas Decoration Building, #122 Zhenhua RD., Futian, Shenzhen, China



# BoosterPack:ProtoPadSMD

From The 43oh Library

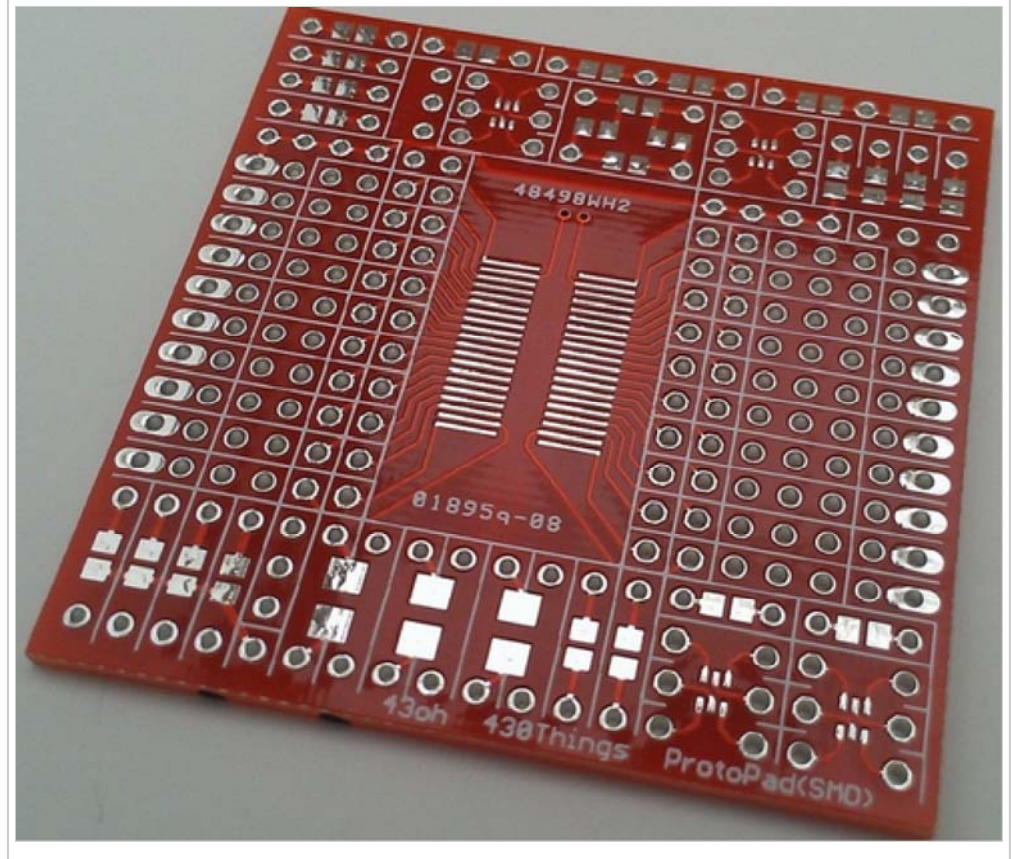
The ProtopadSMD is a prototyping BoosterPack for the MSP430 Launchpad with SMD footprints.

## Contents

- 1 Features
- 2 Downloads
- 3 Connecting the ProtopadSMD
- 4 Images

## Features

- Fits the MSP430 Launchpad.
- 40-pin SOIC



<b>ID</b>	The ProtopadSMD
<b>Forum</b>	43oh Forum Thread ( <a href="http://forum.43oh.com/topic/1377-booster-pack-breadboard/">http://forum.43oh.com/topic/1377-booster-pack-breadboard/</a> )
<b>Versions</b>	v1.0

(0.1" to 0.6" width) or 40-pin 0.65 pitch TSSOP (0.1" to 0.4" width,) can fit few smaller chips.

- Four 6-pin SOT-363 or SOT-457, can use for SOT-23, SOT-353, SOT-753, and similar.
- 9 single 0805 components.
- 6 single 3528 components.
- 4 0805 dividers/debouncers (connected between Vcc and GND.)
- 2 two 0805 components in series.
- 4 two 0805 components in series with one end common, for LEDs for example.
- 1 0805 bridge.

- Several connected solder pads.
- Most of 0805s are 2 in parallel, one on top and one on the bottom.
- Some of the supported TSSOP packages:
  - PW (R-PDSO-G\*\*), DA (R-PDSO-G\*\*), DAP (R-PDSO-G\*\*), PWP (R-PDSO-G\*\*), G\*\* is G40 or less
- Some of the TSSOPs that are NOT supported:
  - DBT (R-PDSO-G\*\*), DL (R-PDSO-G\*\*), basically none of 0.5 or 0.635 pitch. Some smaller packages should fit, 8-pin for