



Chipsmall Limited consists of a professional team with an average of over 10 year of expertise in the distribution of electronic components. Based in Hongkong, we have already established firm and mutual-benefit business relationships with customers from,Europe,America and south Asia,supplying obsolete and hard-to-find components to meet their specific needs.

With the principle of “Quality Parts,Customers Priority,Honest Operation,and Considerate Service”,our business mainly focus on the distribution of electronic components. Line cards we deal with include Microchip,ALPS,ROHM,Xilinx,Pulse,ON,Everlight and Freescale. Main products comprise IC,Modules,Potentiometer,IC Socket,Relay,Connector.Our parts cover such applications as commercial,industrial, and automotives areas.

We are looking forward to setting up business relationship with you and hope to provide you with the best service and solution. Let us make a better world for our industry!



## Contact us

Tel: +86-755-8981 8866 Fax: +86-755-8427 6832

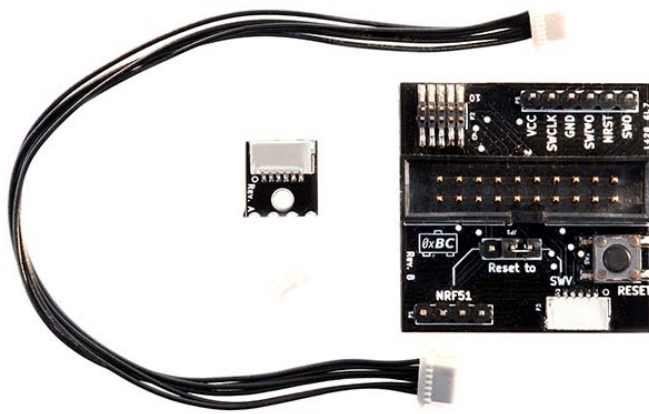
Email & Skype: info@chipsmall.com Web: www.chipsmall.com

Address: A1208, Overseas Decoration Building, #122 Zhenhua RD., Futian, Shenzhen, China



# Crazyflie 2.0 debug adapter kit

SKU 114990118



## Description

One of our goals is to make development with the Crazyflie 2.0 as easy as possible. But due to the platform's small size there are limitations on what connectors we can have. Therefore we designed a debug-adapter kit that makes connecting a debugger to either of the MCUs a lot easier, by converting the connector pinouts to standard JTAG and SWD pinouts.

This product is intended to be used together with the Crazyflie 2.0.

## Features

- Includes everything needed to more easily debug the MCUs (STM32F4 and nRF51)
- Multiple debug pinouts supported (including 20-pin JTAG and 10-pin Cortex debug)

## Specification

- Supported debugger pinouts:
- Custom pinout that matches ST Discovery board debug interfaces
- Standard Cortex SWV debug 2x6 1.27mm (50mil) SWV interface
- Standard 2x10 2.54mm (100mil) JTAG interface
- Has reset button with jumper for reset support on either STM32F4 and nRF51

## Part List

- 1 x Crazyflie 2.0 debug adapter
- 1 x nRF51 debug connector
- 1 x Nylon screw and nut for nRF51 debug connector
- 1 x 6-pin debug cable for connecting to the Crazyflie 2.0

## Support

If you have any further question for technical support, please contact [support\(at\)bitcraze.se](mailto:support@bitcraze.se).