



Chipsmall Limited consists of a professional team with an average of over 10 year of expertise in the distribution of electronic components. Based in Hongkong, we have already established firm and mutual-benefit business relationships with customers from,Europe,America and south Asia,supplying obsolete and hard-to-find components to meet their specific needs.

With the principle of “Quality Parts,Customers Priority,Honest Operation,and Considerate Service”,our business mainly focus on the distribution of electronic components. Line cards we deal with include Microchip,ALPS,ROHM,Xilinx,Pulse,ON,Everlight and Freescale. Main products comprise IC,Modules,Potentiometer,IC Socket,Relay,Connector.Our parts cover such applications as commercial,industrial, and automotives areas.

We are looking forward to setting up business relationship with you and hope to provide you with the best service and solution. Let us make a better world for our industry!



Contact us

Tel: +86-755-8981 8866 Fax: +86-755-8427 6832

Email & Skype: info@chipsmall.com Web: www.chipsmall.com

Address: A1208, Overseas Decoration Building, #122 Zhenhua RD., Futian, Shenzhen, China





Raspberry Pi HDMI LCD (5 inch)

SKU 114990834

Raspberry Pi HDMI LCD (5 inch) is a low-cost 5 inch Resistive Touch Screen LCD, HDMI interface, designed for Raspberry Pi for Raspberry Pi.



Description

What is Raspberry Pi 5inch HDMI LCD

Raspberry Pi HDMI LCD (5 inch) is a low-cost 5 inch Resistive Touch Screen LCD, HDMI interface, designed for Raspberry Pi for Raspberry Pi.

Key Features

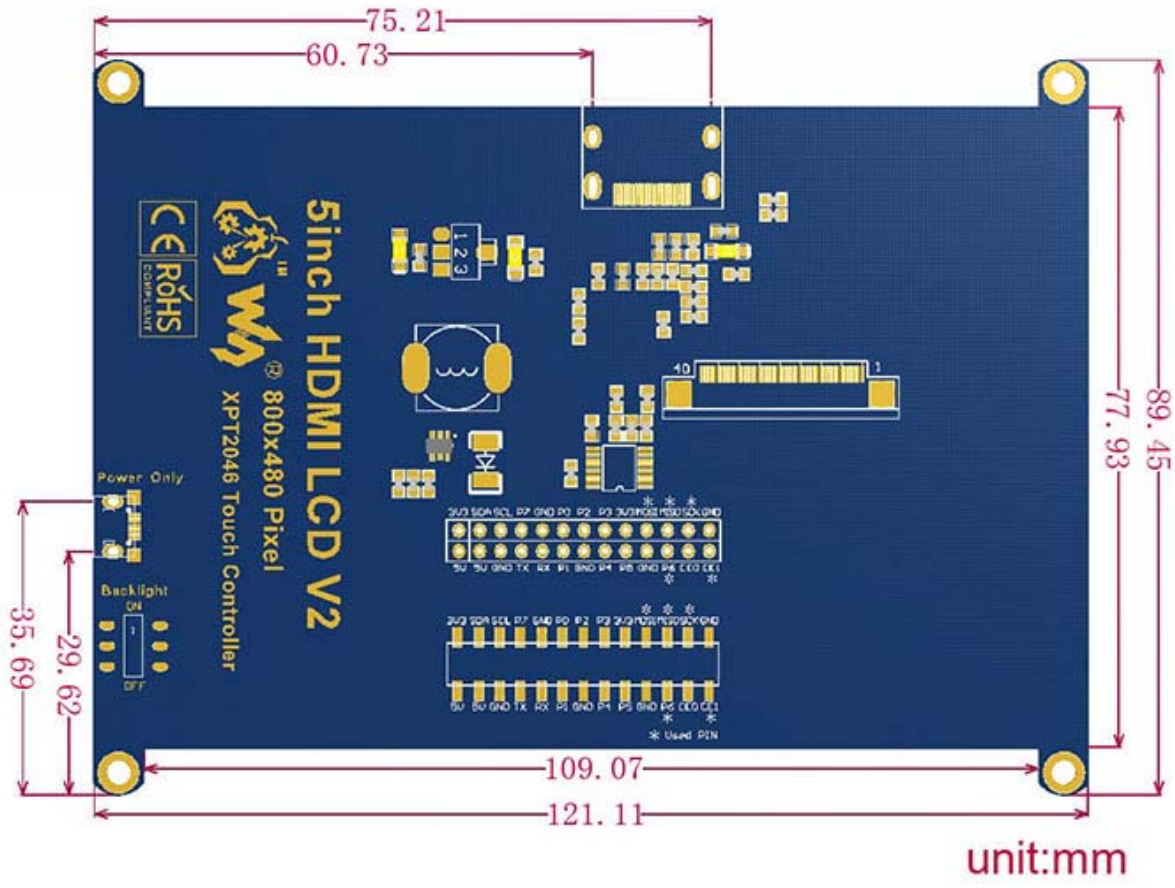
- 800×480 high resolution, touch control
- Compatible and Direct-connect with any revision of Raspberry Pi (except the Pi 1 model B or Pi Zero, which requires an HDMI cable)

- Drivers provided (works with your own Raspbian/Ubuntu directly)
- HDMI interface for displaying, no I/Os required (however, the touch panel still needs I/Os)
- Back light control to lower power consumption
- High quality immersion gold surface plating

Interface

PIN NO.	SYMBOL	DESCRIPTION
1, 17	3.3V	Power positive (3.3V power input)
2, 4	5V	Power positive (5V power input)
3, 5, 7, 8, 10, 11, 12, 13, 15, 16, 18, 24	NC	NC
6, 9, 14, 20, 25	GND	Ground
19	TP_SI	SPI data input of Touch Panel
21	TP_SO	SPI data output of Touch Panel
22	TP_IRQ	Touch Panel interrupt, low level while the Touch Panel detects touching
23	TP_SCK	SPI clock of Touch Panel
26	TP_CS	Touch Panel chip selection, low active

Dimensions



Part List

- 5inch HDMI LCD x 1
- HDMI connector x 1
- Touch pen x 1
- RPi screws pack (4pcs) x 1
- DVD x 1