



Chipsmall Limited consists of a professional team with an average of over 10 year of expertise in the distribution of electronic components. Based in Hongkong, we have already established firm and mutual-benefit business relationships with customers from,Europe,America and south Asia,supplying obsolete and hard-to-find components to meet their specific needs.

With the principle of “Quality Parts,Customers Priority,Honest Operation,and Considerate Service”,our business mainly focus on the distribution of electronic components. Line cards we deal with include Microchip,ALPS,ROHM,Xilinx,Pulse,ON,Everlight and Freescale. Main products comprise IC,Modules,Potentiometer,IC Socket,Relay,Connector.Our parts cover such applications as commercial,industrial, and automotives areas.

We are looking forward to setting up business relationship with you and hope to provide you with the best service and solution. Let us make a better world for our industry!



Contact us

Tel: +86-755-8981 8866 Fax: +86-755-8427 6832

Email & Skype: info@chipsmall.com Web: www.chipsmall.com

Address: A1208, Overseas Decoration Building, #122 Zhenhua RD., Futian, Shenzhen, China





Water Pressure Sensor G1/4 1.2Mpa

SKU 114991178



Description

This is a pressure measuring sensor. You can use it in clean, non-corrosive gas and liquid.

Features

Compact, Easy to Install

High Sealing Performance

High Quality Hall Effect Sensor

RoHS Compliant

Specifications

Working Voltage: DC 5±0.5V

Working Current: ≤10mA (DC 5V)

Working Voltage: DC 0.5~4.5V

Working Pressure Rate Range: 0~1.2Mpa

Max. Pressure: 2.4Mpa

Destructive pressure: 3.0Mpa

Working Temperature: -20~+ 105°C

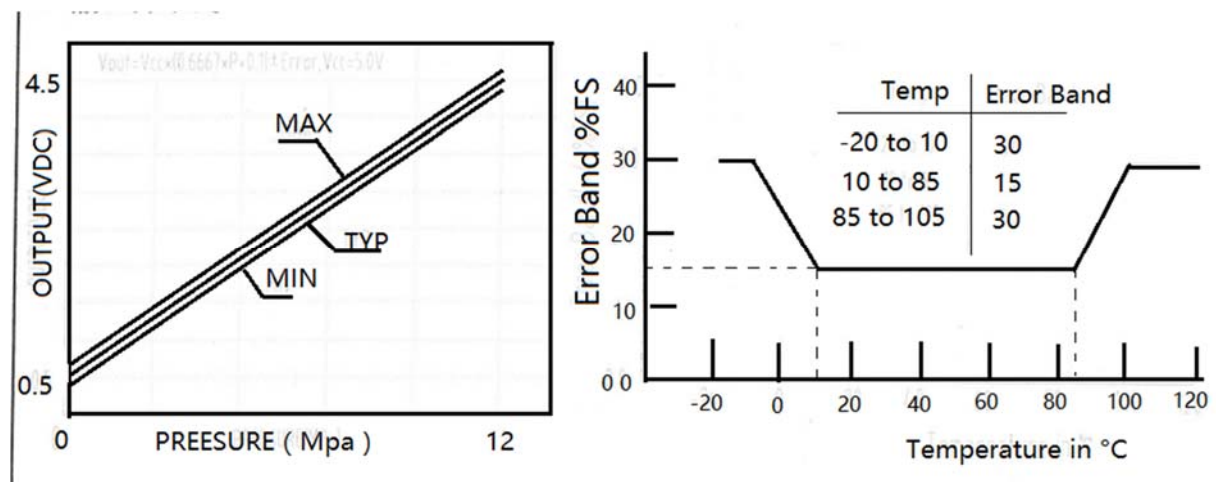
Storage Temperature: -20~+ 105°C

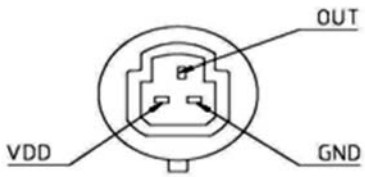
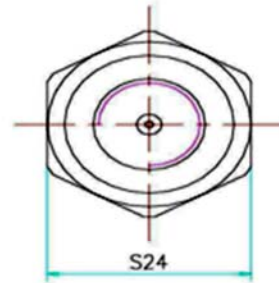
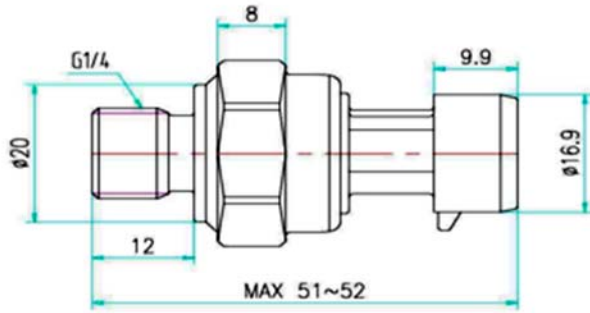
Measurement Accuracy: ±1.5%FS

Response Time: ≤2.0ms

IP65

Cycle Life: 1,000,000 pcs





引线定义:

VCC: RED (电源+)

OUT: BLUE (信号输出)

GND: BLACK (电源-)

Partlist

1 x Water Pressure Sensor

Technical Details

Weight G.W 52g

Battery Exclude