



Chipsmall Limited consists of a professional team with an average of over 10 year of expertise in the distribution of electronic components. Based in Hongkong, we have already established firm and mutual-benefit business relationships with customers from,Europe,America and south Asia,supplying obsolete and hard-to-find components to meet their specific needs.

With the principle of “Quality Parts,Customers Priority,Honest Operation,and Considerate Service”,our business mainly focus on the distribution of electronic components. Line cards we deal with include Microchip,ALPS,ROHM,Xilinx,Pulse,ON,Everlight and Freescale. Main products comprise IC,Modules,Potentiometer,IC Socket,Relay,Connector.Our parts cover such applications as commercial,industrial, and automotives areas.

We are looking forward to setting up business relationship with you and hope to provide you with the best service and solution. Let us make a better world for our industry!



## Contact us

Tel: +86-755-8981 8866 Fax: +86-755-8427 6832

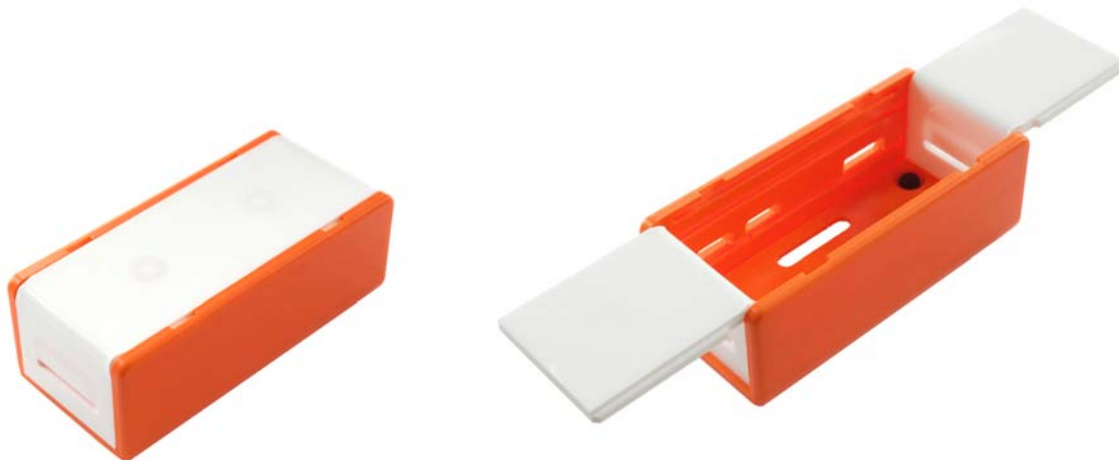
Email & Skype: info@chipsmall.com Web: www.chipsmall.com

Address: A1208, Overseas Decoration Building, #122 Zhenhua RD., Futian, Shenzhen, China



## Flick Zero Case

SKU 114991399



### Description

Spice up your Flick Zero and Raspberry Pi Zero with a stylish white and orange Flick Zero case! This vibrant and durable case is made up of three parts; an orange base and a white two piece lid.

This lid can be used in two different setups in either an open or closed position, allowing you to hide your Pi Zero and Flick Zero, or keep it visible to the world. Flick can work through materials such as acrylic, wood, and glass so our plastic case (even when the lid is in the closed position) will not negatively impact any of the fun you can have with Flick!

## Suction cups

The Flick Zero case features two knockout holes on the lid panels which can be pushed out with a pen. Two suction cups come as standard and can be installed in the knockout holes. The suction cups can be mounted on many different surfaces such as glass, plastic, or wood and still be removed easily.

Perhaps you want to set up your Flick Zero & Raspberry Pi Zero to only allow entry through a door if you swipe the right pattern – with this case, you could mount it right next to the door without the need to drill any holes or hammer any nails.

## Flick Software

Visit our Flick GitHub page and acquire all the software you need to get up and running with your brand new Flick Zero and case. <https://github.com/PISupply/Flick>

## Technical Details

|            |                    |
|------------|--------------------|
| Dimensions | 72mm x 34mm x 27mm |
| Weight     | G.W 65g            |
| Battery    | Exclude            |

**Part List**

|              |   |
|--------------|---|
| suction cups | 2 |
| orange base  | 1 |
| lid pieces   | 2 |