



Chipsmall Limited consists of a professional team with an average of over 10 year of expertise in the distribution of electronic components. Based in Hongkong, we have already established firm and mutual-benefit business relationships with customers from,Europe,America and south Asia,supplying obsolete and hard-to-find components to meet their specific needs.

With the principle of “Quality Parts,Customers Priority,Honest Operation,and Considerate Service”,our business mainly focus on the distribution of electronic components. Line cards we deal with include Microchip,ALPS,ROHM,Xilinx,Pulse,ON,Everlight and Freescale. Main products comprise IC,Modules,Potentiometer,IC Socket,Relay,Connector.Our parts cover such applications as commercial,industrial, and automotives areas.

We are looking forward to setting up business relationship with you and hope to provide you with the best service and solution. Let us make a better world for our industry!



## Contact us

Tel: +86-755-8981 8866 Fax: +86-755-8427 6832

Email & Skype: [info@chipsmall.com](mailto:info@chipsmall.com) Web: [www.chipsmall.com](http://www.chipsmall.com)

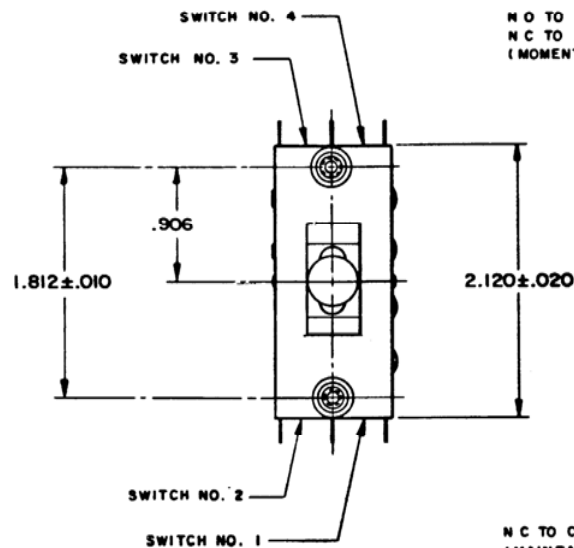
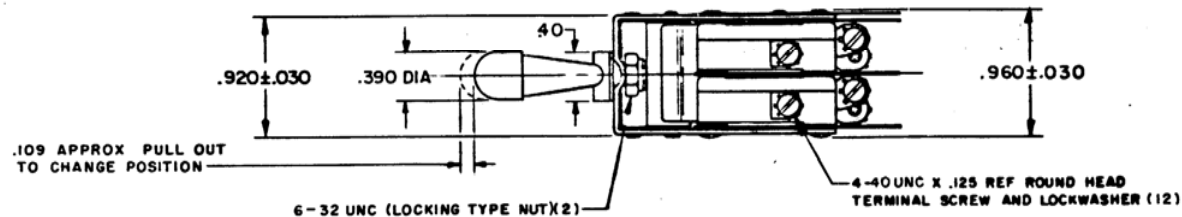
Address: A1208, Overseas Decoration Building, #122 Zhenhua RD., Futian, Shenzhen, China



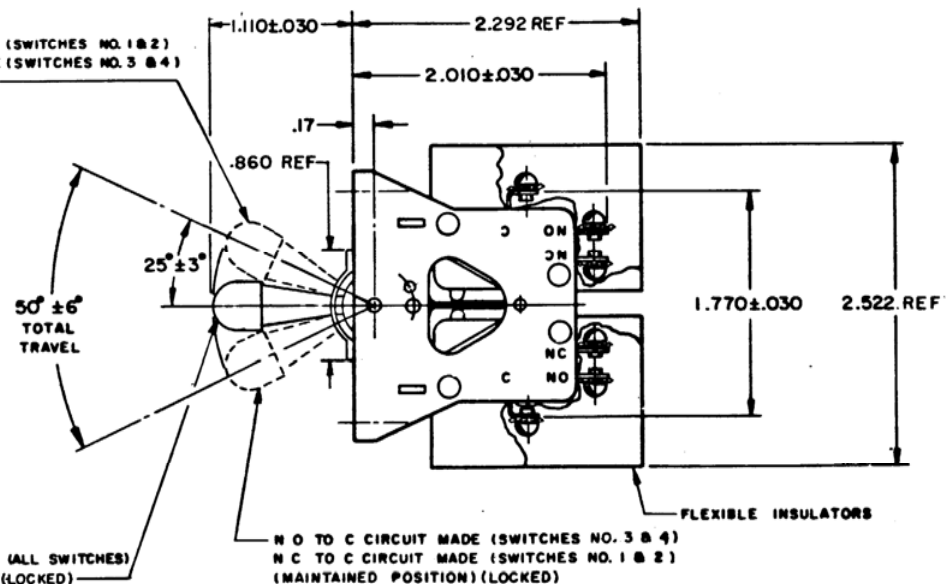
MICRO SWITCH

A DIVISION OF MINNEAPOLIS-APPROVED REGULATING COMPANY

FED. MFR. CODE 91929

ASSEMBLY-  
TOGGLE SWITCHCATALOG LISTING  
115 AT 2

N O TO C CIRCUIT MADE (SWITCHES NO. 1 & 2)  
N C TO C CIRCUIT MADE (SWITCHES NO. 3 & 4)  
(MOMENTARY POSITION)



N C TO C CIRCUITS MADE (ALL SWITCHES)  
(MAINTAINED POSITION) (LOCKED)

THIS DRAWING COVERS A PROPRIETARY ITEM AND IS THE PROPERTY OF MICRO SWITCH, A DIVISION OF MINNEAPOLIS-HONEYWELL REGULATOR CO. THIS DRAWING IS NOT TO BE COPIED OR USED WITHOUT THE APPROVAL OF MICRO SWITCH.

CHARACTERISTICS	ELECTRICAL DATA	SCALE FULL
	CONTACT ARRANGEMENT S P D T (4)	DO NOT SCALE PRINT
	15 A-1/3 HP-125 OR 250 VAC 1/2 A-125 VDC; 1/4 A-250 VDC	UNLESS OTHERWISE SPECIFIED DIMENSIONS ARE IN INCHES TOLERANCES ARE: ONE PLACE (.05) 2.000 TWO PLACE (.005) 2.000 THREE PLACE (.000) 2.000 ANGLES 2
		WEIGHT

## NOTE:

- 1- UNIT INCLUDES CAT. LIST. V3-201 (4) BASIC SWITCH  
2- SWITCHES DO NOT NECESSARILY OPERATE SIMULTANEOUSLY