



Chipsmall Limited consists of a professional team with an average of over 10 year of expertise in the distribution of electronic components. Based in Hongkong, we have already established firm and mutual-benefit business relationships with customers from,Europe,America and south Asia,supplying obsolete and hard-to-find components to meet their specific needs.

With the principle of “Quality Parts,Customers Priority,Honest Operation,and Considerate Service”,our business mainly focus on the distribution of electronic components. Line cards we deal with include Microchip,ALPS,ROHM,Xilinx,Pulse,ON,Everlight and Freescale. Main products comprise IC,Modules,Potentiometer,IC Socket,Relay,Connector.Our parts cover such applications as commercial,industrial, and automotives areas.

We are looking forward to setting up business relationship with you and hope to provide you with the best service and solution. Let us make a better world for our industry!



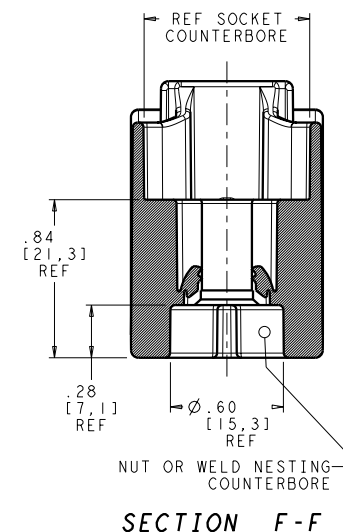
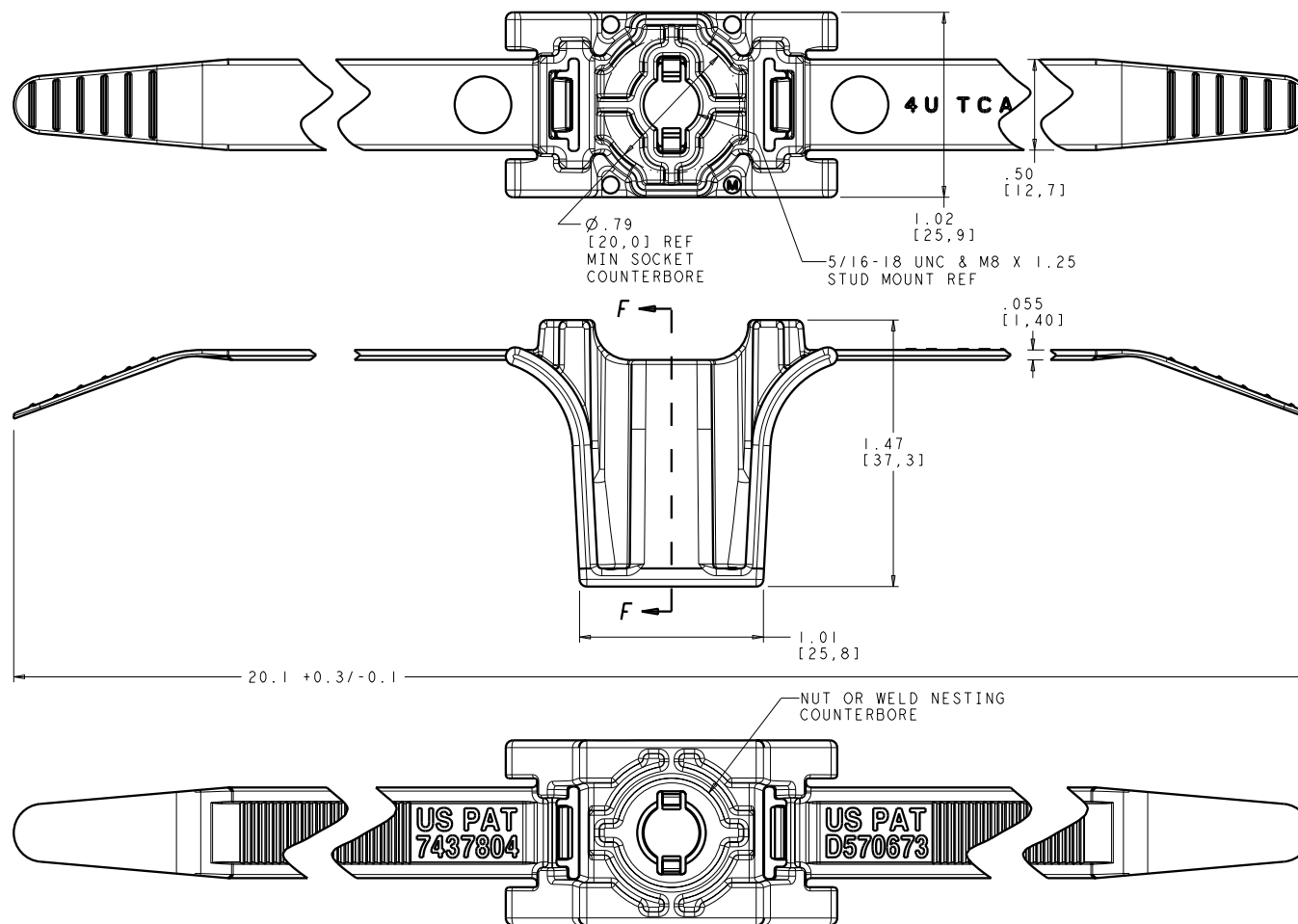
Contact us

Tel: +86-755-8981 8866 Fax: +86-755-8427 6832

Email & Skype: info@chipsmall.com Web: www.chipsmall.com

Address: A1208, Overseas Decoration Building, #122 Zhenhua RD., Futian, Shenzhen, China





FEATURES:

- WIDE STRAP TO MINIMIZE PINCHING OF SOFT HOSES & CONVOLUTED TUBING
- THIN/FLEXIBLE STRAP TIGHTENS EASILY ON SMALLER BUNDLE DIAMETERS
- CLAMPING RAILS TO INCREASE CIRCUMFERENTIAL GRIP ON ROUND BUNDLES
- NUT & WELD NESTING COUNTERBORE PROVIDES FLUSH MOUNTING AT THE BASE
- SOCKET COUNTERBORE FOR FASTENING A NUT TOPSIDE FOR ADDED RETENTION

- * RATINGS ARE BASED ON PARTS TESTED DRY AS MOLDED (<0.5% MOISTURE)
- ** RATINGS ARE BASED ON 5/16" (8MM) STUD AT .306" DIAMETER

See Product Specification: CT2128003PDS for additional information.

STUD MOUNT SIZE	STUD INSERTION	STUD PULLOUT	MAX BUNDLE DIA	MIN BUNDLE DIA	LOOP TENSILE
5/16-18 UNC & M8x1.25	40 LB MAX* **	100 LB MIN* **	2.3" each side	.375" each side	100 LBS MIN*

INVENTORS	HellermannTyton®			REVISION	level 07	DIMENSIONS	TOLERANCES		PART	number SDCTR312	phase PRODUCTION	DRAWING	FORMAT AH version J	CAD PRO-E	scale 1/1
	ALL PROPRIETARY RIGHTS IN THE SUBJECT MATTER SHOWN ON THIS DRAWING ARE EXCLUSIVE PROPERTY OF HELLERMANNTYTON				by GGG		.XXXX= ±0.005 / [1,27]	.XXX= ±0.010 / [1,25]		name	computer file number		previous number		
	name	date	city, state		date 4/6/09		.XX= ±0.02 / [1,5]	.X= ±0.1 / [2,5]		material	drawn G GEIGER		checked K Christian	approved	
	G GEIGER	7/22/04	JACKSON, WI		ECN # 011282		≤ ±0.5	PA66HIRHSUV BLACK & PA66HIRHS UV RESISTANT BLACK both per ASTM D4066 PA0161		7/22/04	4/10/09				
	M PUNCOCHAR	7/13/05	HILLSBORO, OR		part level M		units inches			type CUSTOMER	sheet 1 of 1		number CT2128003CST		