



Chipsmall Limited consists of a professional team with an average of over 10 year of expertise in the distribution of electronic components. Based in Hongkong, we have already established firm and mutual-benefit business relationships with customers from,Europe,America and south Asia,supplying obsolete and hard-to-find components to meet their specific needs.

With the principle of “Quality Parts,Customers Priority,Honest Operation,and Considerate Service”,our business mainly focus on the distribution of electronic components. Line cards we deal with include Microchip,ALPS,ROHM,Xilinx,Pulse,ON,Everlight and Freescale. Main products comprise IC,Modules,Potentiometer,IC Socket,Relay,Connector.Our parts cover such applications as commercial,industrial, and automotives areas.

We are looking forward to setting up business relationship with you and hope to provide you with the best service and solution. Let us make a better world for our industry!



Contact us

Tel: +86-755-8981 8866 Fax: +86-755-8427 6832

Email & Skype: info@chipsmall.com Web: www.chipsmall.com

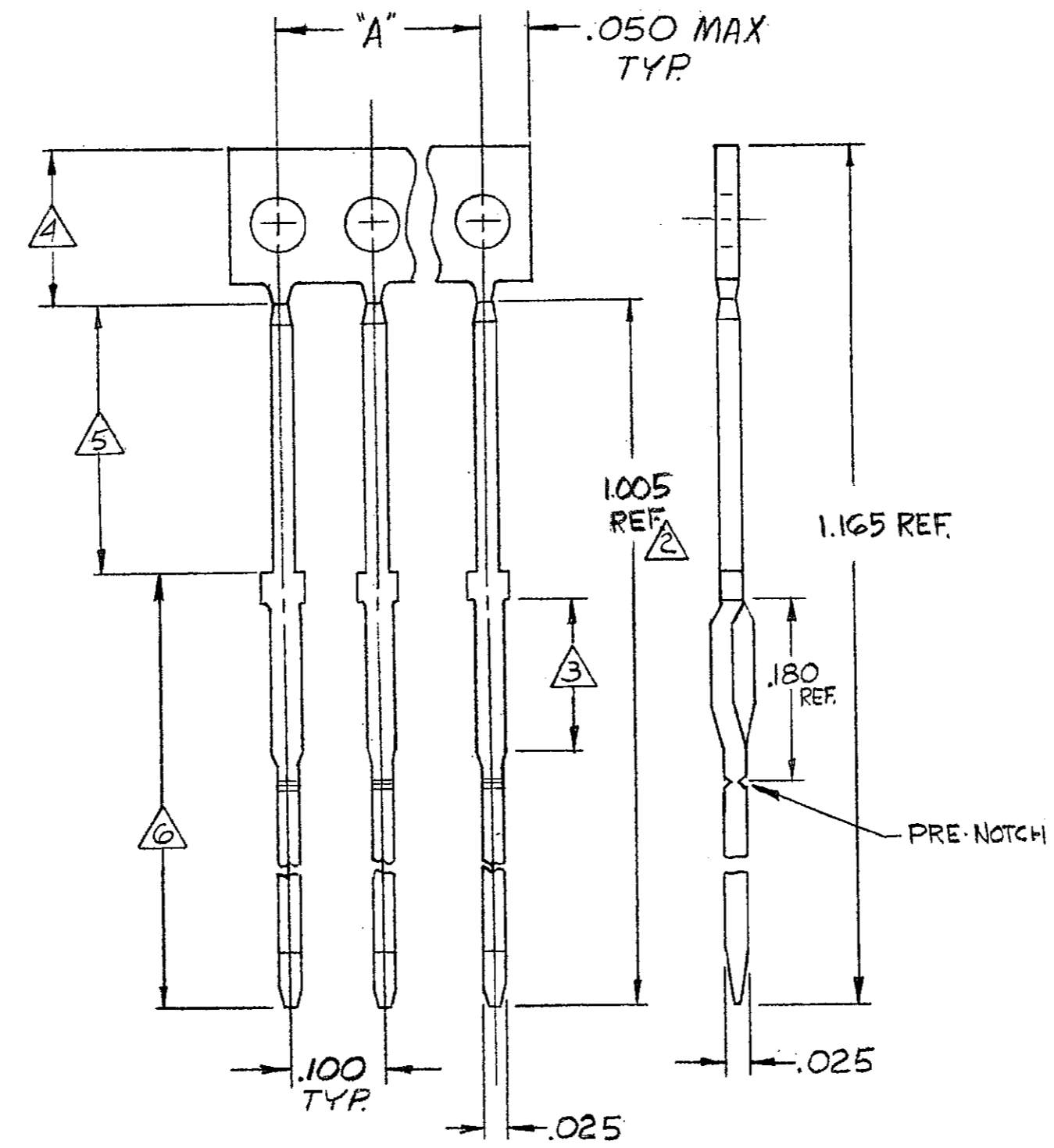
Address: A1208, Overseas Decoration Building, #122 Zhenhua RD., Futian, Shenzhen, China



UNPUBLISHED COPY NOT TO BE REPRODUCED NOR PUBLISHED
 © COPY WITHOUT WRITTEN PERMISSION OF AMP INCORPORATED, HARRISBURG, PA.
 ALL INTERESTS RESERVED. AMP INCORPORATED PRODUCTS COVERED BY U. S. AND FOREIGN PATENTS AND/OR PATENTS PENDING.

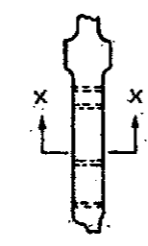
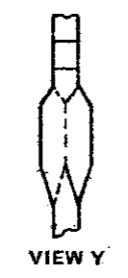
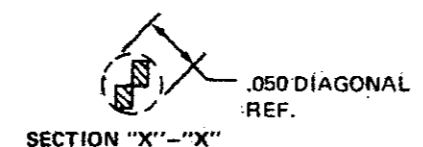
REVISIONS					
P	ZONE	LTR	DESCRIPTION	DATE	APPROVED
		K	REV PER OG3C-0006-01	05FEB01	MM
		K1	REVISED PER ECO-09-026346	NOV09	AEG

PART NO	POS	"A"	
118385-1	58	5.700	OBS
118385-2	7	.600	OBS
118385-3	22	2.100	
118385-4	40	3.900	OBS
-5	13	1.200	
-6	26	2.500	OBS
-7	20	1.900	OBS
118385-8	10	.900	OBSOLETE



1. ALL DIMENSIONS ARE REFERENCE ONLY.
 NICKEL PL (QQ-N-290) .000050 MIN THK.

- ACTION PIN AREA
- PLATING IS NOT REQUIRED ON CARRIER STRIP
- GOLD PLATE PER (MIL-G-45204) .000030 MIN. THK OVER NICKEL PLATE
- GOLD FLASH PER (MIL-G-45204) .000001 MIN. THK OVER NICKEL PLATE
- OBSOLETE PARTS: OBSOLETE CIS STREAMLINING PER D.RENAUD/D.SINISI



NOTE:
 REFER TO AMP SPEC.
 108-26003
 AS APPLICABLE,
 FOR SPECIFIC
 HOLE SIZE
 RECOMMENDATIONS.

3-117249-1
 REEL PART NO.

UNLESS OTHERWISE SPECIFIED DIMENSIONS ARE IN INCHES. TOLERANCES ON: DECIMALS ± ANGLES ±	CONTRACT NO	AMP INCORPORATED Harrisburg, Pa.	
	DR <i>J. Nagel</i> 2/15/77		
MATERIAL CA 725	CHK <i>B.P. Smith</i> 2/16/77	COMB, POST, FEED THRU .100 ACTION PIN W/ PRE-NOTCH	
FINISH 	APPD <i>B.P. Smith</i> 2/16/77	SIZE	CODE IDENT NO
	DSGN APPD	C	00779
	OTHER APPD	DRAWING NO 118385	
		SCALE	SHEET
		2	