



Chipsmall Limited consists of a professional team with an average of over 10 year of expertise in the distribution of electronic components. Based in Hongkong, we have already established firm and mutual-benefit business relationships with customers from,Europe,America and south Asia,supplying obsolete and hard-to-find components to meet their specific needs.

With the principle of “Quality Parts,Customers Priority,Honest Operation,and Considerate Service”,our business mainly focus on the distribution of electronic components. Line cards we deal with include Microchip,ALPS,ROHM,Xilinx,Pulse,ON,Everlight and Freescale. Main products comprise IC,Modules,Potentiometer,IC Socket,Relay,Connector.Our parts cover such applications as commercial,industrial, and automotives areas.

We are looking forward to setting up business relationship with you and hope to provide you with the best service and solution. Let us make a better world for our industry!



## Contact us

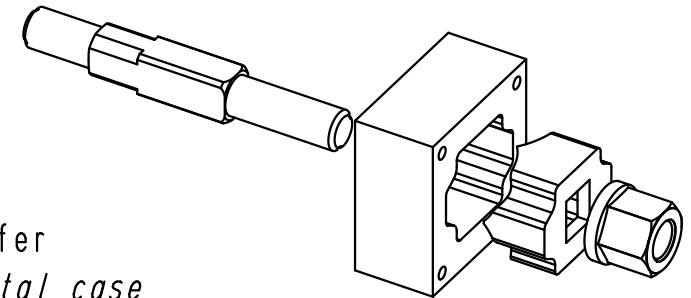
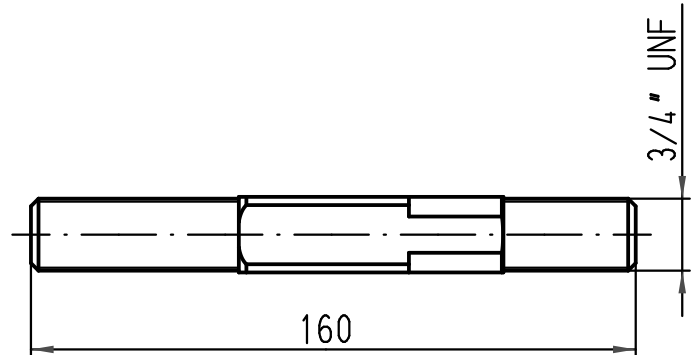
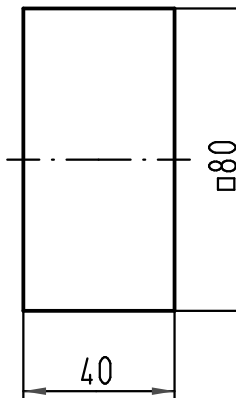
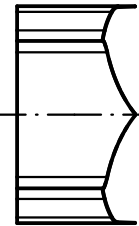
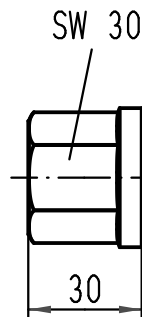
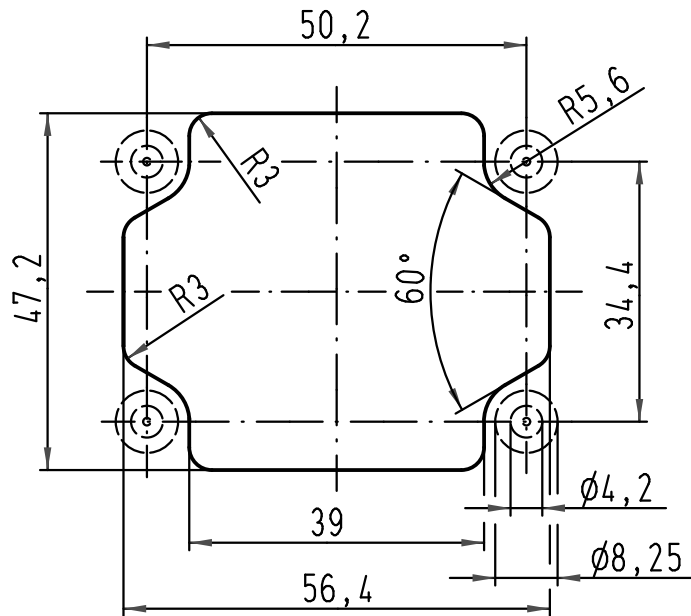
Tel: +86-755-8981 8866 Fax: +86-755-8427 6832

Email & Skype: [info@chipsmall.com](mailto:info@chipsmall.com) Web: [www.chipsmall.com](http://www.chipsmall.com)

Address: A1208, Overseas Decoration Building, #122 Zhenhua RD., Futian, Shenzhen, China



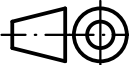

Blechausschnitt 1:1  
panel cut out



zum Erzeugen von Blechausschnitten  
Blechstärke Stahl:  $\leq 2,5$  mm  
Edelstahl:  $\leq 2,0$  mm  
für Hydraulikpumpe Stanzkraft:  $\geq 60$  kN  
Anschlussgewinde: 3/4" UNF

panel cut out tool  
panel thickness steel:  $\leq 2,5$  mm  
stainless steel:  $\leq 2,0$  mm  
for hydraulic pump punch force:  $\geq 60$  kN  
thread: 3/4" UNF

Lieferform: Einzelteile im Metallkoffer  
kind of delivery: single parts in metal case

			All Dimensions in mm Original Size DIN A 4			Techn. Character.			Nicht tolerierte Maße/Free size tolerances		
				Dat.	Name	Maßstab/Scale  1:2	Stanzwerkzeug panel punch Han-Yellock 30				
			Detail.	12.10.10	Ho						
			Insp.		SP						
			Stand.								
			HARTING Electric GmbH & Co. KG						TB 11 99 300 0001		
A			D-32339 Espelkamp								
Mod.	Dat.	Name							Sub.		
									Blatt/ page		