



Chipsmall Limited consists of a professional team with an average of over 10 year of expertise in the distribution of electronic components. Based in Hongkong, we have already established firm and mutual-benefit business relationships with customers from,Europe,America and south Asia,supplying obsolete and hard-to-find components to meet their specific needs.

With the principle of "Quality Parts,Customers Priority,Honest Operation,and Considerate Service",our business mainly focus on the distribution of electronic components. Line cards we deal with include Microchip,ALPS,ROHM,Xilinx,Pulse,ON,Everlight and Freescale. Main products comprise IC,Modules,Potentiometer,IC Socket,Relay,Connector.Our parts cover such applications as commercial,industrial, and automotives areas.

We are looking forward to setting up business relationship with you and hope to provide you with the best service and solution. Let us make a better world for our industry!



## Contact us

Tel: +86-755-8981 8866 Fax: +86-755-8427 6832

Email & Skype: info@chipsmall.com Web: www.chipsmall.com

Address: A1208, Overseas Decoration Building, #122 Zhenhua RD., Futian, Shenzhen, China



## Audio Sound Distribution Line Matching *119 Series*

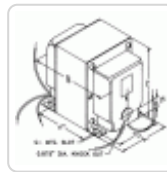
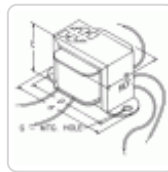


### Features

- Suitable for driving from solid state amplifiers where isolated windings are not required or can be used with our "Classic" 1600 tube output transformers to provide a 25V or 70V line output.
- 8 or 16 ohm input, 25V or 70V line output.
- Frequency response 50 Hz. to 10 Khz. at full ratings
- Leads 6" long minimum
- Can be reversed for operation at high power speaker locations.
- For speaker matching from older "Classic" 600 Ohm equipment - check out our **119DA** matching transformer.



### Gallery



Part No.	Max Output (Watts)	Line Output	Mounting Type	Mounting Centers	Mounting Hole Slot G	Wt. ( lbs.)	Drawing Figure	Overall Dimensions				
								A	B	C	D	E
<b>119Y30</b>	30	70 & 25v	Bracket	3.56	0.19	2.40	1.00	4.03	2.25	2.63	3.56	-
<b>119Y60</b>	60	70 & 25v	X Mtg.	2.00 x 2.19	0.20 x 0.38	3.30	2.00	2.50	3.25	3.06	2.00	2.19
<b>119Y100</b>	100	70v only	X Mtg.	2.50 x 2.19	0.20 x 0.38	4.70	2.00	3.13	3.50	3.81	2.50	2.19
<b>119Y250</b>	250	70v only	X Mtg.	2.50 x 2.94	0.20 x 0.38	6.70	2.00	3.13	4.25	3.81	2.50	2.94

*Data subject to change without notice*