



Chipsmall Limited consists of a professional team with an average of over 10 year of expertise in the distribution of electronic components. Based in Hongkong, we have already established firm and mutual-benefit business relationships with customers from,Europe,America and south Asia,supplying obsolete and hard-to-find components to meet their specific needs.

With the principle of “Quality Parts,Customers Priority,Honest Operation,and Considerate Service”,our business mainly focus on the distribution of electronic components. Line cards we deal with include Microchip,ALPS,ROHM,Xilinx,Pulse,ON,Everlight and Freescale. Main products comprise IC,Modules,Potentiometer,IC Socket,Relay,Connector.Our parts cover such applications as commercial,industrial, and automotives areas.

We are looking forward to setting up business relationship with you and hope to provide you with the best service and solution. Let us make a better world for our industry!



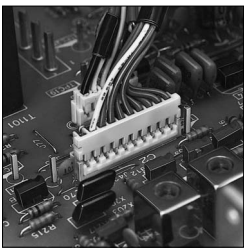
Contact us

Tel: +86-755-8981 8866 Fax: +86-755-8427 6832

Email & Skype: info@chipsmall.com Web: www.chipsmall.com

Address: A1208, Overseas Decoration Building, #122 Zhenhua RD., Futian, Shenzhen, China

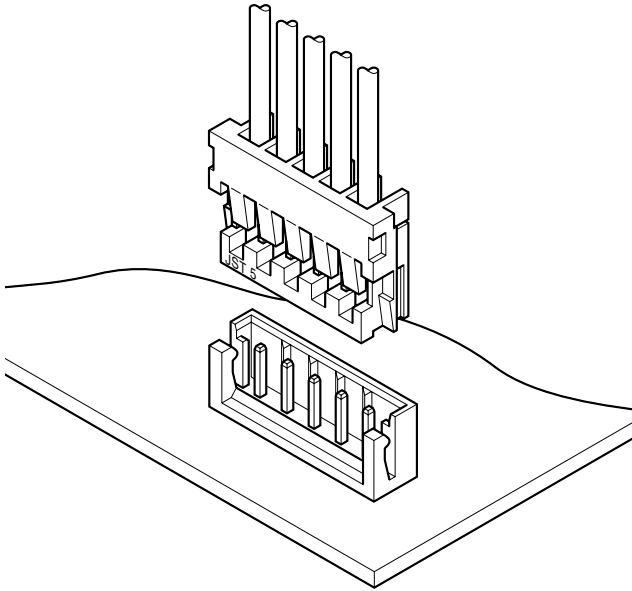




HR CONNECTOR



2.5mm pitch/Disconnectable Insulation displacement connectors



This 2.5mm pitch connector for printed circuit boards has a thin construction. The in-line method provides high-density capability to the end user.

- Twin U-slot insulation displacement section
- Thin design
- High reliability
- Strain relief
- Interchangeability

Specifications

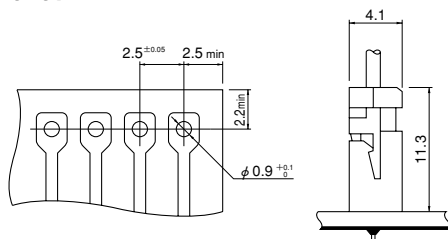
- Current rating: 2A AC, DC (AWG #24)
- Voltage rating: 250V AC, DC
- Temperature range: -25°C to +85°C
(including temperature rise in applying electrical current)
- Contact resistance: Initial value/10m Ω max.
After environmental testing/20m Ω max.
- Insulation resistance: 1,000M Ω min.
- Withstanding voltage: 1,000V AC/minute
- Applicable wire: UL1007(Contact JST for details regarding other UL styles.)
AWG #28, #26, #24
Conductor/7 strands, tin-coated
Insulation O.D./1.0 to 1.5mm
- Applicable PC board thickness: 0.8 to 1.6mm
- * Compliant with RoHS.
- * Refer to "General Instruction and Notice when using Terminals and Connectors" at the end of this catalog.
- * Contact JST for details.

Standards

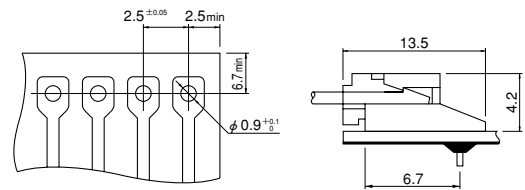
- Ⓜ Recognized E60389
- Ⓢ Certified LR20812
- Ⓡ R50082349

PC board layout (viewed from soldering side) and Assembly layout

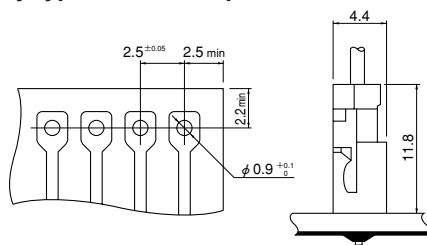
Top entry type



Side entry type



Top entry type on radial-tape

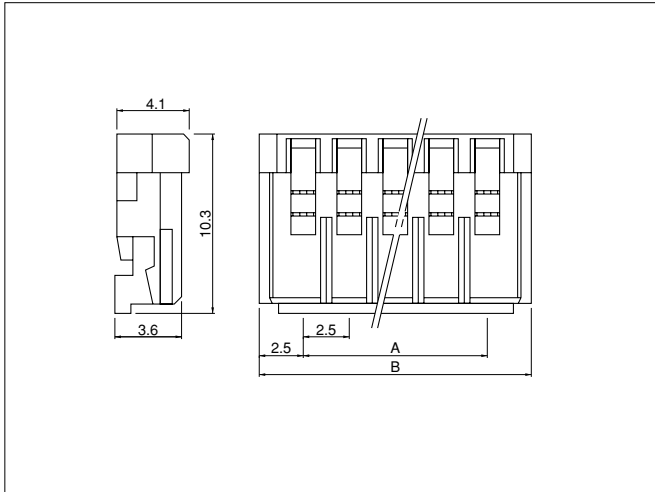


Note: 1. Tolerances are non-cumulative: ±0.05mm for all centers.

2. Hole dimensions differ according to the kind of PC board and piercing method. If PC boards made of hard material are used, the hole dimensions should be larger. The dimensions above should serve as a guideline. Contact JST for details.

HR CONNECTOR

Socket



Circuits	Model No.			Dimensions (mm)		Q'ty / box
	AWG #28 (green)	AWG #26 (natural/white)	AWG #24 (black)	A	B	
2	02HR-8M-P-N	02HR-6S-P-N	02HR-4K-P-N	2.5	7.5	1,000
3	03HR-8M-P-N	03HR-6S-P-N	03HR-4K-P-N	5.0	10.0	1,000
4	04HR-8M-P-N	04HR-6S-P-N	04HR-4K-P-N	7.5	12.5	1,000
5	05HR-8M-P-N	05HR-6S-P-N	05HR-4K-P-N	10.0	15.0	1,000
6	06HR-8M-P-N	06HR-6S-P-N	06HR-4K-P-N	12.5	17.5	1,000
7	07HR-8M-P-N	07HR-6S-P-N	07HR-4K-P-N	15.0	20.0	500
8	08HR-8M-P-N	08HR-6S-P-N	08HR-4K-P-N	17.5	22.5	500
9	09HR-8M-P-N	09HR-6S-P-N	09HR-4K-P-N	20.0	25.0	500
10	10HR-8M-P-N	10HR-6S-P-N	10HR-4K-P-N	22.5	27.5	500
11	11HR-8M-P-N	11HR-6S-P-N	11HR-4K-P-N	25.0	30.0	500
12	12HR-8M-P-N	12HR-6S-P-N	12HR-4K-P-N	27.5	32.5	500
13	13HR-8M-P-N	13HR-6S-P-N	13HR-4K-P-N	30.0	35.0	250
15	—	*15HR-6S-P-N	*15HR-4K-P-N	35.0	40.0	250

Material and Finish

Contact: copper alloy, tin-plated (reflow treatment)
Housing: PA 66, UL94V-0

- Note: 1. Not TÜV approved.
2. *Marked products are not also UL/CSA approved.

<For reference> As the color identification, the following alphabet shall be put in the underlined part. For availability, delivery and minimum order quantity, contact JST.

ex. **02HR-4K-P-N**
standard color AWG#28: M...green, AWG#26: S...natural (white)
AWG#24: K...black
R...red TR...tomato red Y...yellow L...lemon yellow
N...brown E...blue O...orange

Shrouded header

The shrouded headers are interchangeable with those of the EH and HR crimp style connectors.