



Chipsmall Limited consists of a professional team with an average of over 10 year of expertise in the distribution of electronic components. Based in Hongkong, we have already established firm and mutual-benefit business relationships with customers from,Europe,America and south Asia,supplying obsolete and hard-to-find components to meet their specific needs.

With the principle of "Quality Parts,Customers Priority,Honest Operation,and Considerate Service",our business mainly focus on the distribution of electronic components. Line cards we deal with include Microchip,ALPS,ROHM,Xilinx,Pulse,ON,Everlight and Freescale. Main products comprise IC,Modules,Potentiometer,IC Socket,Relay,Connector.Our parts cover such applications as commercial,industrial, and automotives areas.

We are looking forward to setting up business relationship with you and hope to provide you with the best service and solution. Let us make a better world for our industry!



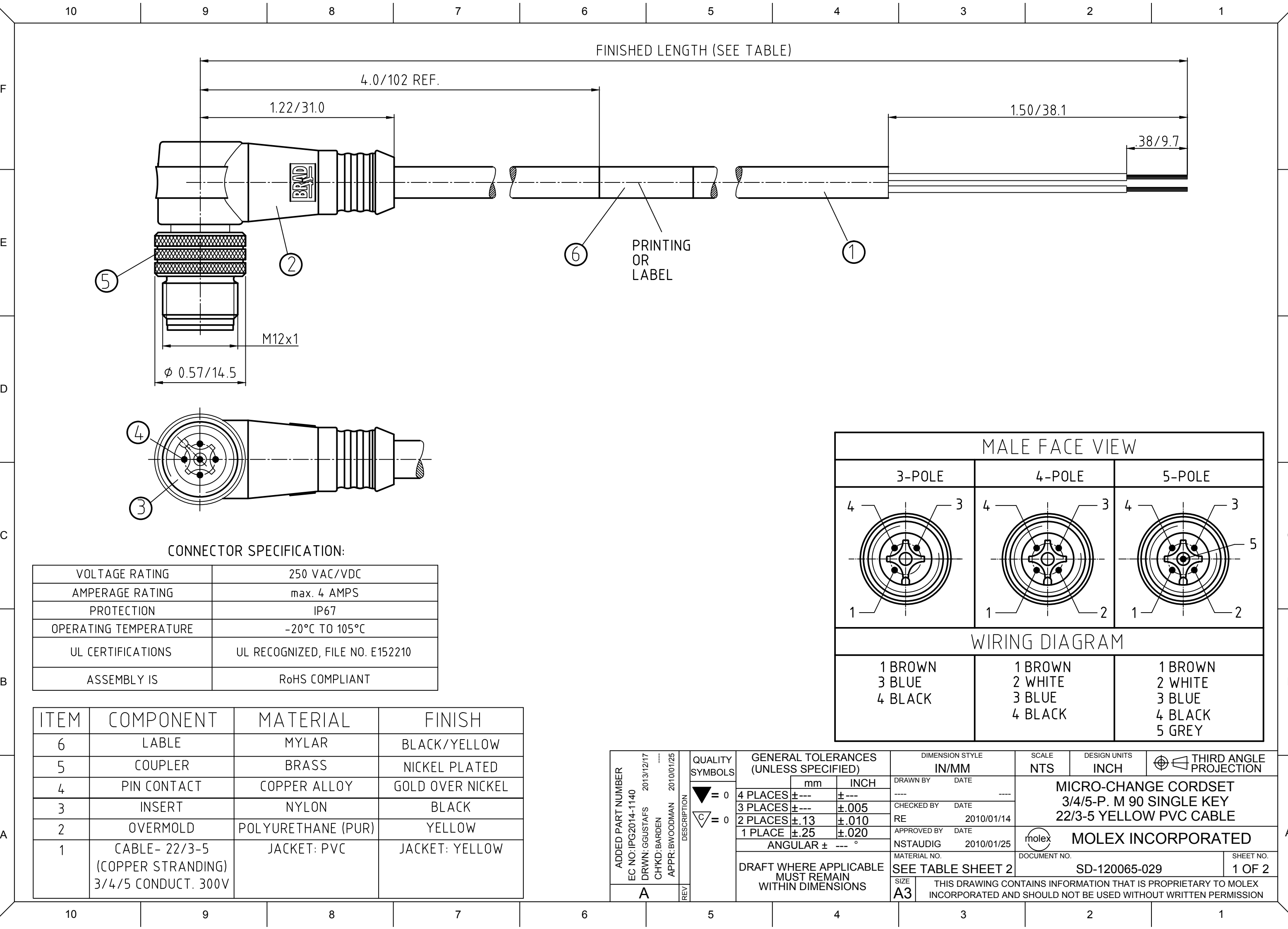
Contact us

Tel: +86-755-8981 8866 Fax: +86-755-8427 6832

Email & Skype: info@chipsmall.com Web: www.chipsmall.com

Address: A1208, Overseas Decoration Building, #122 Zhenhua RD., Futian, Shenzhen, China

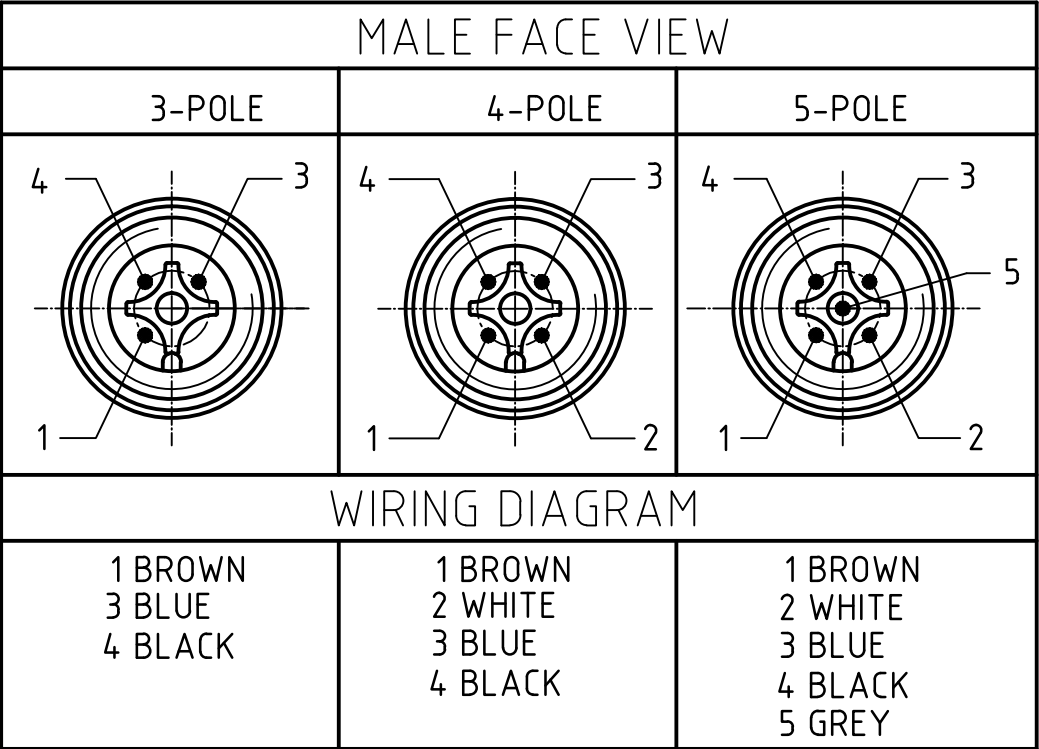


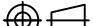


CONNECTOR SPECIFICATION:

VOLTAGE RATING	250 VAC/VDC
AMPERAGE RATING	max. 4 AMPS
PROTECTION	IP67
OPERATING TEMPERATURE	-20°C TO 105°C
UL CERTIFICATIONS	UL RECOGNIZED, FILE NO. E152210
ASSEMBLY IS	RoHS COMPLIANT

ITEM	COMPONENT	MATERIAL	FINISH
6	LABLE	MYLAR	BLACK/YELLOW
5	COUPLER	BRASS	NICKEL PLATED
4	PIN CONTACT	COPPER ALLOY	GOLD OVER NICKEL
3	INSERT	NYLON	BLACK
2	OVERMOLD	POLYURETHANE (PUR)	YELLOW
1	CABLE- 22/3-5 (COPPER STRANDING) 3/4/5 CONDUCT. 300V	JACKET: PVC	JACKET: YELLOW



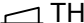



ADDED PART NUMBER EC NO: IPG2014-1140 DRWN: GGUSTAFS 2013/12/17 CHKD: BARDEN APPR: BWOODMAN 2010/01/25 A	QUALITY SYMBOLS = 0 = 0	DESCRIPTION	GENERAL TOLERANCES (UNLESS SPECIFIED)			DIMENSION STYLE IN/MM		SCALE NTS	DESIGN UNITS INCH	 THIRD ANGLE PROJECTION		
			DRAFT WHERE APPLICABLE MUST REMAIN WITHIN DIMENSIONS		mm	INCH	DRAWN BY DATE		MICRO-CHANGE CORDSET 3/4/5-P. M 90 SINGLE KEY 22/3-5 YELLOW PVC CABLE			
				4 PLACES	±---	±---	-----					
				3 PLACES	±---	±.005	CHECKED BY DATE					
				2 PLACES	±.13	±.010	RE 2010/01/14		molex MOLEX INCORPORATED			
				1 PLACE	±.25	±.020	APPROVED BY DATE					
			ANGULAR ± --- °			NSTAUDIG 2010/01/25		DOCUMENT NO.		SHEET NO.		
						SEE TABLE SHEET 2		SD-120065-029		1 OF 2		
						SIZE A3	THIS DRAWING CONTAINS INFORMATION THAT IS PROPRIETARY TO MOLEX INCORPORATED AND SHOULD NOT BE USED WITHOUT WRITTEN PERMISSION					

POL	MATERIAL NUMBER	ENGINEERING NUMBER	FINISHED LENGTH
3	1200651497	803007A09M020	6.56' +3.5" -0 [2.0M +89 -0]
3	1200659208	803007A09M100	32.81' +12.5" -0 [10.0M +318 -0]

POL	MATERIAL NUMBER	ENGINEERING NUMBER	FINISHED LENGTH
4	1200651662	804007A09M020	6.56' +3.5" -0 [2.0M +89 -0]
4	1200651665	804007A09M040	13.12' +6.5" -0 [4.0M +165 -0]
4	1200651666	804007A09M050	16.40' +6.5" -0 [5.0M +165 -0]
4	1200651668	804007A09M060	19.69' +6.5" -0 [6.0M +165 -0]
4	1200651669	804007A09M100	32.81' +12.5" -0 [10.0M +318 -0]

POL	MATERIAL NUMBER	ENGINEERING NUMBER	FINISHED LENGTH
5	1200651724	805007A09M020	6.56' +3.5" -0 [2.0M +89 -0]
5	1200651726	805007A09M040	13.12' +6.5" -0 [4.0M +165 -0]
5	1200651727	805007A09M050	16.40' +6.5" -0 [5.0M +165 -0]
5	1200651728	805007A09M060	19.69' +6.5" -0 [6.0M +165 -0]
5	1200652123	805007A09M100	32.81' +12.5" -0 [10.0M +318 -0]

ADDED PART NUMBER EC NO: IPG2014-1140 DRWN: GGUSTAFS 2013/12/17 CHKD: BARDEN APPR: BWOODMAN 2010/01/25		DESCRIPTION		QUALITY SYMBOLS  = 0  = 0		GENERAL TOLERANCES (UNLESS SPECIFIED)		DIMENSION STYLE IN/MM		SCALE NTS		DESIGN UNITS INCH		 THIRD ANGLE PROJECTION	
						mm INCH		DRAWN BY DATE ---- ----		MICRO-CHANGE CORDSET 3/4/5-P. M 90 SINGLE KEY 22/3-5 YELLOW PVC CABLE					
				4 PLACES ± --- ± --- 3 PLACES ± --- ± .005 2 PLACES ± .13 ± .010 1 PLACE ± .25 ± .020		CHECKED BY DATE RE 2010/01/14									
				ANGULAR ± --- °		APPROVED BY DATE NSTAUDIG 2010/01/25									
				DRAFT WHERE APPLICABLE MUST REMAIN WITHIN DIMENSIONS				MATERIAL NO. SEE TABLE		 MOLEX INCORPORATED		DOCUMENT NO. SD-120065-029		SHEET NO. 2 OF 2	
A		REV		THIS DRAWING CONTAINS INFORMATION THAT IS PROPRIETARY TO MOLEX INCORPORATED AND SHOULD NOT BE USED WITHOUT WRITTEN PERMISSION											