



Chipsmall Limited consists of a professional team with an average of over 10 year of expertise in the distribution of electronic components. Based in Hongkong, we have already established firm and mutual-benefit business relationships with customers from,Europe,America and south Asia,supplying obsolete and hard-to-find components to meet their specific needs.

With the principle of “Quality Parts,Customers Priority,Honest Operation,and Considerate Service”,our business mainly focus on the distribution of electronic components. Line cards we deal with include Microchip,ALPS,ROHM,Xilinx,Pulse,ON,Everlight and Freescale. Main products comprise IC,Modules,Potentiometer,IC Socket,Relay,Connector.Our parts cover such applications as commercial,industrial, and automotives areas.

We are looking forward to setting up business relationship with you and hope to provide you with the best service and solution. Let us make a better world for our industry!



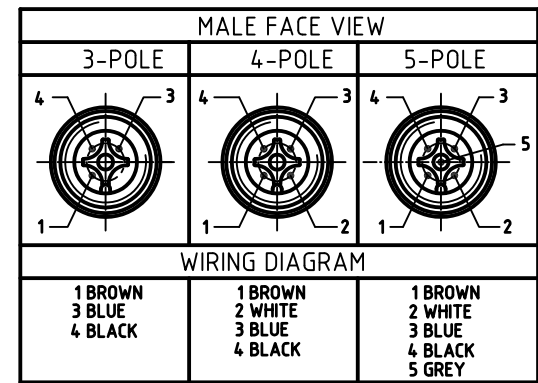
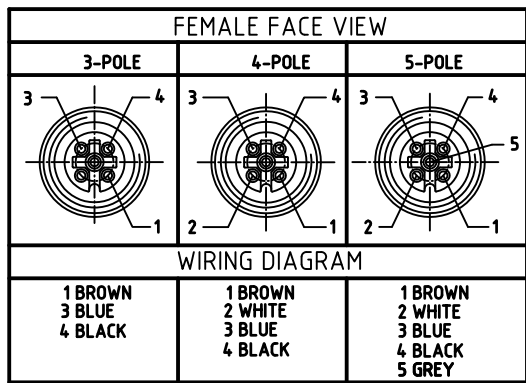
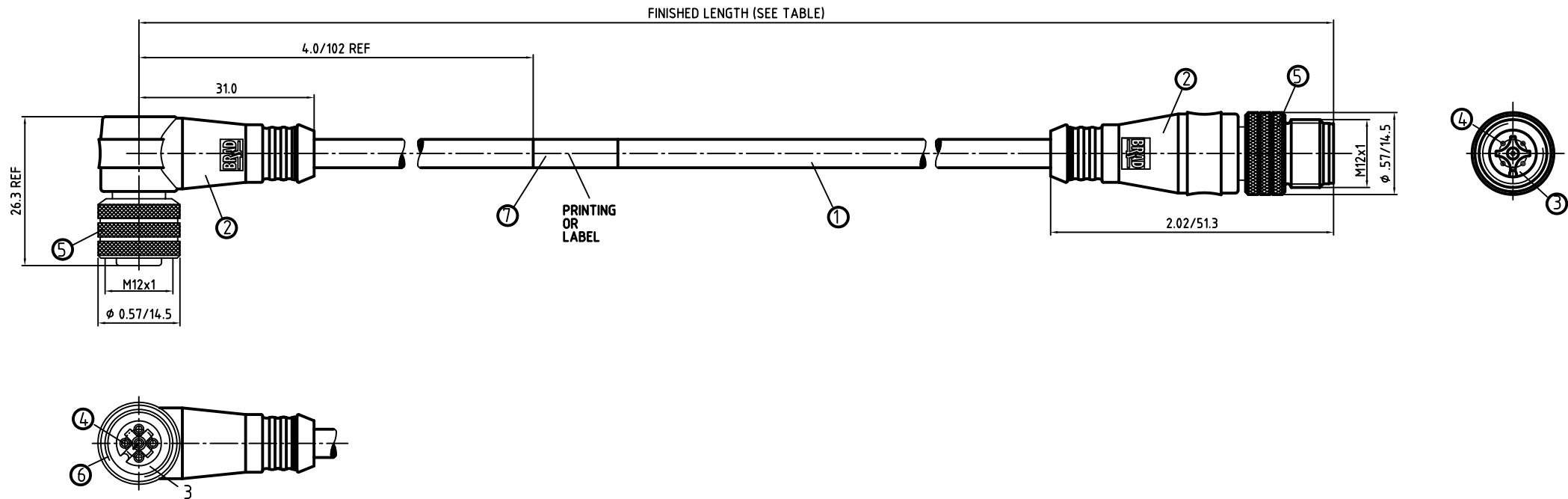
## Contact us

Tel: +86-755-8981 8866 Fax: +86-755-8427 6832

Email & Skype: [info@chipsmall.com](mailto:info@chipsmall.com) Web: [www.chipsmall.com](http://www.chipsmall.com)

Address: A1208, Overseas Decoration Building, #122 Zhenhua RD., Futian, Shenzhen, China



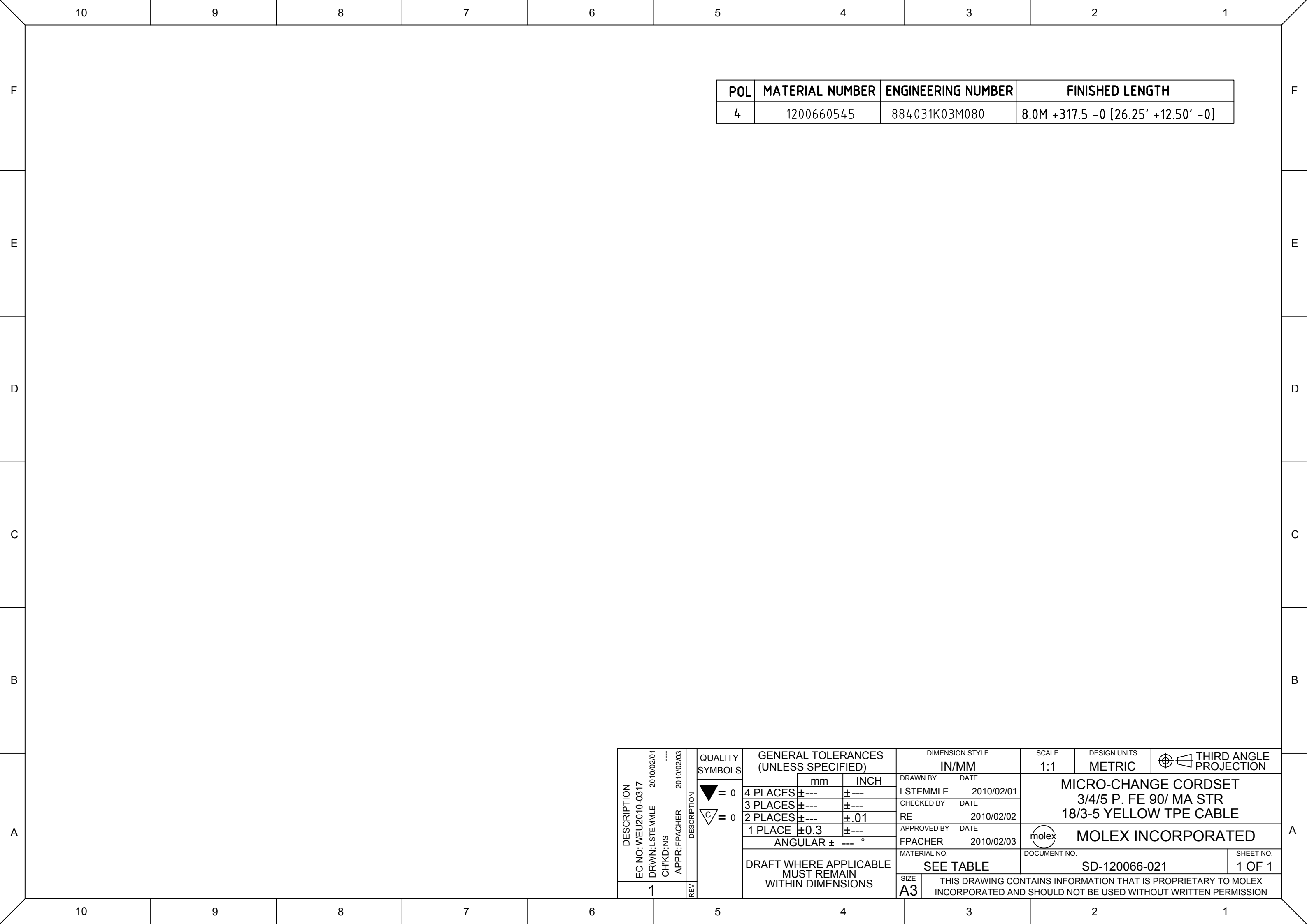


CONNECTOR SPECIFICATION:

VOLTAGE RATING	250 VAC/VDC
AMPERAGE RATING	max. 4 AMPS
PROTECTION	IP67
OPERATING TEMPERATURE	-20°C TO 105°C
ASSEMBLY IS RoHS COMPLIANT	

ITEM	COMPONENT	MATERIAL	FINISH
7	LABLE	MYLAR	BLACK/YELLOW
6	O-RING	VITON	RED
5	COUPLER	BRASS	TEFLON/NICKEL
4	SOCKET/PIN CONTACT	COPPER ALLOY	GOLD OVER NICKEL
3	INSERT	PUR	BLACK
2	OVERMOLD	TPE	YELLOW
1	CABLE- #18/3-5 (COPPER STRANDING) 3/4/5 CONDUCT. 300V	JACKET: TPE	JACKET: YELLOW

DESCRIPTION EC NO: WEU2010-0317 DRWN: LSTEMMLE 2010/02/01 CHKD: NS APPR: FPACHER 2010/02/03	QUALITY SYMBOLS <div>▽ = 0</div> <div>◁ = 0</div>	GENERAL TOLERANCES (UNLESS SPECIFIED)			DIMENSION STYLE IN/MM		SCALE 1:1	DESIGN UNITS METRIC	THIRD ANGLE PROJECTION		
			mm	INCH	DRAWN BY LSTEMMLE	DATE 2010/02/01	MICRO-CHANGE CORDSET 3/4/5 P. FE 90/ MA STR 18/3-5 YELLOW TPE CABLE				
		4 PLACES	±---	±---	CHECKED BY	DATE 2010/02/02					
		3 PLACES	±---	±---	RE		MOLEX INCORPORATED				
		2 PLACES	±---	±.01	APPROVED BY	DATE 2010/02/03					
		1 PLACE	±0.3	±---	FPACHER						
		ANGULAR ± --- °			MATERIAL NO. SEE TABLE SHEET 2		DOCUMENT NO. SD-120066-021		SHEET NO. 1 OF 1		
		DRAFT WHERE APPLICABLE MUST REMAIN WITHIN DIMENSIONS			SIZE A3		THIS DRAWING CONTAINS INFORMATION THAT IS PROPRIETARY TO MOLEX INCORPORATED AND SHOULD NOT BE USED WITHOUT WRITTEN PERMISSION				



POL	MATERIAL NUMBER	ENGINEERING NUMBER	FINISHED LENGTH
4	1200660545	884031K03M080	8.0M +317.5 -0 [26.25' +12.50' -0]

DESCRIPTION EC NO: WEU2010-0317 DRWN: LSTEMMLE CH'KD: NS APPR: FPACHER 2010/02/03	DESCRIPTION REV	QUALITY SYMBOLS <div>▽ = 0</div> <div><div>C</div> = 0</div>	GENERAL TOLERANCES (UNLESS SPECIFIED)			DIMENSION STYLE IN/MM		SCALE 1:1	DESIGN UNITS METRIC	THIRD ANGLE PROJECTION		
				mm	INCH	DRAWN BY LSTEMMLE	DATE 2010/02/01	MICRO-CHANGE CORDSET 3/4/5 P. FE 90/ MA STR 18/3-5 YELLOW TPE CABLE				
			4 PLACES	±---	±---	CHECKED BY RE	DATE 2010/02/02					
			3 PLACES	±---	±---	APPROVED BY FPACHER		DATE 2010/02/03		MOLEX INCORPORATED		
			2 PLACES	±---	±.01							
			1 PLACE	±0.3	±---	MATERIAL NO. SEE TABLE		DOCUMENT NO. SD-120066-021				SHEET NO. 1 OF 1
			ANGULAR ± --- °									
			DRAFT WHERE APPLICABLE MUST REMAIN WITHIN DIMENSIONS			SIZE A3	THIS DRAWING CONTAINS INFORMATION THAT IS PROPRIETARY TO MOLEX INCORPORATED AND SHOULD NOT BE USED WITHOUT WRITTEN PERMISSION					